

Quilting Diagram

# ZIG ZAG SIZE CHART

MATERIALS	CRIB 38" × 38"	QUEEN 89" × 106"
BLOCKS	4	30
TEAL PRINT	$\frac{3}{8}$ yard	2 yards
PURPLE PRINT	1 fat quarter	1 yard
GREEN PRINT	1 fat quarter	1 yard
GRAY SOLID	1 $\frac{3}{4}$ yards	6 $\frac{3}{4}$ yards
BACKING FABRIC	1 $\frac{1}{4}$ yards	8 $\frac{1}{4}$ yards
BATTING	Crib-size	Queen-size

## CRIB-SIZE CUTTING

### FROM TEAL PRINT, CUT:

- 3 ( $\frac{3}{8}$ "-wide) strips. From strips, cut 24 ( $\frac{3}{8}$ ") squares. Cut squares in half diagonally to make 48 half-square C triangles.

### FROM GREEN PRINT FAT QUARTER, CUT:

- 2 ( $\frac{5}{2}$ "-wide) strips. From strips, cut 4 ( $\frac{5}{2}$ ") squares. Cut squares in half diagonally in both directions to make 16 quarter-square F triangles.

### FROM PURPLE PRINT FAT QUARTER, CUT:

- 1 ( $\frac{3}{2}$ "-wide) strips. From strips, cut 4 ( $\frac{3}{2}$ ") A squares.
- 3 ( $\frac{2}{2}$ "-wide) strips. From strips, cut 16 ( $\frac{2}{2}$ ") E squares.

### FROM GRAY SOLID, CUT:

- 2 ( $\frac{7}{4}$ "-wide) strips. From strips cut 8 ( $\frac{7}{4}$ ") squares. Cut squares in half diagonally to make 16 half-square D triangles.

- 3 ( $\frac{3}{8}$ "-wide) strips. From strips, cut 24 ( $\frac{3}{8}$ ") squares. Cut squares in half diagonally to make 48 half-square C triangles.
- 3 ( $\frac{3}{2}$ "-wide) strips. From strips, cut 8 ( $\frac{3}{2}$ " ×  $\frac{9}{2}$ ") B rectangles and 8 ( $\frac{3}{2}$ ") A squares.
- 4 ( $\frac{2}{2}$ "-wide) strips. From strips, cut 2 ( $\frac{2}{2}$ " ×  $\frac{34}{2}$ ") side borders and 2 ( $\frac{2}{2}$ " ×  $\frac{38}{2}$ ") top and bottom borders.
- 5 ( $\frac{2}{4}$ "-wide) strips for binding.

## QUEEN-SIZE CUTTING

### FROM TEAL PRINT, CUT:

- 18 ( $\frac{3}{8}$ "-wide) strips. From strips, cut 180 ( $\frac{3}{8}$ ") squares. Cut squares in half diagonally to make 360 half-square C triangles.

### FROM GREEN PRINT, CUT:

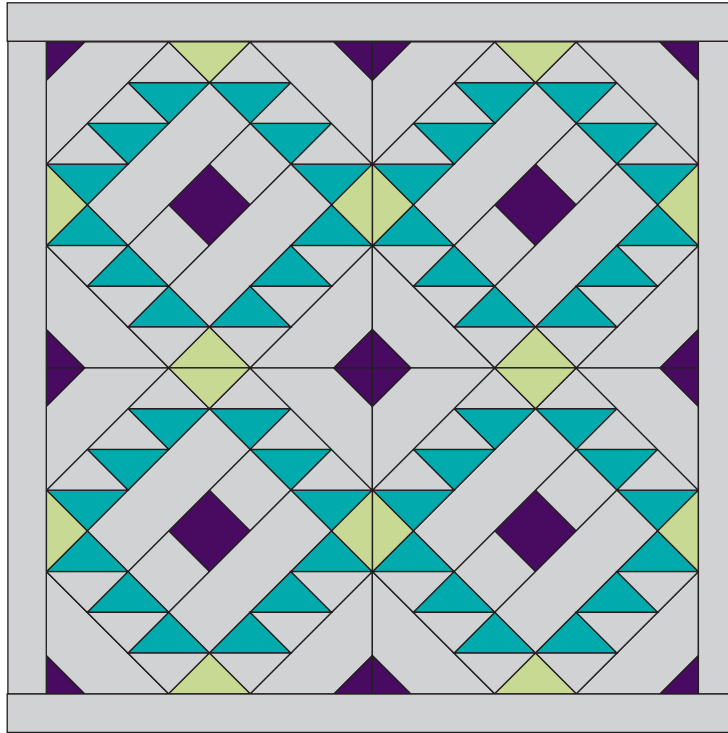
- 5 ( $\frac{5}{2}$ "-wide) strips. From strips, cut 30 ( $\frac{5}{2}$ ") squares. Cut squares in half diagonally in both directions to make 120 quarter-square F triangles.

### FROM PURPLE PRINT, CUT:

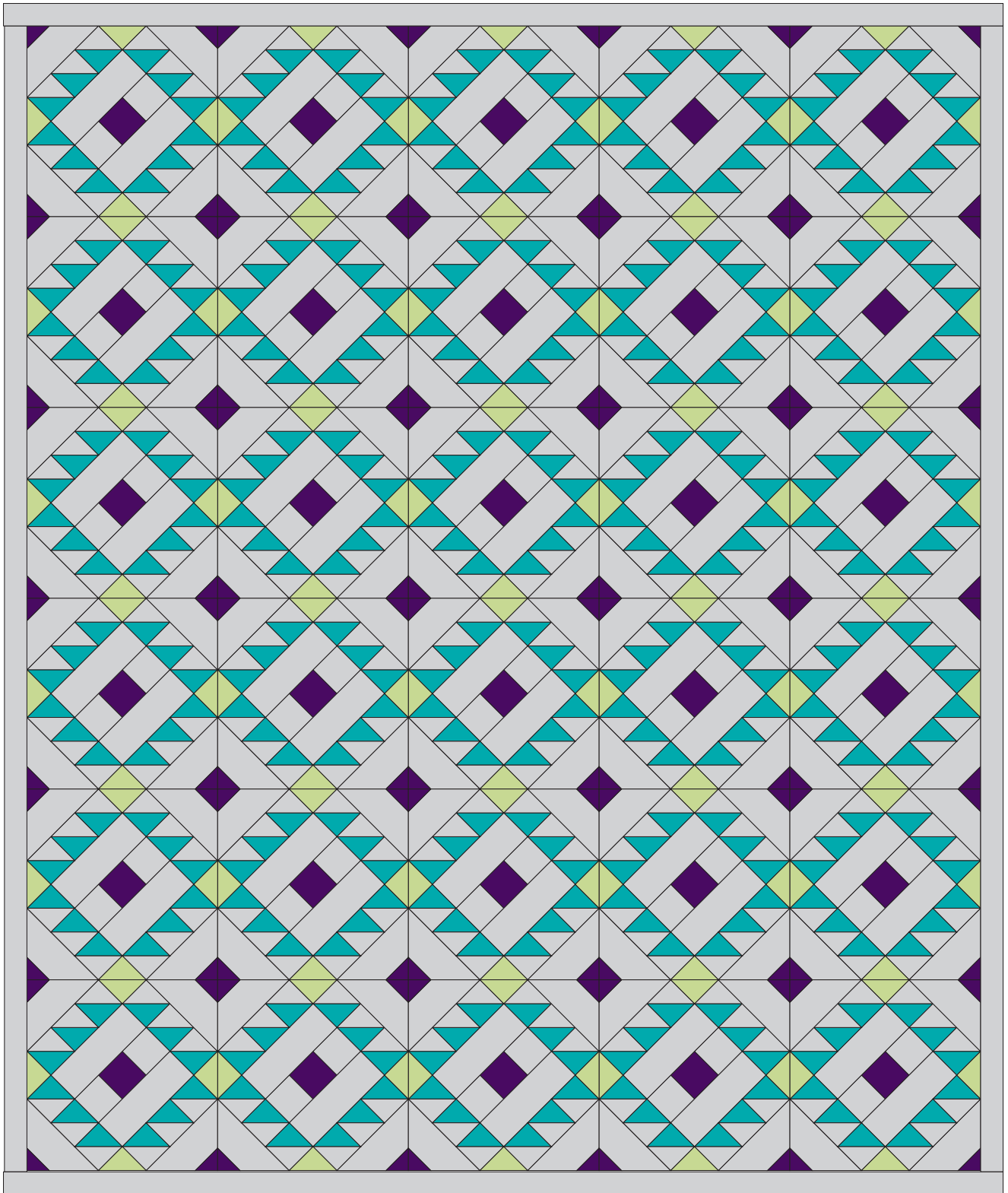
- 3 ( $\frac{3}{2}$ "-wide) strips. From strips, cut 30 ( $\frac{3}{2}$ ") A squares.
- 8 ( $\frac{2}{2}$ "-wide) strips. From strips, cut 120 ( $\frac{2}{2}$ ") E squares.

### FROM GRAY SOLID, CUT:

- 6 ( $\frac{7}{4}$ "-wide) strips. From strips cut 30 ( $\frac{7}{4}$ ") squares. Cut squares in half diagonally to make 120 half-square D triangles.
- 18 ( $\frac{3}{8}$ "-wide) strips. From strips, cut 180 ( $\frac{3}{8}$ ") squares. Cut squares in half diagonally to make 360 half-square C triangles.
- 21 ( $\frac{3}{2}$ "-wide) strips. From strips cut 60 ( $\frac{3}{2}$ " ×  $\frac{9}{2}$ ") B rectangles and 60 ( $\frac{3}{2}$ ") A squares.
- 10 ( $\frac{2}{2}$ "-wide) strips. Piece strips to make 2 ( $\frac{2}{2}$ " ×  $\frac{102}{2}$ ") side borders and 2 ( $\frac{2}{2}$ " ×  $\frac{89}{2}$ ") top and bottom borders.
- 11 ( $\frac{2}{4}$ "-wide) strips for binding.



Crib Quilt Top Assembly Diagram



Quilt Top Assembly Diagram