

FINISHED SIZE: **FINISHED BLOCK:**

42½" × 51"

30 (8½") blocks

Who's Ready for Summer?

This whimsical quilt is a hoot to make! The simple shapes are fused and machine appliquéd for quick and easy sewing. Who knew you could make such a cute coordinating pillow to go with your owl quilt? It's fast and fun to make!

quilt by **DIANE KRON**

MATERIALS

NOTE: Fabrics in the quilt shown are from Riley Blake and Hoffman.

1⅛ yards pink dot for background squares

1⅛ yards blue print #2 for background squares

¾ yard brown print for owls

¾ yard brown dot #1 for owls

½ yard brown dot #2 for binding

1 fat quarter* blue print #1 for wings

1 fat quarter* pink print for wings

10" square yellow print for beaks

10" square green print for beaks

12" square white print for eyes

10" square black solid for pupils

Paper-backed fusible web

3 yards backing fabric

Twin-size quilt batting

*fat quarter = 18" × 20"

CUTTING

Measurements include ¼" seam allowances. Patterns for appliquéd pieces are on page 7. Follow manufacturer's instructions for using fusible web.

FROM PINK DOT, CUT:

- 4 (9"-wide) strips. From strips, cut 15 (9") background squares.

FROM BLUE PRINT #2, CUT:

- 4 (9"-wide) strips. From strips, cut 15 (9") background squares.

FROM BROWN PRINT, CUT:

- 15 Owls.

FROM BROWN DOT #1, CUT:

- 15 Owls.

FROM BROWN DOT #2, CUT:

- 5 (2¼"-wide) strips for binding.

FROM BLUE PRINT #1, CUT:

- 15 Wings.
- 15 Wings reversed.

FROM PINK PRINT FAT QUARTER, CUT:

- 15 Wings.
- 15 Wings reversed.

FROM YELLOW PRINT, CUT:

- 15 Beaks.

FROM GREEN PRINT, CUT:

- 15 Beaks.

FROM WHITE PRINT, CUT:

- 60 Eyes.

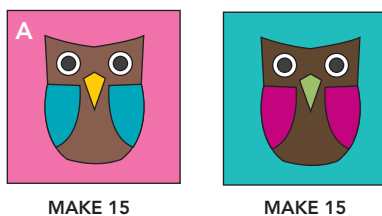
FROM BLACK SOLID, CUT:

- 60 Pupils.



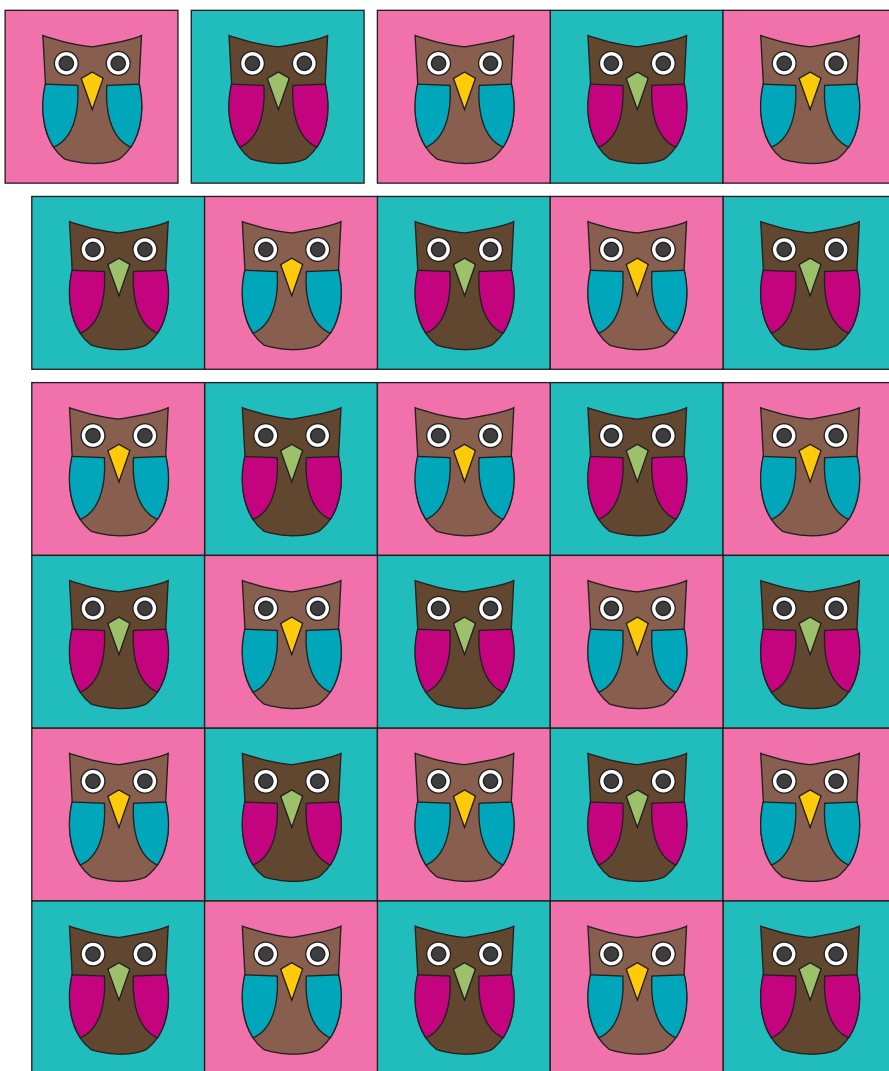
BLOCK ASSEMBLY

1. Arrange 1 set of appliqué pieces on 1 pink background square as shown in *Block Diagrams*, centering owl. Fuse pieces in place.



Block Diagrams

2. Machine appliqué using blanket stitch and white thread. Stitch a star pattern on the pupils using invisible thread. Make 15 blocks using pink background squares and 15 blocks using blue print #2 background squares.



Quilt Top Assembly Diagram

QUILT ASSEMBLY

1. Lay out blocks as shown in *Quilt Top Assembly Diagram*.
2. Join into rows; join rows to complete quilt top.

FINISHING

1. Divide backing into 2 (1½-yard) lengths. Cut 1 piece in half lengthwise to make 2 narrow panels. Join 1 narrow panel to wider panel. Remaining narrow panel is extra.
2. Layer backing, batting, and quilt top; baste. Quilt as desired. Quilt shown was quilted with allover meandering (*Quilting Diagram*).
3. Join 2¼"-wide brown dot #2 strips into 1 continuous piece for straight-grain French-fold binding. Add binding to quilt. ◀



Quilting Diagram



Owl Pillow

FINISHED SIZE: 12" × 22½"

MATERIALS

NOTE: Fabrics in the quilt shown are from Riley Blake and Hoffman.

½ yard brown solid for sashing strips and backing

1 fat quarter* blue solid for background square and wings

1 fat quarter* pink solid for background square and wings

4" square yellow solid for beaks

5" square white solid for eyes

4" square black solid for pupils

8" square tan solid for owl

Paper-backed fusible web

½ yard lining fabric

16" × 26" rectangle of quilt batting

12" × 22" pillow form

*fat quarter = 18" × 20"



CUTTING

Measurements include ¼" seam allowances. Patterns for appliqué pieces are on page 7. follow manufacturer's instructions for using fusible web.

FROM BROWN SOLID, CUT:

- 1 (12½"-wide) strip. From strip, cut 2 (12½" × 28") backing rectangles. From remainder of strip, cut 1 Owl.
- 3 (2"-wide) strips. From strips, cut 2 (2" × 23") B rectangles and 3 (2" × 9½") C rectangles.

FROM BLUE SOLID, CUT:

- 1 (9½"-wide) strip. From strip, cut 1 (9½") A square.
- 1 Wing.
- 1 Wing reversed.

FROM PINK SOLID, CUT:

- 1 (9½"-wide) strip. From strip, cut 1 (9½") A square. From remainder of strip, cut 1 Wing and 1 Wing reversed.

FROM YELLOW SOLID, CUT:

- 2 Beaks.

FROM WHITE SOLID, CUT:

- 4 Eyes.

FROM BLACK SOLID, CUT:

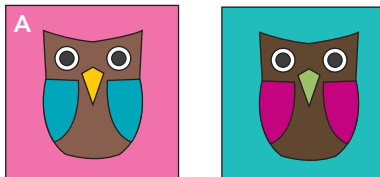
- 4 Pupils.

FROM TAN SOLID, CUT:

- 1 Owl.

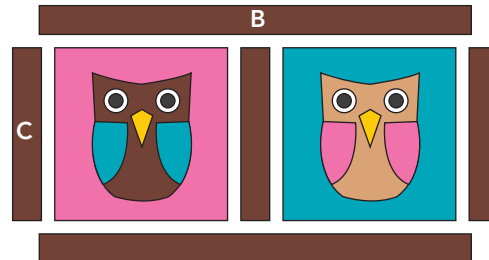
PILLOW ASSEMBLY

1. Arrange 1 set of appliqué pieces on pink A square, centering owl as shown in *Block Diagrams*. Fuse pieces in place.

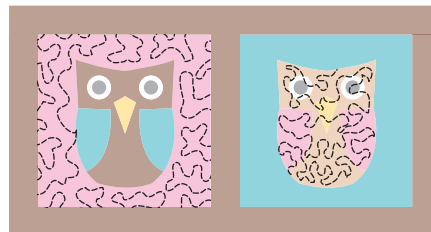


Block Diagrams

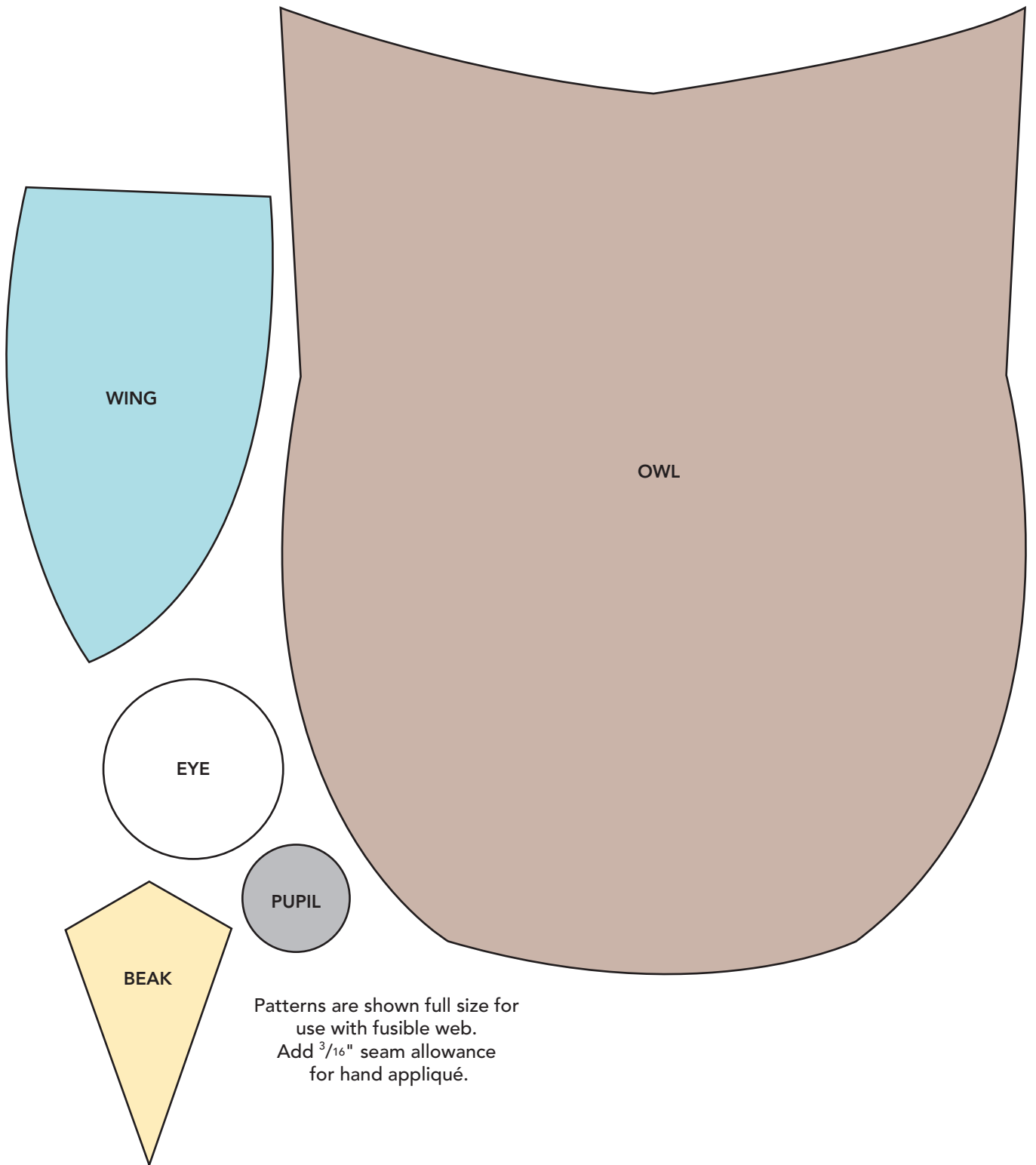
2. Machine appliqué pieces using blanket stitch and white thread.
3. In the same manner, make 1 blue block.
4. Lay out blocks, brown B rectangles, and brown C rectangles as shown in *Pillow Top Assembly Diagram*. Join to complete pillow top.
5. Layer lining, batting, and pillow top; baste. Quilt as desired. Pillow top shown was quilted with all-over meandering in the pink background square and tan owl using variegated thread (*Quilting Diagram*).
6. Refer to *Sew Easy: Pillow Finishing: Without Binding* on page 8 to complete your pillow. ◀



Pillow Top Assembly Diagram



Quilting Diagram



Patterns are shown full size for use with fusible web. Add $\frac{3}{16}$ " seam allowance for hand appliqué.



Pillow Finishing

Use this quick and easy method to finish your throw pillow.

1. Cut backing the same height as finished pillow plus $\frac{1}{2}$ " for seam allowances \times width of finished pillow plus 6". For example, for a 12" \times 22" finished pillow, cut 2 rectangles each $12\frac{1}{2}$ " \times 28".
2. Fold backing rectangles in half crosswise, wrong sides facing; press.
3. Overlap pressed edges, making a square the same size as pillow top. Baste overlapped edges together (*Diagram A*).

FOR PILLOW WITHOUT BINDING

4. Place pillow top atop backing, right sides facing. Stitch around outer edge (*Diagram B*).

SEW SMART™

If desired, slightly round the corners when stitching to avoid sharp points on the finished pillow.

—Liz

5. Turn right side out through opening in pillow back. Insert pillow form into pillow cover.

FOR PILLOW WITH BINDING

4. Place pillow top atop backing, wrong sides facing. Baste around pillow top $\frac{1}{8}$ " from outer edge.
5. Join $2\frac{1}{4}$ "-wide binding strips into 1 continuous piece for straight-grain French-fold binding. Add binding to pillow cover. Insert pillow form into pillow cover.

