

Web Bonus: Whiskey & Old Lace

Designed by
NANCY MAHONEY

Made and Machine Quilted by ELIZABETH ALLOCCO

SKILL LEVEL
INTERMEDIATE

Finished Quilt Size
62½" x 62½"

Number of Blocks and Finished Size
25 Country Lanes Variation Blocks 9" x 9"

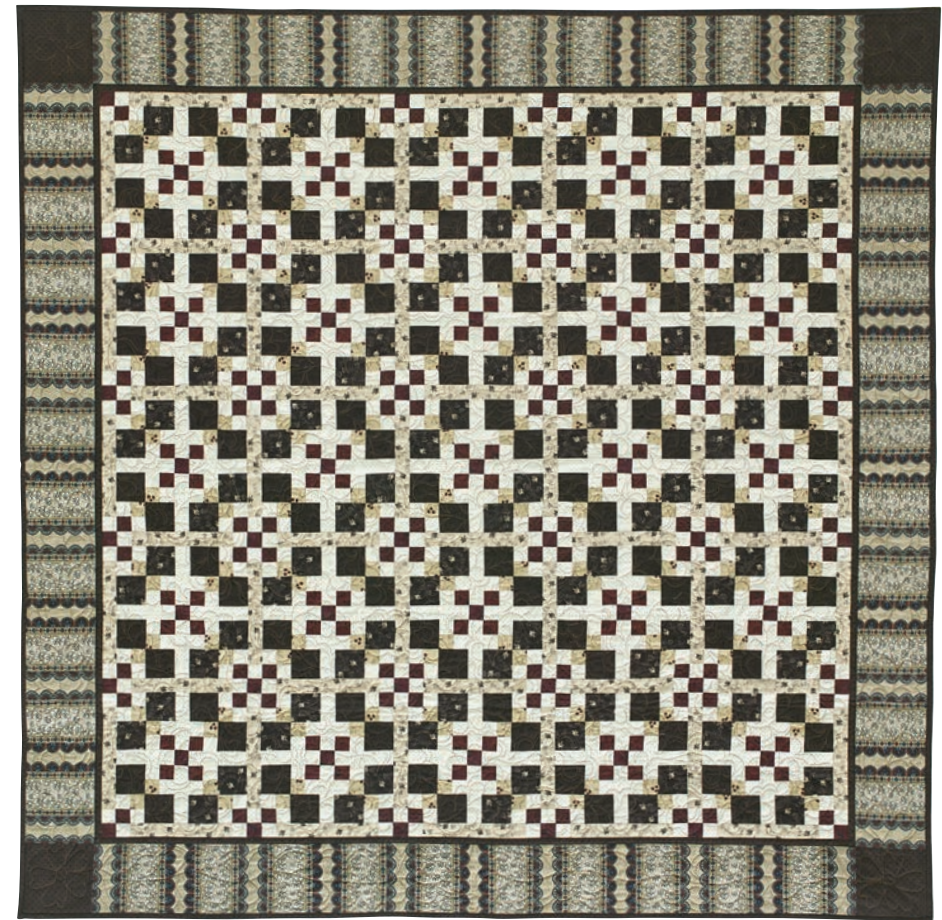
Planning

Traditional prints from the Haversack collection by Audrey Wright for RJR Fabrics give this quilt a timeless quality. The 3 similar red, 3 similar brown, and 2 similar tan prints add depth and interest. Strip piecing makes quick work of the blocks and pieced sashing, and the border stripe is the perfect finishing touch. Be sure to use an accurate ¼" seam allowance so all elements of the quilt fit together well.

Tan border stripe strips are fussy-cut in both directions. When cutting the six 5½" x WOF strips, center the strips on groups of 5 light-colored scallops. Sew ends of WOF strips together so the stripe repeat matches. For help with this process, visit McCallsQuilting.com and click on Videos>Special Techniques>Aligning Stripes End to End. Once the WOF strips are pieced together, cut 4 strips 52½" long centering each on a dark-scallops stripe.

Fabric Requirements

Red basket weave print (block corner squares)	¼ yd.
Cream small print (blocks, pieced sashing strips)	1¾ yds.
Tan/red small floral (blocks)	½ yd.



Red small floral check (blocks)	¼ yd.
Tan/brown vine print (pieced sashing)	¾ yd.
Brown small floral check and brown/tan vine print (blocks)	⅝ yd. each
Red zigzag print (block centers, sashing posts)	¼ yd.
Brown basket weave print (inner border, outer border corners, binding)	1 yd.
Tan border stripe (outer border)	1½ yds.
Backing	4⅛ yds.
Batting size	72" x 72"

Cutting Instructions

(cut in order listed)

Red basket weave print and red small floral check—cut from each:

4 strips 1½" x width of fabric (WOF)
Cream small print

22 strips 1½" x WOF
100 strips 1½" x 4½"

Tan/red small floral
8 strips 1½" x WOF

Tan/brown vine print
3 strips 7½" x WOF

Brown small floral check and brown/tan vine print—cut from each:

100 squares 2½" x 2½"

Red zigzag print

61 squares 1½" x 1½"

- Brown basket weave print
- 7 strips $2\frac{1}{2}$ " x WOF (binding)
- *2 strips 1 " x $52\frac{1}{2}$ ", pieced from 3 WOF strips
- *2 strips 1 " x $51\frac{1}{2}$ ", pieced from 3 WOF strips
- 4 squares $5\frac{1}{2}$ " x $5\frac{1}{2}$ "

Tan border stripe

- **4 strips $5\frac{1}{2}$ " x $52\frac{1}{2}$ ", pieced from 6 WOF strips
- *Border strips are cut to exact length.
- **Border strips are cut to exact length; see Planning.

Piecing the Blocks and Sashing Strips

1 Referring to **Diagram I**, sew together 1 each red basket weave and cream small print WOF strips to make strip set. Make 4. Press in direction of arrow. Cut into 100 segments $1\frac{1}{2}$ " wide. In similar manner, make remaining strip sets in fabric arrangements and quantities shown. Press, and cut segments shown. Set aside the 60 long segments for sashing.

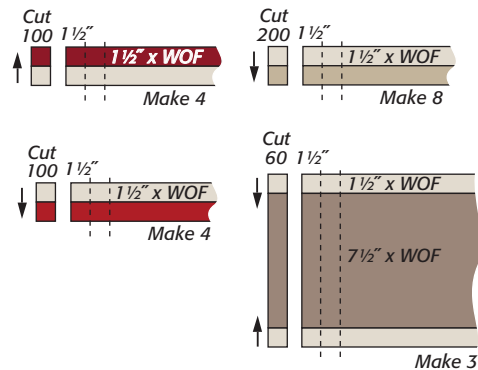


Diagram I

2 Sew together 1 each red basket weave and tan/red small floral segments to make 4-patch (**Diagram II-A**). Make 100. Sew together 1 each tan/red small floral and red small floral check segments to make 4-patch (**Diagram II-B**). Make 100.



Diagram II-A



Diagram II-B

3 Referring to **Diagram III-A** and watching placement and orientation, sew 2 rows using one 4-patch of each fabric combination plus 2 brown small floral check $2\frac{1}{2}$ " squares. Sew rows together to make pieced square. Make 50. In similar manner, make 50 using brown/tan vine print $2\frac{1}{2}$ " squares (**Diagram III-B**).



Diagram III-A



Diagram III-B

4 Stitch 3 rows using 2 pieced squares of each arrangement, 4 cream $4\frac{1}{2}$ " strips, and 1 red zigzag print $1\frac{1}{2}$ " square (**Diagram IV**). Stitch rows together to make Country Lanes Variation Block. Make 25.

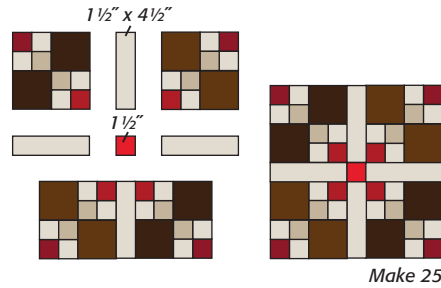


Diagram IV

Assembling the Quilt Top

Note: Refer to **Assembly Diagram** for following steps.

5 Sew 6 sashing rows of 6 red zigzag print $1\frac{1}{2}$ " squares and 5 pieced sashing strips (set aside in Step 1) each, alternating. Sew 5 block rows of 6 sashing strips and 5 blocks each, alternating. Sew rows together, alternating.

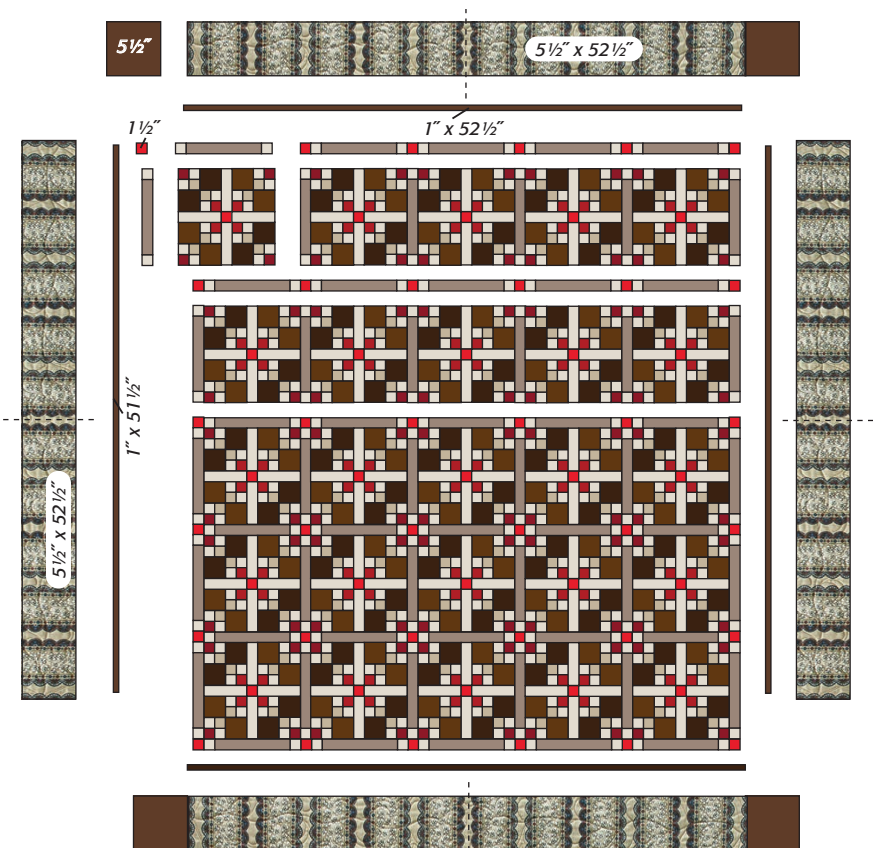
6 Stitch brown basket weave print $51\frac{1}{2}$ " strips to sides. Stitch basket weave $52\frac{1}{2}$ " strips to top/bottom. Sew tan border stripe fussy-cut $52\frac{1}{2}$ " strips to sides. Stitch basket weave $5\frac{1}{2}$ " squares to ends of remaining border stripe strips; sew to top/bottom.

Quilting and Finishing

7 Layer, baste, and quilt. Elizabeth machine quilted an allover leaf design in the quilt center. Outer border corner squares each feature a flower motif, and outer border strips are filled with leafy vines. Bind with brown basket weave print.

Designer Information

See more quilt designs by Nancy Mahoney on her website, nancymahoney.com.



Assembly Diagram