



pattern  easy

Pillow Shams



Made by Carolyn Beam. Fabric: Coventry Court by Lunn Studios and Studio RK for Robert Kaufman. Batting: The Warm Company. Thread: Quilter's Choice. Quilted on a Gammill Statler Stitcher Optimum. Location: American Furniture Warehouse, Centennial, CO, atwonline.com.

Be the first to see what's new at Quiltmaker. Subscribe at quiltmaker.com or by calling 800-388-7023 or 386-597-4387.
Copyright © 2012 Creative Crafts Group, LLC. All rights reserved.

Quiltmaker
The Quilts You Want to Make—We Show You How

Copyright © 2012 Creative Crafts Group, LLC.
All rights reserved. quiltmaker.com

materials

King pillow sham: 26" x 42"

For two pillow shams:

Cream Print

1³/₈ yards for pillow center

Dark Blue Tone-on-Tone

³/₈ yard for folded border #1

Brown Floral Print

1 yard for border #2

Backing 2³/₄ yards

cutting

Cream Print

2 rectangles (A) 20¹/₂" x 36¹/₂"

Dark Blue Tone-on-Tone

for border #1

4 strips 1" x 36¹/₂" for top/bottom

4 strips 1" x 20¹/₂" for sides

Brown Floral Print

for border #2

4 strips 3¹/₂" x 36¹/₂" for top/bottom

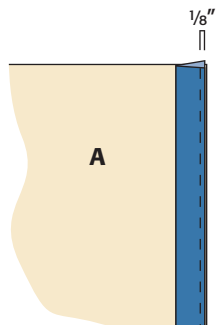
4 strips 3¹/₂" x 26¹/₂" for sides

Backing

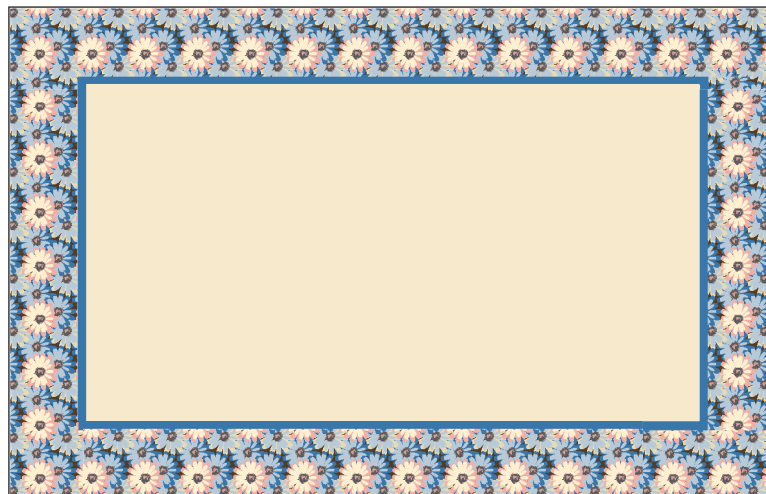
4 rectangles (B) 22¹/₂" x 26¹/₂"

1 Making the Top

Fold each dark blue border strip in half lengthwise, wrong sides together. Matching raw edges, baste the border #1 top and bottom strips to A ¹/₈" from the edges. Repeat with the border #1 side strips.

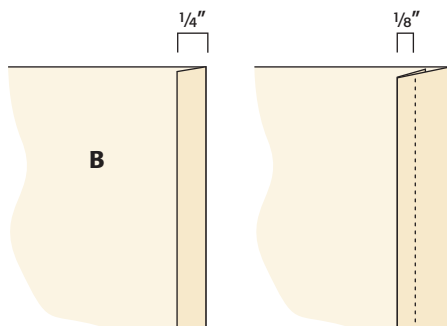


Matching centers and ends, sew the border #2 top and bottom strips to the pillow sham. Add the border #2 side strips in the same way.



2 Finishing the Pillow Sham

Fold under one short edge of a backing rectangle ¹/₄" and press. Fold under ¹/₄" again and press. Topstitch ¹/₈" from the folded edge. Repeat with the other backing rectangle.



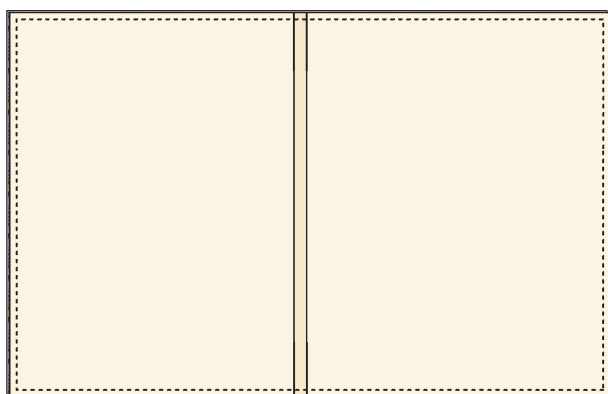
Be the first to see what's new at Quiltmaker. Subscribe at quiltmaker.com or by calling 800-388-7023 or 386-597-4387. Copyright © 2012 Creative Crafts Group, LLC. All rights reserved.

Quiltmaker
The Quilts You Want to Make—We Show You How

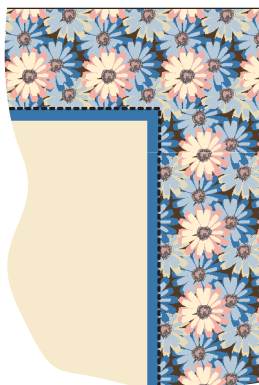
Copyright © 2012 Creative Crafts Group, LLC.
All rights reserved. quiltmaker.com

Matching raw edges, position one backing rectangle on the pillow sham front, right sides together. Pin in place. Repeat with the other backing rectangle on the other end of the pillow sham. The folded edges in the center will overlap.

Sew around all of the edges with a $\frac{1}{4}$ " seam allowance. Turn the pillow sham right sides out through the center opening and press.



To create the flange, stitch around the pillow sham, through all layers, between border #1 and border #2.



Repeat to make 2 pillow shams. 