

Pinwheel Present Pocket

by Julie Creus

Sponsored by Bernina of America



Materials

Makes 1 Pinwheel Present Pocket
Finished size 4" x 4"

- Template (provided)
- Template plastic or cardboard
- Outer fabric: 1 fat quarter
- Inner fabric: 1 fat quarter
- Label fabric: Scrap 3½" x 3½" light-colored solid fabric
- Heavyweight paper-backed fusible web, 4" x 4" (I use HeatnBond® Ultrahold by Thermo O Web.)
- Double-sided fusible stiff interfacing (I use Bosal Craf-tex Plus Double-sided Fusible Non-woven Heavyweight, style 437, or C&T's fast2fuse® Medium.)
- Glue stick
- Topstitching thread in a coordinating color
- Disappearing ink marking pen
- Fine point permanent marker
- Pinking shears
- Seam sealant (I use Fray Check™.)
- Nonstick pressing sheet (I use C&T's Silicone Release Paper.)
- Turning tool

Are you a fan of *Furoshiki*, the Japanese art of enveloping gifts in reusable fabric wrapping? I sure am! These Pinwheel Present Pockets are a mod interpretation of this concept. They are the perfect, personal finishing touch for small gifts such as gift cards, jewelry, small photos, even love notes! Quick to make in multiples, they are reusable, which is good for our environment. Plus, the pinwheel shapes are just so fun to fold!

INSTRUCTIONS

1. Trace and cut the templates from template plastic or cardboard. You will need 1 template of the entire shape ("box outline marking template") plus 1 template for the interfacing base and 1 template for the interfacing flaps.
2. Pin the outer and inner box fabrics right sides together. Trace the entire shape template on the wrong side of 1 of the fabrics. Place additional pins around the shape to secure the fabrics for sewing. (Figure 1)
3. Sew all the way around the perimeter of the shape, directly on the drawn line, before cutting.


Process photos by Julie Creus



Figure 1

4. Trim the seam allowance to ¼" with pinking shears. With regular scissors, clip into the inner corners to within a few threads of the stitching. Reinforce the inner corners with a drop of seam sealant and let it dry.
5. Pinch to separate the fabric layers. Cut a 2" turning slit in the center of the inner fabric layer. Do not turn it right side out yet. Turn the unit over so the outer fabric side is facing up.

Tip: Cut the slit on the diagonal to limit fraying.

6. Use the 2 interfacing templates to trace 1 square base and 4 half-moon flaps on the paper side of the fusible interfacing. Cut out the interfacing pieces and remove the paper backing from 1 side. Use a glue stick to tack each interfacing shape, fusible side down, to the corresponding spaces on the outer fabric side. (*Figure 2*) There should be approximately $\frac{1}{8}$ " margin between the interfacing shapes and the stitching. (This small margin will make it easier to fold the box.)
7. Place the unit, interfacing side down, onto a nonstick pressing sheet. Press with a hot steam iron. Let cool. Remove the paper backing from the interfacing.
8. Carefully turn the form right side out. Take your time! Use a turning tool to push out the curves. (*Figure 3*) Finger press to shape the unit. Press both sides with a hot iron.
9. Fuse paper-backed fusible web to the wrong side of the label fabric. Draw a $2\frac{1}{2}$ " x $2\frac{1}{2}$ " square on the paper side of the assembly and cut it out. Use pinking shears or a wavy rotary cutter blade to add visual interest.
10. Write a message on the label with a fine-tipped permanent marker. Peel off the paper and fuse the label onto the fabric, covering the turning slit on the interior of the gift box.
11. Topstitch $\frac{1}{8}$ " around the perimeter of the entire shape.
12. To assemble, place the gift on top of the label. Fold the sides in, 1 at a time, tucking the last flap under the first. 

latodera.com



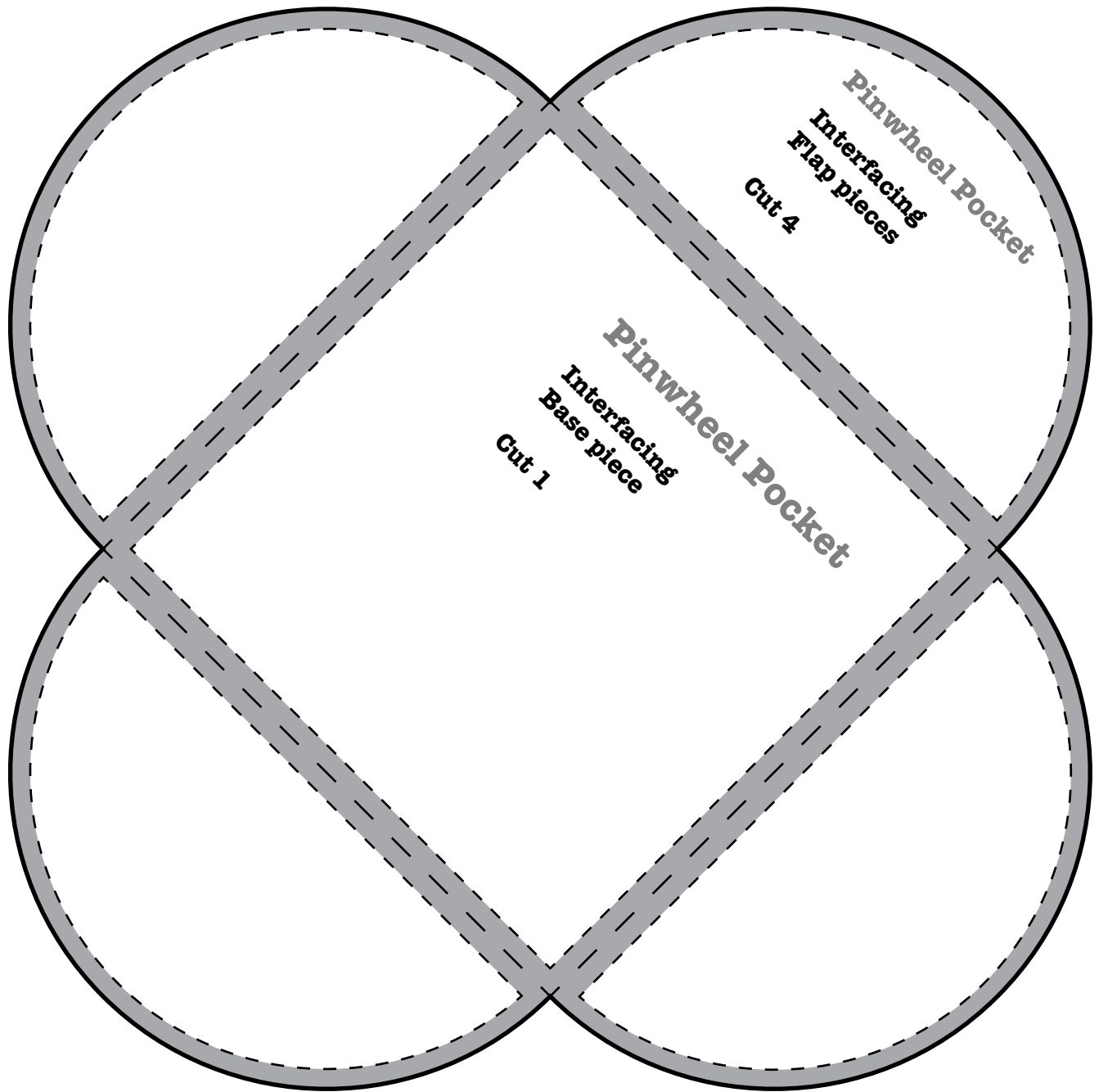
Figure 2



Figure 3



Pinwheel Present Pocket Templates



↑
Box Outline
Marking template