

# Picnic Grove Web Bonus: Queen Size

Adapted from a Quilt Designed by  
HOLLY HOLDERMAN

**SKILL LEVEL**  
**INTERMEDIATE**

**Finished Quilt Size**  
90½" x 90½"

**Number of Blocks and Finished Size**  
41 Snowball Blocks 8" x 8"  
40 Gingham Blocks 8" x 8"

## Planning

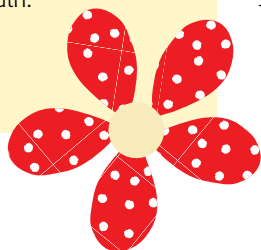
Sweet florals, polka dots, and plaids from the Pam Kitty Picnic collection by LakeHouse Dry Goods give this quilt its feminine charm. Be sure to use an accurate ¼" seam allowance throughout construction so blocks fit together well.



The Picnic Grove lap quilt (58½" x 74½") is patterned in the *McCall's Quilting* May/June 2014 issue.

## Fabric Requirements

Yellow large floral (Snowball Blocks, 3rd border)	3½ yds.
Red/white dot (Snowball Blocks)	1¼ yds.
Yellow small floral (Snowball Blocks, 2nd border)	2 yds.
White print <b>and</b> yellow diagonal plaid (Gingham Blocks)	1 yd. <b>each</b>
Pink print (Gingham Blocks)	1½ yds.*
Red print (Gingham Blocks)	¾ yd.*
Pink/white dot (1st border)	½ yd.
Yellow/pink diagonal plaid (binding)	⅞ yd.
Backing	8⅝ yds.
Batting size	100" x 100"
*Yardage and cutting based on fabric with at least 42" of usable width.	



### Cutting Instructions

(cut in order listed)

Yellow large floral

\*4 strips 5½" x 94", pieced from 10 width of fabric (WOF) strips  
25 squares 8½" x 8½"

Red/white dot

164 squares 3" x 3"

Yellow small floral

\*4 strips 3½" x 84", pieced from 9 WOF strips

16 squares 8½" x 8½"

White print and yellow diagonal plaid—cut from each:

4 strips 3½" x WOF

8 strips 2" x WOF

Pink print

3 strips 3½" x WOF

6 strips 2" x WOF

16 strips 1½" x WOF

Red print

6 strips 1½" x WOF

Pink/white dot

\*4 strips 1½" x 78", pieced from 8 WOF strips

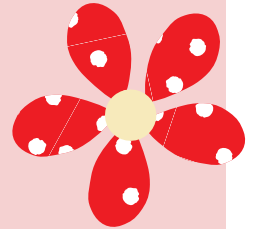
Yellow/pink diagonal plaid

10 strips 2½" x WOF (binding)

\*Border strips include extra length for trimming.

### Kit Offer

A kit of fabrics for **lap size** quilt top and binding is available while supplies last for \$105.99 ppd. (TX residents, \$113.83 ppd.) from Fat Quarter Shop™, PO Box 1544, Manchaca, TX 78652; 866-826-2069; [FatQuarterShop.com](http://FatQuarterShop.com).



### Piecing the Blocks

1 Draw diagonal line on wrong side of red/white dot 3" square. Referring to **Diagram I-A**, place marked square on yellow large floral 8½" square, right sides together, aligning raw edges. Stitch on drawn line; trim away and discard excess fabric. Open and press. Repeat on remaining corners to make Snowball Block A. Make 25.

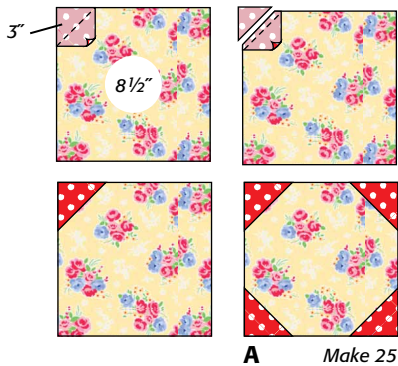


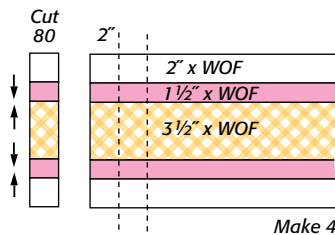
Diagram I-A

In same manner, make 16 Snowball Block Bs using yellow small floral 8½" squares and red/white dot 3" squares (**Diagram I-B**).



Diagram I-B

2 Referring to **Diagram II-A**, sew together 2 white print 2" x WOF, 2 pink print 1½" x WOF, and 1 yellow diagonal plaid 3½" x WOF strips to make strip set. Make 4. Press in direction of arrows. Cut into 80 segments 2" wide.



In same manner, make and press strip sets as shown in **Diagrams II-B** and **II-C**. Cut segments in widths and quantities shown.

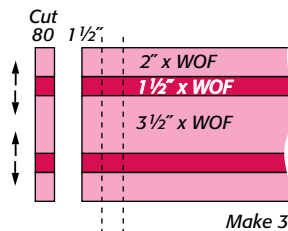


Diagram II-B

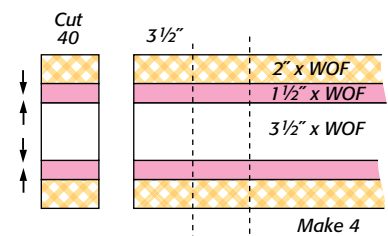


Diagram II-C

3 Referring to **Diagram III**, sew 5 segments together to make Gingham Block. Make 40.

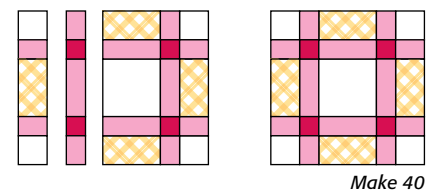
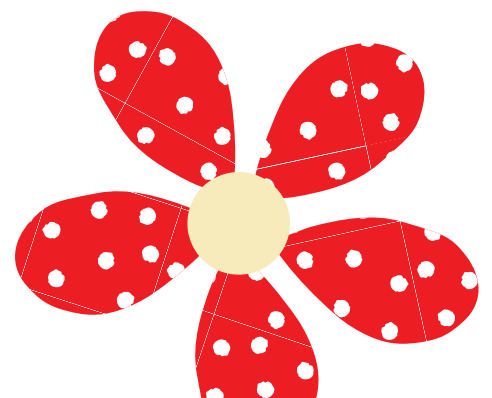
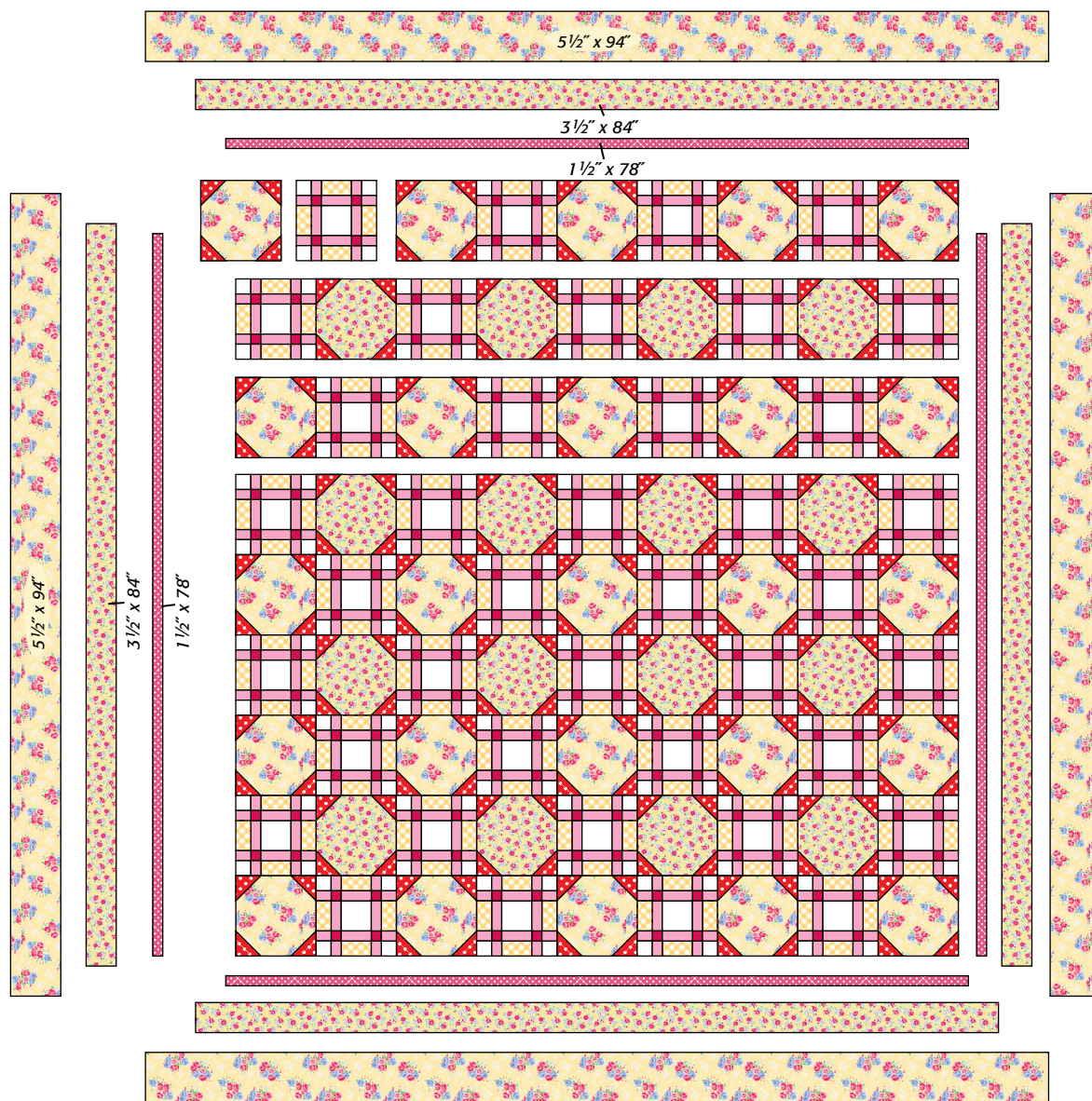


Diagram III





**Assembly Diagram**

**Assembling the Quilt Top**

**Note:** Refer to **Assembly Diagram** for following steps.

**4** Stitch 5 rows using 5 Snowball Block As and 4 Gingham Blocks each. Sew 4 rows using 5 Gingham Blocks and 4 Snowball Block Bs each. Sew rows together, alternating.

**5** Sew pink/white dot 78" strips to sides; trim even with top and bottom. Sew pink/white dot 78" strips to top/bottom; trim even with sides. In same manner, sew remaining borders to quilt, adding side strips first for each border and trimming even after each addition.

**Quilting and Finishing**

**6** Layer, baste, and quilt. Bind with yellow/pink diagonal plaid.