

Web Bonus: *Nuts and Bolts*



Designed by
SANDY KLOP

Machine Quilted by
LARA MIJATOVICH

SKILL LEVEL
ADVANCED

Finished
Quilt Size
50½" x 65¾"

Note: Piecing templates are at end of
pattern.

Number of Blocks and Finished Size
17 Pieced Blocks 10¾" x 10¾"

Strip piecing and a few simple shapes create this
mesmerizing design without the use of any set-in seams.



Fabric Requirements

12 white/blue, white/red, white/green, white/yellow, white/navy, and white/brown prints (blocks, piecing) $\frac{3}{8}$ yd. each
 6 blue, red, green, yellow, navy, and brown prints (blocks, piecing) $\frac{3}{8}$ yd. each
 Blue, red, green, yellow, navy, and brown small florals (blocks, piecing) $\frac{1}{2}$ yd. each
 Black solid (piecing, binding) $1\frac{1}{4}$ yds.
 Backing (piece widthwise) $3\frac{1}{2}$ yds.
 Batting size $59" \times 74"$
 See-through template plastic
 *See **Planning and Cutting**.

Planning and Cutting

Sandy made this quilt with the Happy Campers collection by American Jane for Moda. Her plan makes it possible to piece this quilt without any set-in seams. Read entire pattern before cutting fabrics.

To prepare piecing templates, trace Templates A, B, and C on see-through template plastic, including seam and grain lines and match points. Cut out on outer marked lines, and use large needle or stiletto to make small holes in plastic at match points. Place template on wrong sides of appropriate strip sets or fabrics; mark around edges. Cut out patches on marked lines. Mark match points on wrong sides of all template patches. To keep everything in order, arrange all patches on a design wall or other flat surface before assembling.

Cutting Instructions

☒ = cut in half twice diagonally
 ☐ = cut in half diagonally
 12 white/blue, white/red, white/green, white/yellow, white/navy, and white/brown prints—**cut from each:**
 4 strips $1\frac{1}{2}" \times 36"$
 6 blue, red, green, yellow, navy, and brown prints—**cut from each:**
 6 strips $1\frac{1}{2}" \times 36"$
 Blue, green, yellow, and brown small florals—**cut from each:**
 10 Template B
 Red and navy small florals—**cut from each:**
 11 Template B
 Black solid
 *7 strips $2\frac{1}{2}" \times$ width of fabric (binding)
 14 Template C
 3 squares $5\frac{7}{8}" \times 5\frac{7}{8}"$ ☒
 2 squares $5\frac{1}{2}" \times 5\frac{1}{2}"$ ☐
 *Cut first.

Making the Blocks and Pieced Units

1 Referring to **Diagram I-A**, stitch together 4 white/blue print $36"$ strips and 3 blue print $36"$ strips, alternating, to make strip set. Press in direction of arrow. Aligning horizontal lines on plastic Template A with seams, cut 8 Template A shapes.

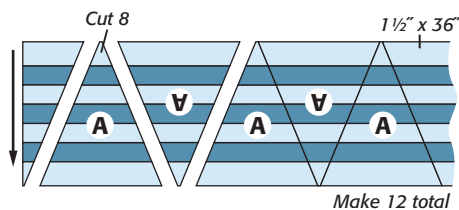


Diagram I-A

Repeat to make 11 remaining strip sets, for a total of 12, pairing coordinating white/color prints with each color print. Cut 8 Template A from each strip set (**Diagram I-B**). Mark match points on wrong side of each corner.

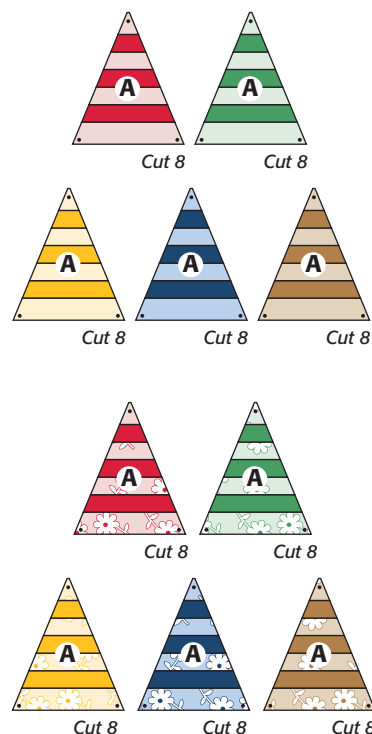


Diagram I-B

2 Referring to **Diagram II**, align match points and sew together 2 matching blue A's and 1 blue small floral B to make pieced unit. Make 8 total. Repeat to make 8 total of each color.

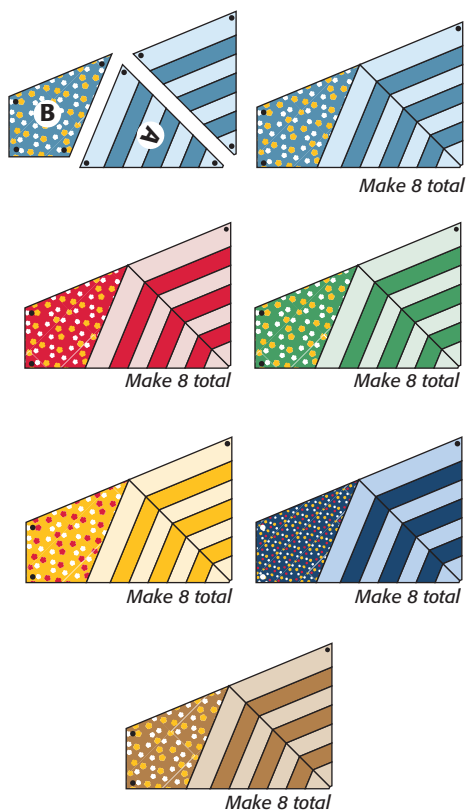


Diagram II

Quilt Top Assembly

Note: Refer to **Assembly Diagram** and **photo** for following steps, watching placement and orientation throughout. Black $5\frac{7}{8}$ " and $5\frac{1}{2}$ " triangles are cut slightly oversized and then trimmed after assembly.

3 On a flat design surface, arrange 4 matching red pieced units with A's forming an octagon shape. Add remaining pieced units so A's form 12 total octagons, arranged 3 across and 4 down. Next add remaining floral print B shapes around outer edges. Add black C's and $5\frac{7}{8}$ " quarter-square triangles around edges. Place black $5\frac{1}{2}$ " half-square triangles at corners. Check that all patches are placed correctly before beginning assembly.

4 Remove 1 blue and 1 red pieced units from design wall. Sew together (**Diagram III**) to make first Pieced Block. Return

block to design wall and check orientation. In same manner, make remaining 16 blocks for 17 total, sewing 1 at a time and returning to design wall.

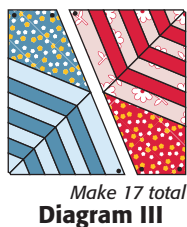


Diagram III

5 For 1st side unit, remove red pieced unit, black $5\frac{7}{8}$ " quarter-square triangle, navy small floral B, and black C from design wall. Referring to **Diagram IV**, sew black quarter-square triangle to pieced unit. Stitch together B and C and add to pieced unit to complete side unit. Return to design wall. In same manner make remaining 5 side units for 6 total.

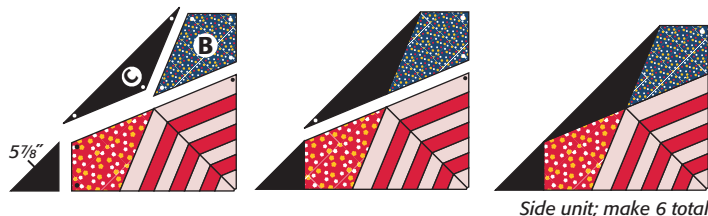
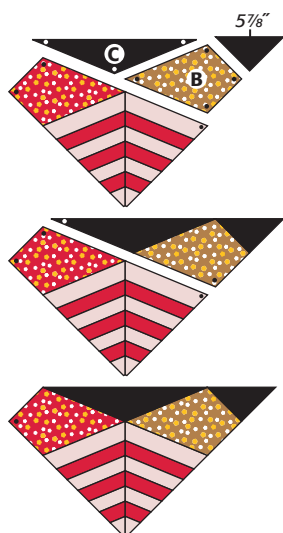


Diagram IV



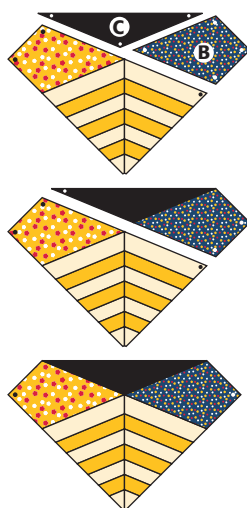
Assembly Diagram

6 From design wall remove black C, black $5\frac{7}{8}$ " quarter square triangle, brown B, and red pieced unit for 1st top/bottom unit. Add black C and quarter-square triangle to brown B (**Diagram V**). Stitch to pieced unit to complete top/bottom unit. Return to design wall. In same manner make remaining 3 top/bottom units for 4 total. You will have 2 quarter-square triangles left over.



Top/bottom unit; make 4 total
Diagram V

7 From design wall remove black C, navy floral B, and yellow pieced unit for 1st corner unit. Sew C to B (**Diagram VI**); add to pieced unit to complete corner unit. Return to design wall. In same manner make remaining 3 corner units for 4 total.



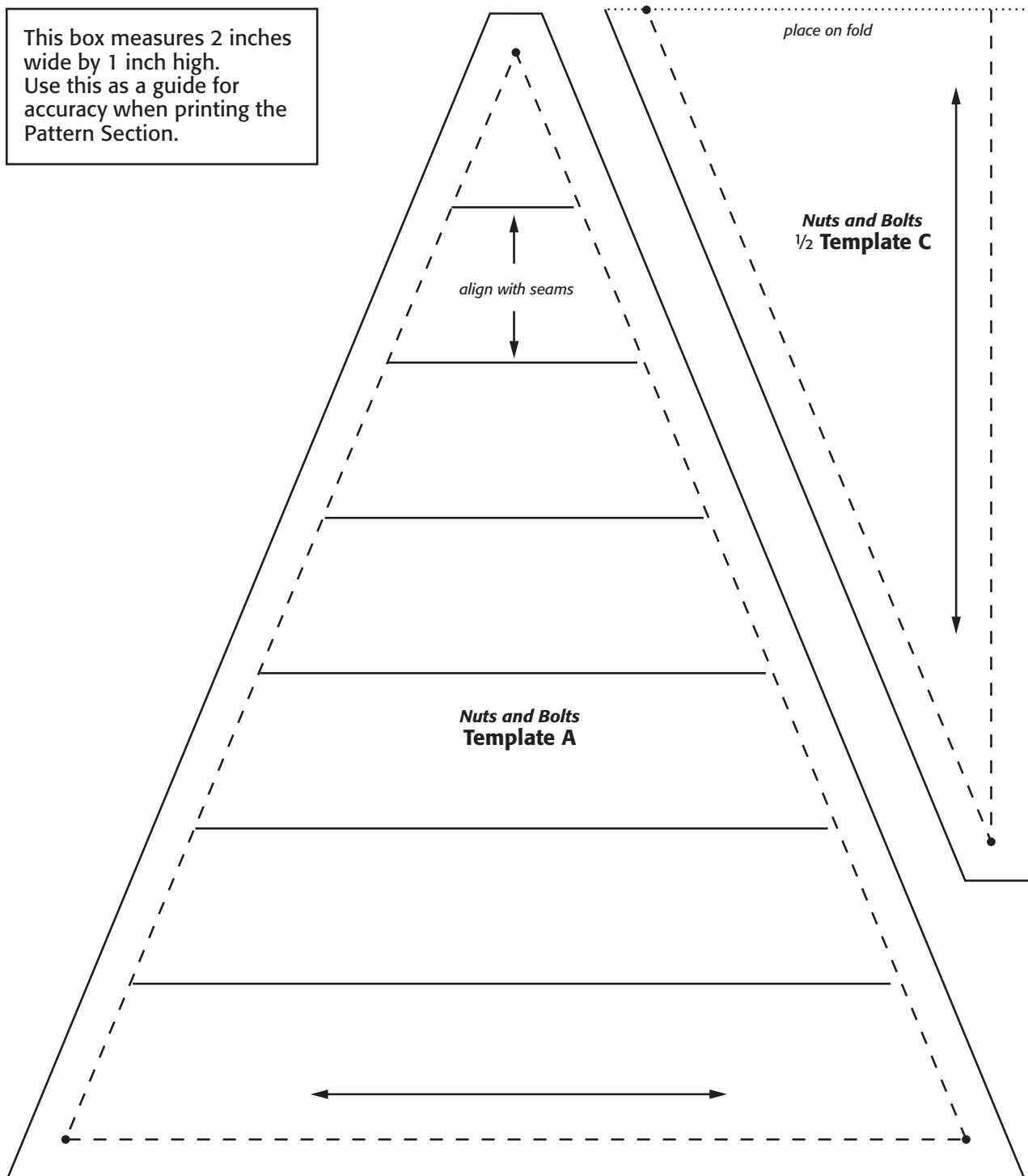
Corner unit; make 4 total
Diagram VI

8 Watching color placement, stitch 7 diagonal rows using side units, top/bottom units, blocks, and corner units. Sew rows together. Sew black $5\frac{1}{2}$ " half-square triangles to corners. **Trim** edges even.

Quilting and Finishing

9 Layer, baste, and quilt. Lara machine quilted an allover meander, leaving the black patches unquilted. Bind with black solid.

This box measures 2 inches wide by 1 inch high. Use this as a guide for accuracy when printing the Pattern Section.



This box measures 2 inches wide by 1 inch high.
Use this as a guide for
accuracy when printing the
Pattern Section.

