

Finished Size:
66" x 94"

Finished Blocks:
35 (10") Twenty-Five Patch blocks



New Hampshire Nights

Marianne Fons used some of her favorite light shirtings and moody, dark prints for the blocks in her design. She named the quilt in honor of her houseguest from New Hampshire, who helped Marianne select the "perfect" black stripe fabric for the sashing strips.

quilt by **MARIANNE FONTS** machine quilted by **LUANN DOWNS**

MATERIALS

- 12 fat quarters* assorted light prints for blocks
- 12 fat quarters* assorted dark prints for blocks
- 3¼ yards black stripe for blocks, sashing units, and binding
- 1⅛ yards gold print for sashing units
- ½ yard blue print for sashing squares
- 5¾ yards backing fabric
- 74" x 102" rectangle of quilt batting
- *fat quarter = 18" x 20"

NOTE: For more variety, use more fabrics.

CUTTING

Measurements include ¼" seam allowances.

FROM LIGHT PRINT FAT QUARTERS, CUT A TOTAL OF:

- 65 (2½"-wide) strips for strip sets.

FROM DARK PRINT FAT QUARTERS, CUT A TOTAL OF:

- 60 (2½"-wide) strips for strip sets.

FROM BLACK STRIPE, CUT:

- 8 (10½"-wide) strips. From strips, cut 58 (10½" x 4½") A rectangles.
- 9 (2¼"-wide) strips for binding.

FROM GOLD PRINT, CUT:

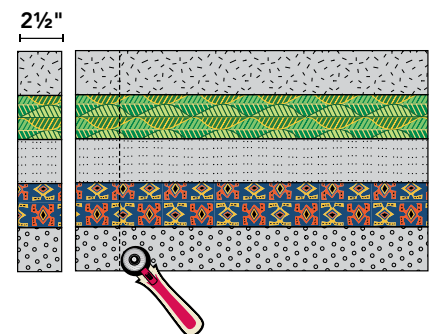
- 15 (2½"-wide) strips. From strips, cut 232 (2½") B squares.

FROM BLUE PRINT, CUT:

- 3 (4½"-wide) strips. From strips, cut 24 (4½") C squares.

TWENTY-FIVE PATCH BLOCK ASSEMBLY

1. Join 3 assorted light print strips and 2 assorted dark print strips as shown in *Strip Set #1 Diagram*. Make 15 Strip Set #1. From strip sets, cut 105 (2½"-wide) #1 segments.



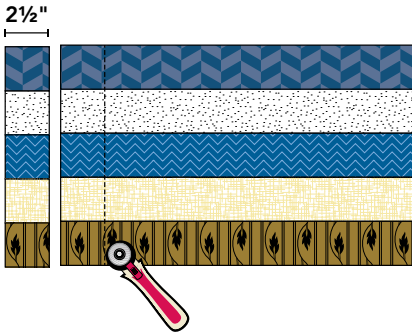
Strip Set #1 Diagram

Sew Smart™ Tip:

Alternate sewing direction from strip to strip when creating strip sets to help keep strip sets straight.

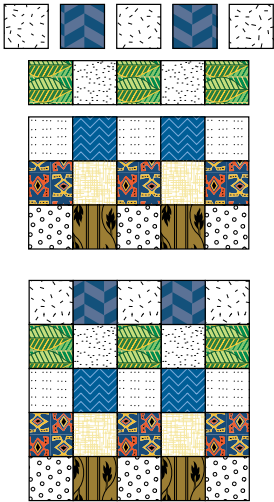


- In the same manner, make 10 Strip Set #2 using 3 assorted dark print strips and 2 assorted light print strips in each. From strip sets, cut 70 (2½"-wide) #2 segments. (*Strip Set #2 Diagram*)

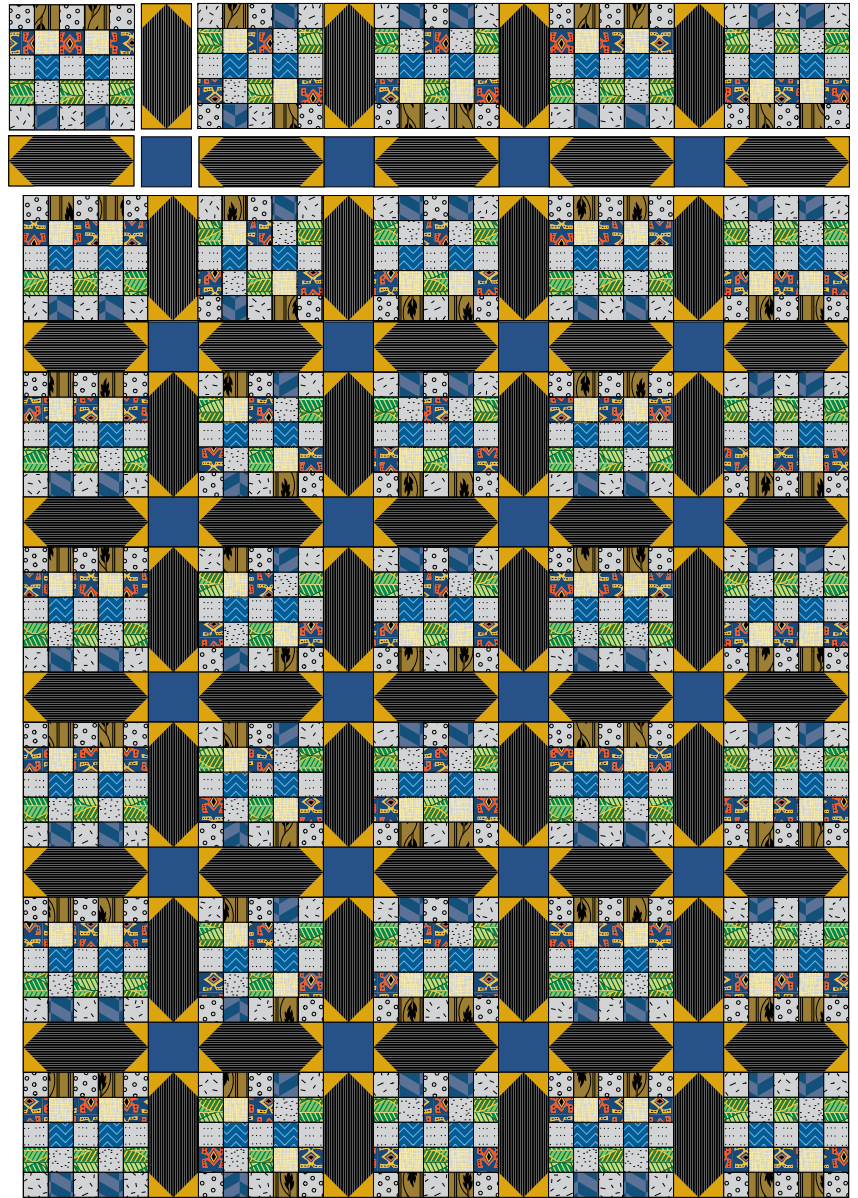


Strip Set #2 Diagram

- Join 3 segment #1 and 2 segment #2 as shown in *Twenty-Five Patch Block Diagrams*. Make 35 Twenty-Five Patch blocks.



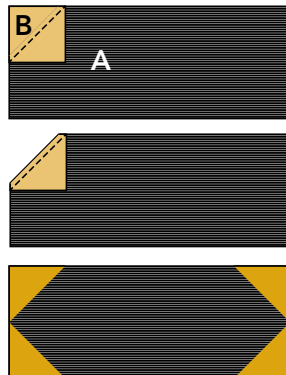
Twenty-Five Patch Block Diagrams



Quilt Top Assembly Diagram

SASHING UNIT ASSEMBLY

- Referring to *Sashing Unit Diagrams*, place 1 gold print B square on 1 black stripe A rectangle, right sides facing. Stitch diagonally from corner to corner as shown. Trim ¼" beyond stitching. Press open to reveal triangle.



Sashing Unit Diagrams

- Repeat for remaining corners of rectangle to complete 1 Sashing Unit. Make 58 Sashing Units

QUILT ASSEMBLY

- Lay out blocks, Sashing Units, and blue print C squares as shown in *Quilt Top Assembly Diagram*.
- Join into rows; join rows to complete quilt top.



FINISHING

1. Divide backing into 2 (2 $\frac{7}{8}$ -yard) lengths. Join panels lengthwise.
2. Layer backing, batting, and quilt top; baste. Quilt as desired.
3. Join 2 $\frac{1}{4}$ "-wide black stripe strips into 1 continuous piece for straight-grain French-fold binding. Add binding to quilt. ◀



MARIANNE FONS

is a beloved leader in the quilting community. One of the namesake founders of Fons & Porter, Marianne now devotes her time to various quilt initiatives, including the Quilts of Valor foundation and the Iowa Quilt Museum in Winterset, Iowa.