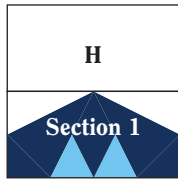


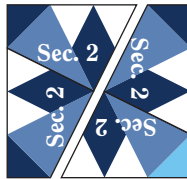
Dakota Snowstorm

Foundation Patterns

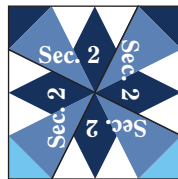
Use these foundations instead of templates to make *Dakota Snowstorm* if you prefer this method. Additional yardage may be required for foundation piecing. Complete directions for *Dakota Snowstorm* appear in *QUILTMAKER* May/June '08 (No. 121). If you cannot find this issue at your local quilt shop, order back issues at VillageQuiltShop.com.



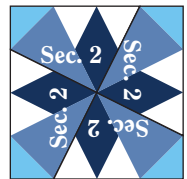
Block U
Make 32



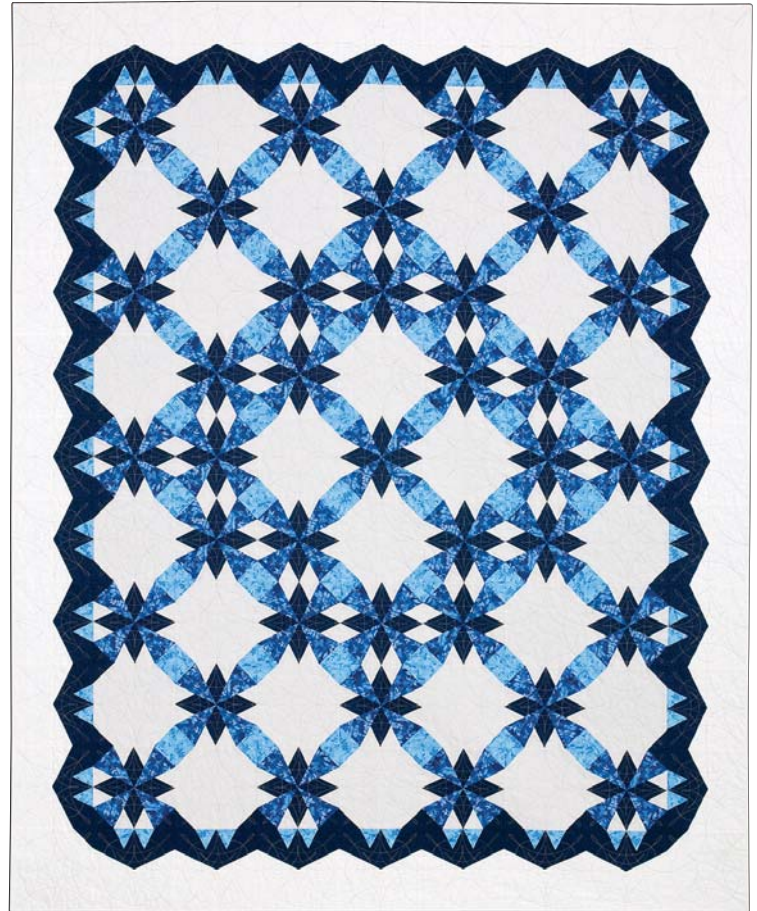
Block V Piecing
Make 4




Block X
Make 10

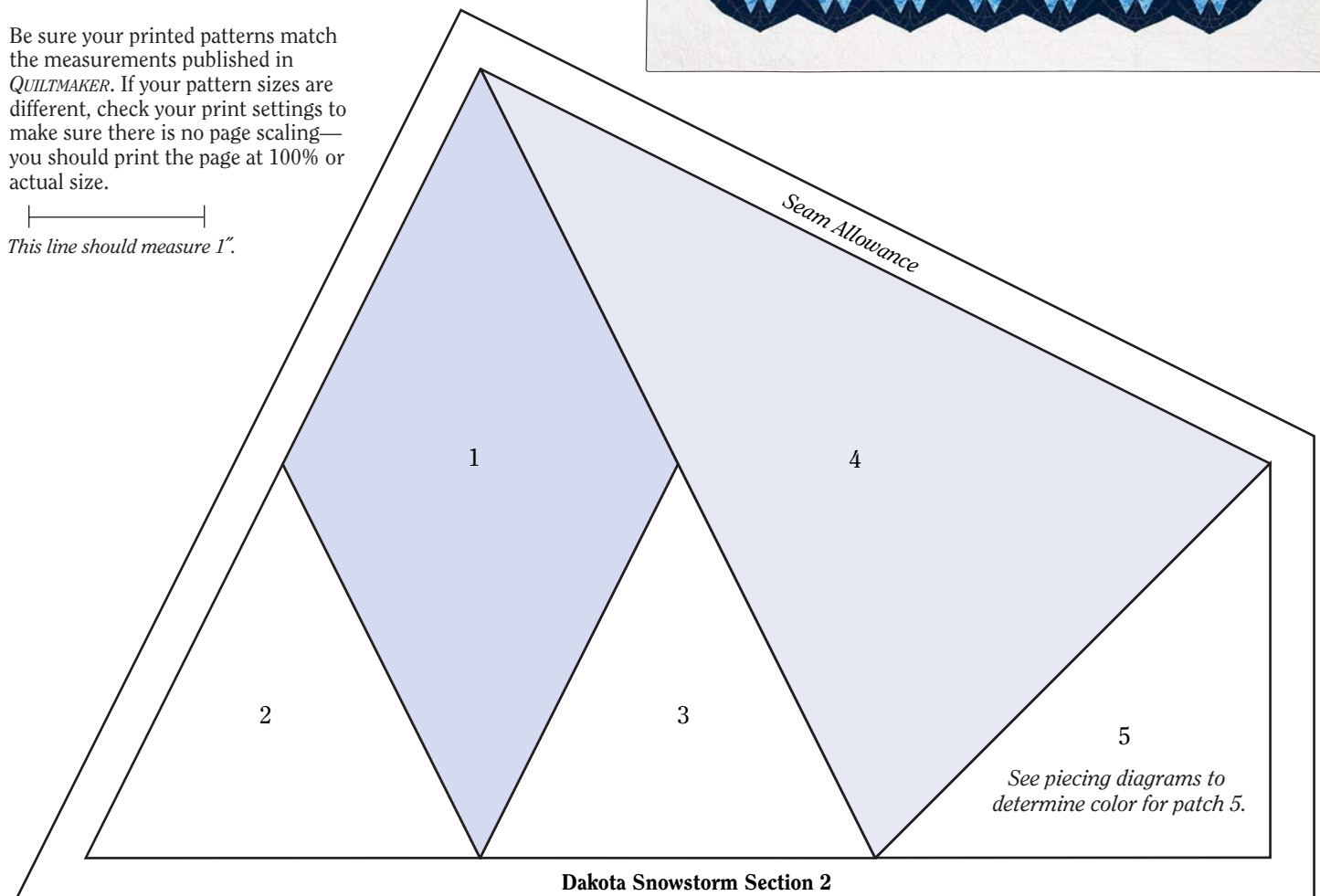


Block Y
Make 23



Be sure your printed patterns match the measurements published in *QUILTMAKER*. If your pattern sizes are different, check your print settings to make sure there is no page scaling—you should print the page at 100% or actual size.


This line should measure 1".



Dakota Snowstorm Section 2

