



Star Light Star Bright

A variation of the traditional Milky Way block is created when blocks are joined with pieced sashing.



QUILT BY **Christine Stainbrook**.

Size: 55" × 69"

Blocks: 12 (12") blocks

MATERIALS

NOTE: Fabrics in the quilt shown are from the Sew Heavenly collection designed by Dan Morris for RJR Fabrics.

1¼ yards blue stripe for border

½ yard dark blue print for blocks

1¼ yards medium blue print for borders

¾ yard light blue print for sashing

1 yard black print for blocks

⅝ yard yellow print for blocks

1½ yards cream print for blocks and sashing

Paper-backed fusible web

3½ yards backing fabric

Twin-size quilt batting



Christine Stainbrook has been designing and making quilts for more than twenty-five years and teaching classes for five years. She likes using traditional block patterns, modifying them to show off today's fabrics.

Contact her at: www.projecthouse360.com

CUTTING

Measurements include $\frac{1}{4}$ " seam allowances. Border strips are exact length needed. You may want to cut them longer to allow for piecing variations. Pattern for Circle is on page 4. Follow manufacturer's instructions for using fusible web.

From blue stripe, cut:

- 4 (4"-wide) **lengthwise** strips, centering design on each. From strips, cut 2 (4" \times 58 $\frac{1}{2}$ ") side middle borders and 2 (4" \times 44 $\frac{1}{2}$ ") top and bottom middle borders.
- 12 Circles.

NOTE: Apply fusible web to wrong side of fabric before cutting Circles.

From dark blue print, cut:

- 6 (2 $\frac{1}{2}$ "-wide) strips for strip sets.

From medium blue print, cut:

- 2 (4 $\frac{1}{2}$ "-wide) strips. From strips, cut 12 (4 $\frac{1}{2}$ ") A squares.
- 12 (2 $\frac{1}{2}$ "-wide) strips. Piece strips to make 2 (2 $\frac{1}{2}$ " \times 65 $\frac{1}{2}$ ") side outer borders, 2 (2 $\frac{1}{2}$ " \times 55 $\frac{1}{2}$ ") top and bottom outer borders, 2 (2 $\frac{1}{2}$ " \times 54 $\frac{1}{2}$ ") side inner borders, and 2 (2 $\frac{1}{2}$ " \times 44 $\frac{1}{2}$ ") top and bottom inner borders.

- 7 (2 $\frac{1}{4}$ "-wide) strips for binding.

From light blue print, cut:

- 3 (2 $\frac{1}{2}$ "-wide) strips. From strips, cut 40 (2 $\frac{1}{2}$ ") B squares.

From black print, cut:

- 6 (4 $\frac{1}{2}$ "-wide) strips. From strips, cut 48 (4 $\frac{1}{2}$ ") A squares.
- 2 (2 $\frac{1}{2}$ "-wide) strips. From strips, cut 17 (2 $\frac{1}{2}$ ") B squares.

From yellow print, cut:

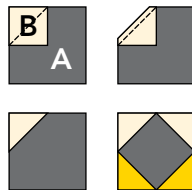
- 1 (4"-wide) strip. From strip, cut 4 (4") E squares.
- 6 (2 $\frac{1}{2}$ "-wide) strips. From strips, cut 96 (2 $\frac{1}{2}$ ") B squares.

From cream print, cut:

- 17 (2 $\frac{1}{2}$ "-wide) strips. From 11 strips, cut 34 (2 $\frac{1}{2}$ " \times 5 $\frac{1}{2}$ ") D rectangles and 96 (2 $\frac{1}{2}$ ") B squares. Remaining strips are for strip sets.
- 3 (1 $\frac{1}{2}$ "-wide) strips. From strips, cut 68 (1 $\frac{1}{2}$ ") C squares.

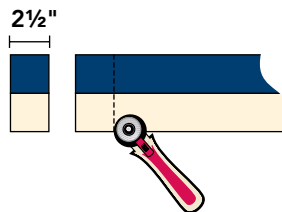
BLOCK ASSEMBLY

1. Referring to *Square-in-a-Square Unit Diagrams*, place 1 cream print B square atop 1 black print A square, right sides facing. Stitch diagonally from corner to corner as shown. Trim $\frac{1}{4}$ " beyond stitching. Press open to reveal triangle. Repeat for remaining corners using 1 cream print B square and 2 yellow print B squares to complete 1 Square-in-a-Square Unit. Make 48 Square-in-a-Square Units.



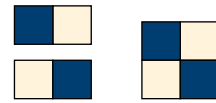
Square-in-a-Square Unit Diagrams

2. Join 1 dark blue print strip and 1 cream print strip as shown in *Strip Set Diagram*. Make 6 strip sets. From strip sets, cut 96 (2 $\frac{1}{2}$ "-wide) segments.



Strip Set Diagram

3. Join 2 segments as shown in *Four Patch Unit Diagrams*. Make 48 Four Patch Units.



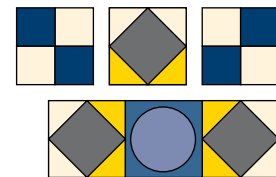
Four Patch Unit Diagrams

4. Position 1 Circle atop 1 medium blue print A square as shown in *Center Unit Diagram*. Fuse in place; machine applique using matching thread. Make 12 Center Units.

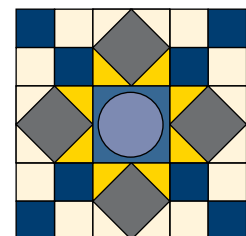


Center Unit Diagram

5. Lay out 4 Four Patch Units, 4 Square-in-a-Square Units, and 1 Center Unit as shown in *Block Assembly Diagram*. Join into rows; join rows to complete 1 block (*Block Diagram*). Make 12 blocks.



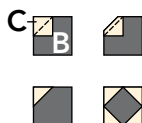
Block Assembly Diagram



Block Diagram

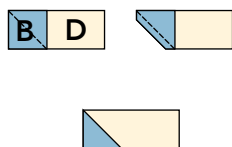
SASHING UNIT ASSEMBLY

1. Referring to *Square-in-a-Square Unit Diagrams*, place 1 cream print C square atop 1 black print B square, right sides facing. Stitch diagonally from corner to corner as shown. Trim $\frac{1}{4}$ " beyond stitching. Press open to reveal triangle. Repeat for remaining corners to complete 1 Square-in-a-Square Unit. Make 17 Square-in-a-Square Units.



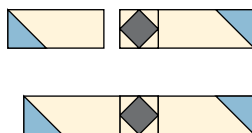
Square-in-a-Square Unit Diagrams

2. Referring to *Diagonal Seams Unit Diagrams*, place 1 light blue print B square atop 1 cream print D rectangle, right sides facing. Stitch diagonally from corner to corner as shown. Trim $\frac{1}{4}$ " beyond stitching. Press open to reveal triangle to complete 1 Diagonal Seams Unit. Make 34 Diagonal Seams Units.



Diagonal Seams Unit Diagrams

3. Join 2 Diagonal Seams Units and 1 Square-in-a-Square Unit as shown in *Sashing Unit Diagrams*. Make 17 Sashing Units.

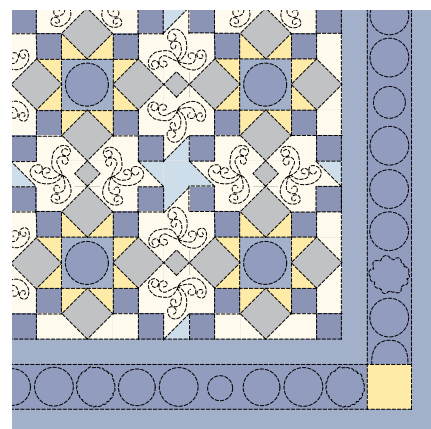


Sashing Unit Diagrams

QUILT ASSEMBLY

1. Lay out blocks, Sashing Units, and light blue print B squares as shown in *Quilt Top Assembly Diagram*. Join into rows; join rows to complete quilt center.
2. Add medium blue print side inner borders to quilt center.
3. Add medium blue print top and bottom inner borders to quilt.
3. Add blue stripe side middle borders to quilt.
4. Add 1 yellow print E square to each end of blue stripe top and bottom middle borders. Add borders to quilt.
5. Add medium blue print side outer borders to quilt. Add medium blue print top and bottom outer borders to quilt.

2. Layer backing, batting, and quilt top; baste. Quilt as desired. Quilt shown was quilted with in the ditch, outlining circles, and with a feather design in cream background areas (*Quilting Diagram*).
3. Join $2\frac{1}{4}$ "-wide medium blue print strips into 1 continuous piece for straight-grain French-fold binding. Add binding to quilt.

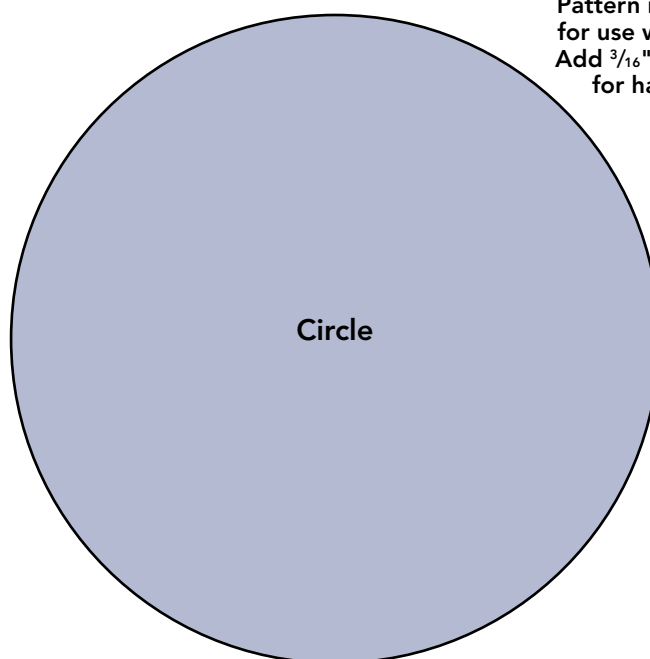


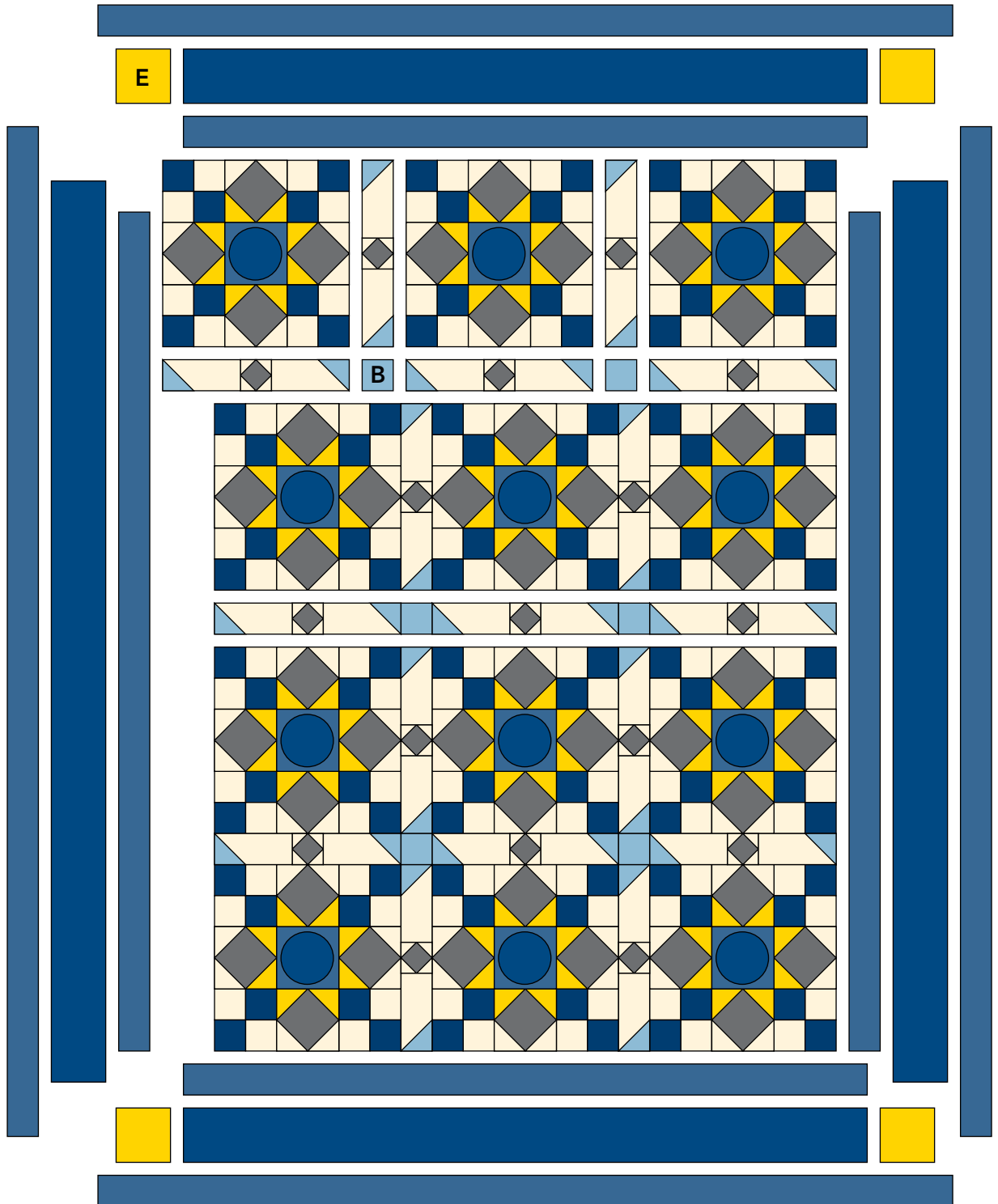
Quilting Diagram

FINISHING

1. Divide backing into 2 ($1\frac{3}{4}$ -yard) lengths. Join panels lengthwise. Seam will run horizontally.

Pattern is shown full size for use with fusible web. Add $\frac{3}{16}$ " seam allowance for hand appliqué.





Quilt Top Assembly Diagram

	Twin (69" × 97")	Full (83" × 97")	King (111" × 111")
Blocks	24	30	49
Setting	4 × 6	5 × 6	7 × 7
Blue Stripe	2½ yards	2½ yards	2⅞ yards
Dark Blue Print	1 yard	1¼ yards	2 yards
Medium Blue Print	2¼ yards	2½ yards	3¼ yards
Light Blue Print	½ yard	¾ yard	1 yard
Black Print	1¾ yards	2¼ yards	3¼ yards
Yellow Print	1 yard	1¼ yards	2 yards
Cream Print	2¾ yards	3½ yards	5¾ yards
Backing Fabric	5¾ yards	7½ yards	10 yards
Batting	Full-size	Queen-size	King-size

TWIN-SIZE CUTTING

From blue stripe, cut:

- 4 (4"-wide) **lengthwise** strips, centering design on each. From strips, cut 2 (4" × 86½") side middle borders and 2 (4" × 58½") top and bottom middle borders.
- 24 Circles.

NOTE: Apply fusible web to wrong side of fabric before cutting Circles.

From dark blue print, cut:

- 12 (2½"-wide) strips for strip sets.

From medium blue print, cut:

- 3 (4½"-wide) strips. From strips, cut 24 (4½") A squares.
- 16 (2½"-wide) strips. Piece strips to make 2 (2½" × 93½") side outer borders, 2 (2½" × 69½") top and bottom outer borders, 2 (2½" × 82½") side inner borders, and 2 (2½" × 58½") top and bottom inner borders.
- 9 (2¼"-wide) strips for binding.

From light blue print, cut:

- 6 (2½"-wide) strips. From strips, cut 91 (2½") B squares.

From black print, cut:

- 12 (4½"-wide) strips. From strips, cut 96 (4½") A squares.
- 3 (2½"-wide) strips. From strips, cut 38 (2½") B squares.

From yellow print, cut:

- 1 (4"-wide) strip. From strip, cut 4 (4") E squares.
- 12 (2½"-wide) strips. From strips, cut 192 (2½") B squares.

From cream print, cut:

- 35 (2½"-wide) strips. From 23 strips, cut 76 (2½" × 5½") D rectangles and 192 (2½") B squares. Remaining strips are for strip sets.
- 6 (1½"-wide) strips. From strips, cut 152 (1½") C squares.

FULL-SIZE CUTTING

From blue stripe, cut:

- 4 (4"-wide) **lengthwise** strips, centering design on each. From strips, cut 2 (4" × 86½") side middle borders and 2 (4" × 72½") top and bottom middle borders.
- 30 Circles.

NOTE: Apply fusible web to wrong side of fabric before cutting Circles.

From dark blue print, cut:

- 15 (2½"-wide) strips for strip sets.

From medium blue print, cut:

- 4 (4½"-wide) strips. From strips, cut 30 (4½") A squares.
- 18 (2½"-wide) strips. Piece strips to make 2 (2½" × 93½") side outer borders, 2 (2½" × 83½") top and bottom outer borders, 2 (2½" × 82½") side inner borders, and 2 (2½" × 72½") top and bottom inner borders.
- 10 (2¼"-wide) strips for binding.

From light blue print, cut:

- 8 (2½"-wide) strips. From strips, cut 118 (2½") B squares.

From black print, cut:

- 15 (4½"-wide) strips. From strips, cut 120 (4½") A squares.
- 4 (2½"-wide) strips. From strips, cut 49 (2½") B squares.

From yellow print, cut:

- 1 (4"-wide) strip. From strip, cut 4 (4") E squares.
- 15 (2½"-wide) strips. From strips, cut 240 (2½") B squares.

From cream print, cut:

- 44 (2½"-wide) strips. From 29 strips, cut 98 (2½" × 5½") D rectangles and 240 (2½") B squares. Remaining strips are for strip sets.
- 8 (1½"-wide) strips. From strips, cut 196 (1½") C squares.

KING-SIZE CUTTING

From blue stripe, cut:

- 4 (4"-wide) **lengthwise** strips, centering design on each. From strips, cut 2 (4" × 100½") side middle borders and 2 (4" × 100½") top and bottom middle borders.
- 49 Circles.

NOTE: Apply fusible web to wrong side of fabric before cutting Circles.

From dark blue print, cut:

- 25 (2½"-wide) strips for strip sets.

From medium blue print, cut:

- 7 (4½"-wide) strips. From strips, cut 49 (4½") A squares.

- 22 (2½"-wide) strips. Piece strips to make 2 (2½" × 107½") side outer borders, 2 (2½" × 111½") top and bottom outer borders, 2 (2½" × 96½") side inner borders, and 2 (2½" × 98½") top and bottom inner borders.
- 12 (2¼"-wide) strips for binding.

From light blue print, cut:

- 11 (2½"-wide) strips. From strips, cut 168 (2½") B squares.

From black print, cut:

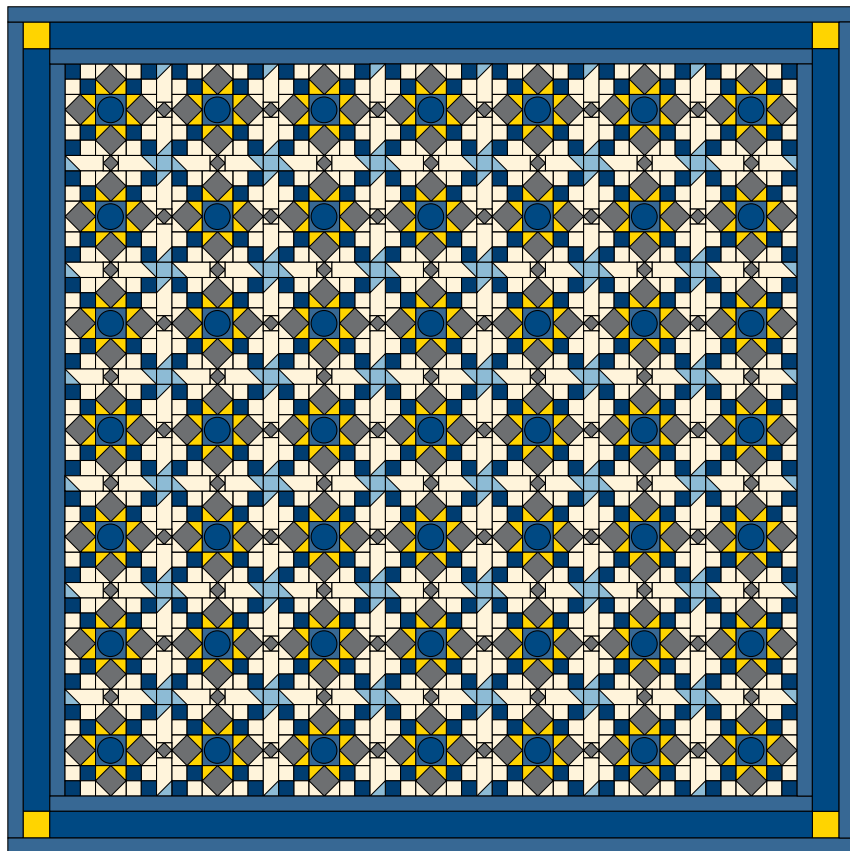
- 25 (4½"-wide) strips. From strips, cut 196 (4½") A squares.
- 6 (2½"-wide) strips. From strips, cut 84 (2½") B squares.

From yellow print, cut:

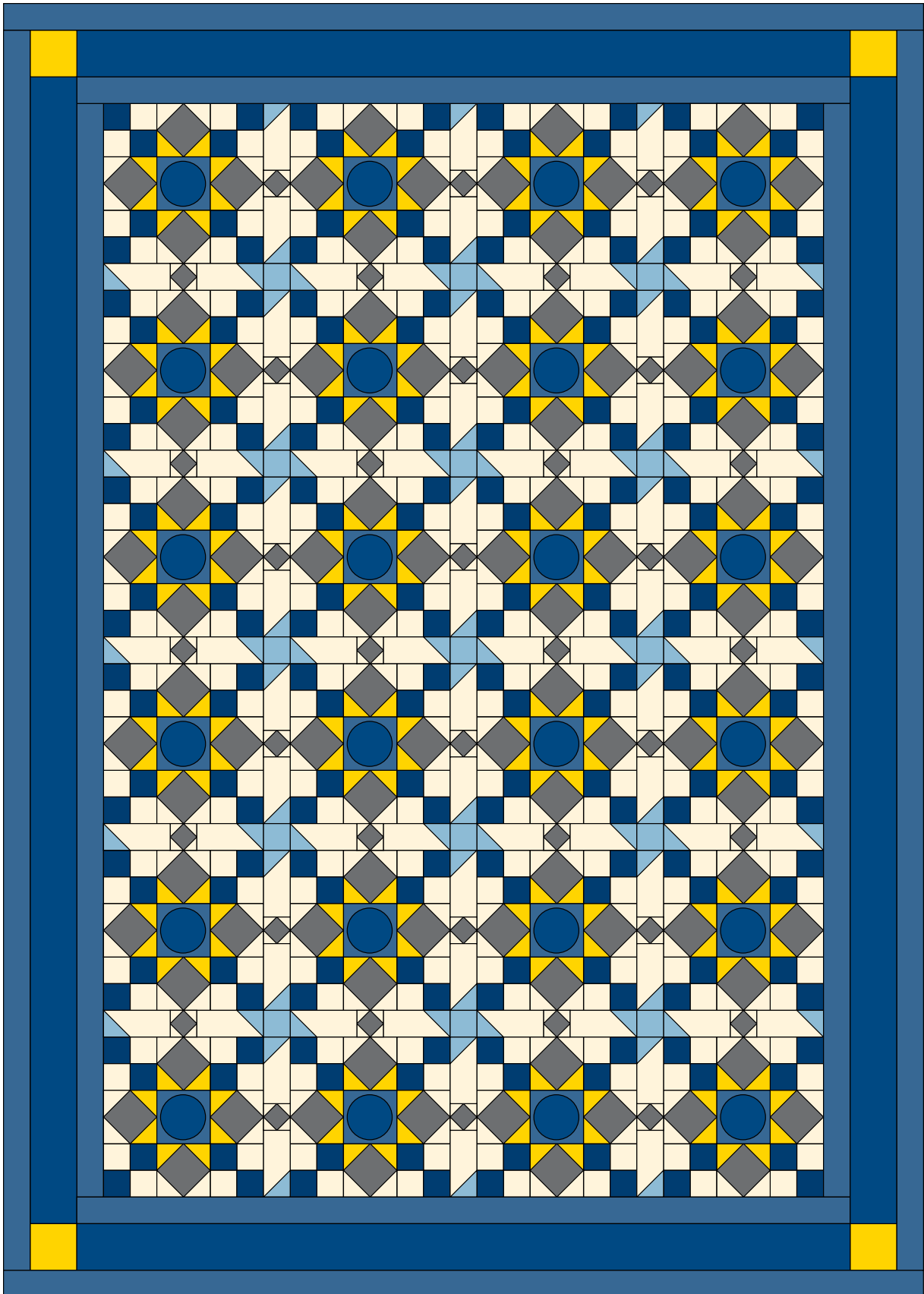
- 1 (4"-wide) strip. From strip, cut 4 (4") E squares.
- 25 (2½"-wide) strips. From strips, cut 392 (2½") B squares.

From cream print, cut:

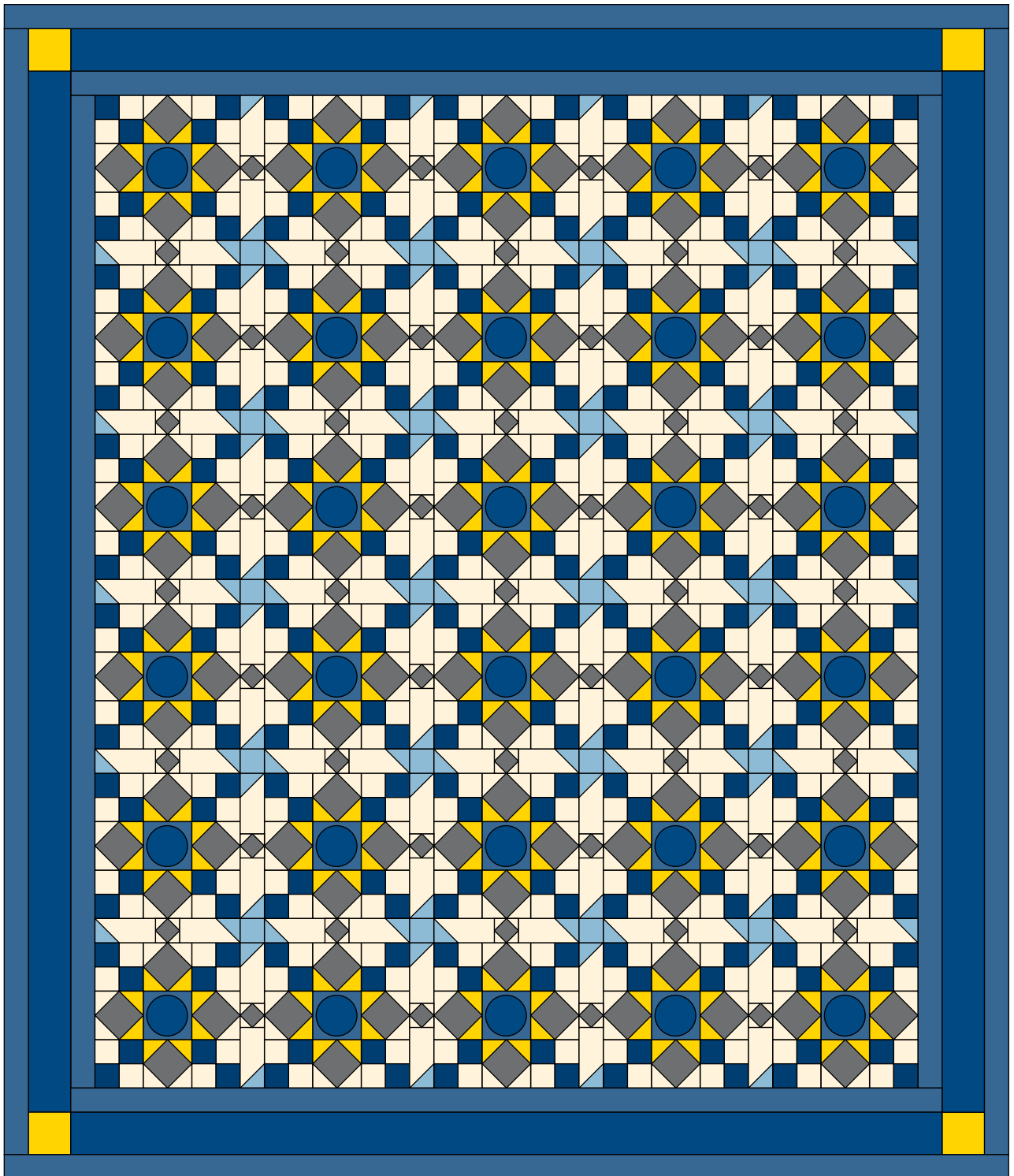
- 74 (2½"-wide) strips. From 49 strips, cut 168 (2½" × 5½") D rectangles and 392 (2½") B squares. Remaining strips are for strip sets.
- 13 (1½"-wide) strips. From strips, cut 336 (1½") C squares. ✱



King Size Diagram



Twin Size Diagram



Full Size Diagram