

CUTTING FOR TWIN SIZE

FROM BROWN PRINT FAT
QUARTERS, CUT A TOTAL OF:

FROM PINK PRINT FAT QUARTERS,
CUT A TOTAL OF:

- 36 (2⅜"-wide) strips. From each strip, cut 8 (2⅜") squares. Cut squares in half diagonally to make 576 half-square A triangles.

- 72 (1¼"-wide) strips. From strips, cut 143 (1¼" × 8½") strips for strip sets.

FROM EACH LIGHT PRINT FAT
QUARTER, CUT:

- 3 (2⅜"-wide) strips. From strips, cut 22 (2⅜") squares. Cut squares in half diagonally to make 44 half-square A triangles.
- 7 (1¼"-wide) strips. From strips, cut 11 (1¼" × 8½") strips for strip sets and 11 (2") B squares.

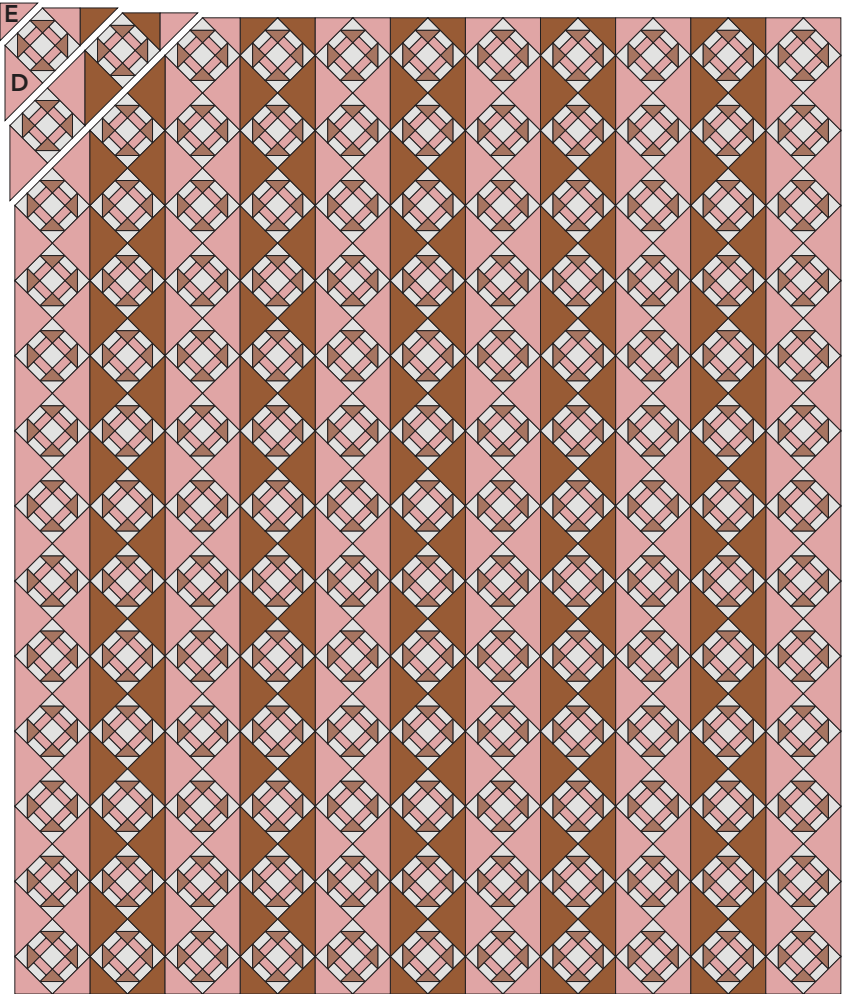
FROM BROWN PRINT, CUT:

- 9 (5⅜"-wide) strips. From strips, cut 60 (5⅜") squares. Cut squares in half diagonally to make 120 half-square C triangles.
- 2 (4⅞"-wide) strips. From strips, cut 12 (4⅞") squares. Cut squares in half diagonally to make 24 half-square E triangles.

FROM PINK PRINT, CUT:

- 2 (7¾"-wide) strips. From strips, cut 6 (7¾") squares. Cut squares in half diagonally in both directions to make 24 quarter-square D triangles.
- 9 (5⅜"-wide) strips. From strips, cut 60 (5⅜") squares. Cut squares in half diagonally to make 120 half-square C triangles.
- 2 (4⅞"-wide) strips. From strips, cut 14 (4⅞") squares. Cut squares in half diagonally to make 28 half-square E triangles.
- 8 (2¼"-wide) strips for binding.

	TWIN 70" × 82¾"	QUEEN 82¾" × 95½"
CHURN DASH BLOCKS	143	195
SETTING BLOCKS	120	168
BROWN PRINT FAT QUARTERS	6	7
PINK PRINT FAT QUARTERS	7	8
LIGHT PRINT FAT QUARTERS	13	18
BROWN PRINT	1¾ yards	2¼ yards
PINK PRINT	2¾ yards	3¼ yards
BACKING FABRIC	5 yards	7½ yards
BATTING	Twin-size	Queen-size



Twin Quilt Top Assembly Diagram

CUTTING FOR QUEEN SIZE

FROM BROWN PRINT FAT QUARTERS, CUT A TOTAL OF:

- 49 ($2\frac{3}{8}$ "-wide) strips. From each strip, cut 8 ($2\frac{3}{8}$ ") squares. Cut squares in half diagonally to make 780 half-square A triangles.

FROM PINK PRINT FAT QUARTERS, CUT A TOTAL OF:

- 98 ($1\frac{1}{4}$ "-wide) strips. From strips, cut 195 ($1\frac{1}{4}" \times 8\frac{1}{2}"$) strips for strip sets.

FROM EACH LIGHT PRINT FAT QUARTER, CUT:

- 3 ($2\frac{3}{8}$ "-wide) strips. From strips, cut 22 ($2\frac{3}{8}$ ") squares. Cut squares in half diagonally to make 44 half-square A triangles.
- 7 ($1\frac{1}{4}$ "-wide) strips. From strips, cut 11 ($1\frac{1}{4}" \times 8\frac{1}{2}"$) strips for strip sets and 11 (2") B squares.

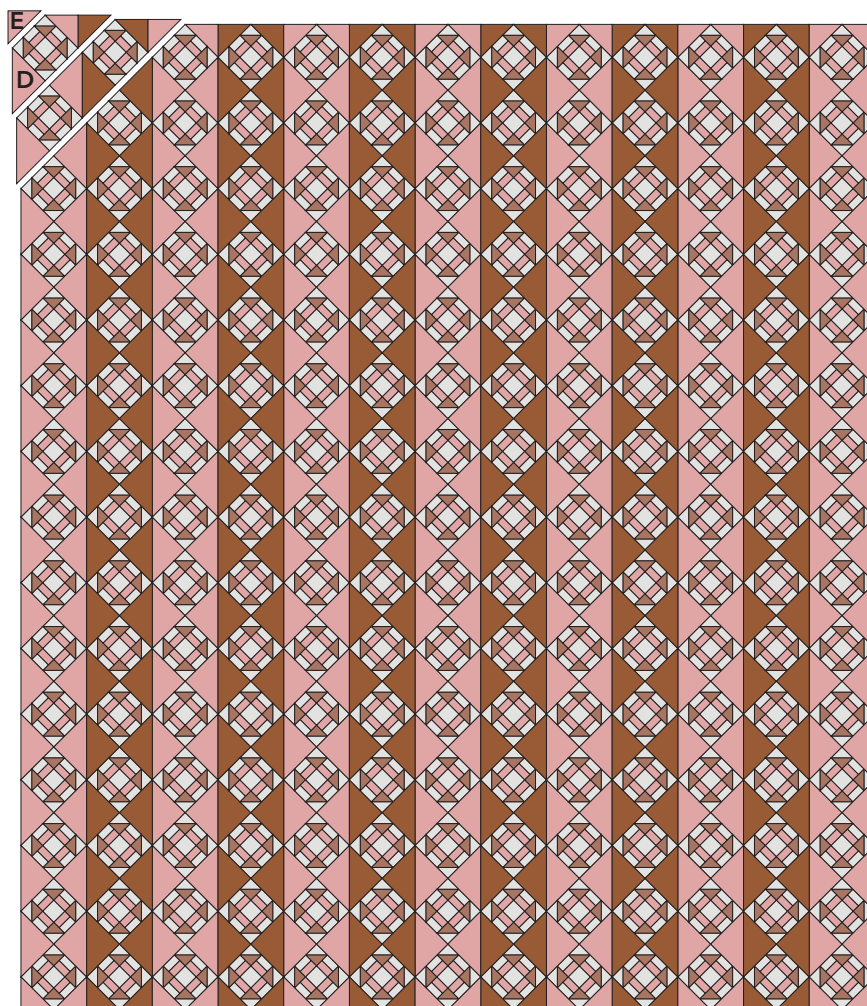
FROM BROWN PRINT, CUT:

- 12 ($5\frac{3}{8}$ "-wide) strips. From strips, cut 84 ($5\frac{3}{8}$ ") squares. Cut squares in half diagonally to make 168 half-square C triangles.
- 2 ($4\frac{1}{8}$ "-wide) strips. From strips, cut 14 ($4\frac{1}{8}$ ") squares. Cut squares in half diagonally to make 28 half-square E triangles.

FROM PINK PRINT, CUT:

- 2 ($7\frac{3}{4}$ "-wide) strips. From strips, cut 7 ($7\frac{3}{4}$ ") squares. Cut squares in half diagonally in both directions to make 28 quarter-square D triangles.
- 12 ($5\frac{3}{8}$ "-wide) strips. From strips, cut 84 ($5\frac{3}{8}$ ") squares. Cut squares in half diagonally to make 168 half-square C triangles.

- 2 ($4\frac{1}{8}$ "-wide) strips. From strips, cut 16 ($4\frac{1}{8}$ ") squares. Cut squares in half diagonally to make 32 half-square E triangles.
- 10 ($2\frac{1}{4}$ "-wide) strips for binding.



Queen Quilt Top Assembly Diagram