



TRIED & TRUE

TESTED FOR YOU

We made our version in bright seasonal prints. Fabrics used in our block are from the Merry & Bright collection by Kimberbell Designs for Maywood Studio.

CROSSING WAVES SIZE CHART

MATERIALS	TWIN SIZE 74" × 92½"	QUEEN SIZE 92½" × 111"
BLOCKS	20	30
ASSORTED PRINTS	20 fat quarters	30 fat quarters
BLUE SOLID	3¾ yards	5¼ yards
DARK BLUE PRINT	1½ yards	2¼ yards
BACKING FABRIC	7⅞ yards	9 yards
BATTING	Full-size	King-size

TWIN-SIZE CUTTING

FROM BLUE SOLID, CUT:

- 10 (10"-wide) strips. From strips, cut 40 (10") squares. Cut squares in half diagonally in both directions to make 160 quarter-square C triangles.
- 8 (3¼"-wide) strips for strip sets.

FROM DARK BLUE PRINT, CUT:

- 4 (8"-wide) strips. From strips, cut 80 (8" × 2") D rectangles.
- 1 (7½"-wide) strip. From strip, cut 20 (7½" × 2") A rectangles.
- 4 (2"-wide) strips for strip sets.

FROM ASSORTED PRINT FAT QUARTERS, CUT A TOTAL OF:

- 60 (4¾"-wide) strips. From strips, cut 240 (4¾") squares. Cut squares in half diagonally in both directions to make 960 quarter-square B triangles.
- 20 (2¼"-wide) strips for binding.

QUEEN-SIZE CUTTING

FROM BLUE SOLID, CUT:

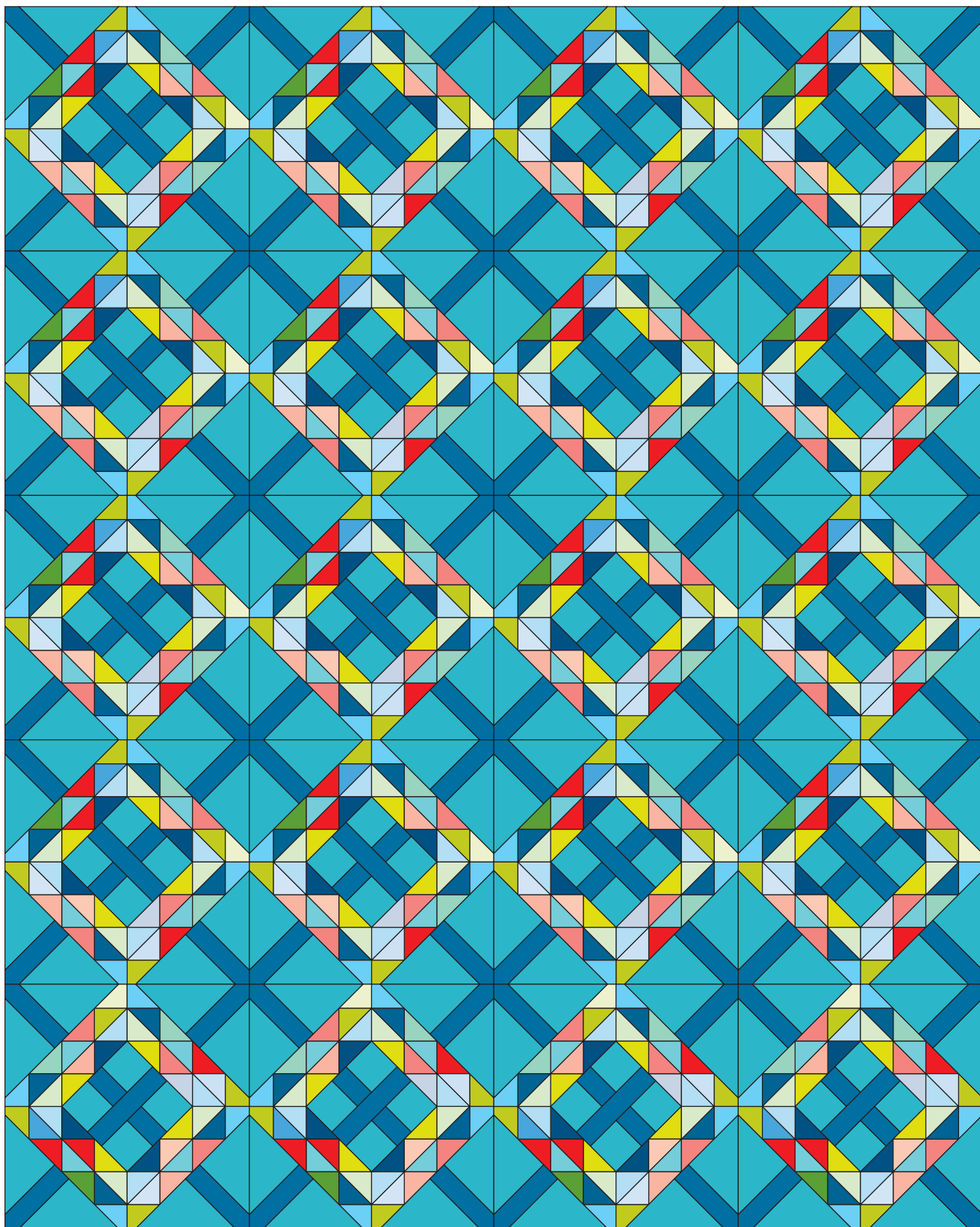
- 15 (10"-wide) strips. From strips, cut 60 (10") squares. Cut squares in half diagonally in both directions to make 240 quarter-square C triangles.
- 10 (3¼"-wide) strips for strip sets.

FROM DARK BLUE PRINT, CUT:

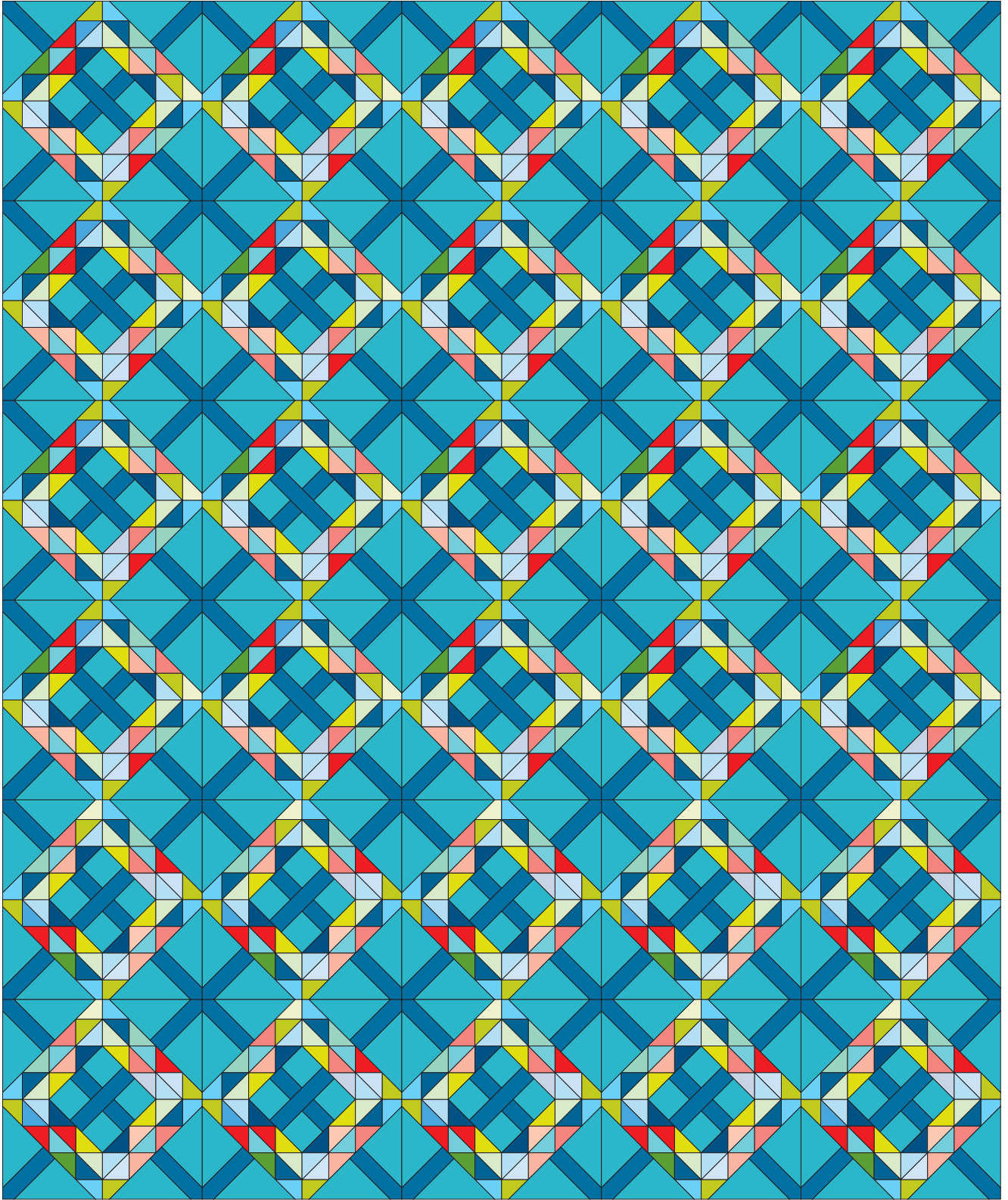
- 6 (8"-wide) strips. From strips, cut 120 (8" × 2") D rectangles.
- 2 (7½"-wide) strips. From strips, cut 30 (7½" × 2") A rectangles.
- 5 (2"-wide) strips for strip sets.

FROM ASSORTED PRINT FAT QUARTERS, CUT A TOTAL OF:

- 24 (2¼"-wide) strips for binding.
- 90 (4¾"-wide) strips. From strips, cut 360 (4¾") squares. Cut squares in half diagonally in both directions to make 1440 quarter-square B triangles.



Twin Quilt Top Assembly Diagram



Queen Quilt Top Assembly Diagram