

WEB BONUS LAP SIZE: BLUE DELFT



Adapted from a Design by
Cheryl Almgren Taylor

Skill Level INTERMEDIATE

Finished Quilt Size
54½" x 62½"

Note: Appliqué templates (at end
of pattern) are printed without seam
allowance.

**Number of Blocks and
Finished Size**
20 Flower Blocks 8" x 8"

Planning

This design was inspired by the colors of classic delftware pottery. To add interest to your version, use a wide variety of blue fabrics, from light to dark, for the assorted squares in the sashing and 2nd border. Use an accurate ¼" seam allowance throughout construction, so the pieced border fits well.

Stitch a larger, lap size version of this lovely quilt, which was featured in the March/April 2011 issue of [McCall's Quilting](http://McCallsQuilting.com).

Fabric Requirements

Medium blue texture and white/blue print (appliqué backgrounds)	1/2 yd. each
#1 white print and blue batik (flowers)	1 fat quarter* each
Yellow mottle (flower centers)	6" x 7" piece
Green texture (leaves)	1 fat quarter*
Light blue print and light blue batik (block corners)	5/8 yd. each
Assorted blue prints/textures (squares)	1 1/4-1 1/2 yds. total
Assorted white/blue prints/textures (squares)	1 1/4-1 1/2 yds. total
#2 white print (1st and 3rd borders)	1 1/8 yds.
Blue-on-blue print (binding)	3/4 yd.
Backing (piece widthwise)	3 5/8 yds.
Batting size	64" x 72"

*A fat quarter is an 18" x 20-22" cut of fabric.

Cutting Instructions

(cut in order listed)

Note: Cutting instructions for appliqué shapes are on templates at end of pattern.

☐ = cut in half diagonally

Medium blue texture and white/blue print—**cut from each:**

10 squares 7" x 7"

Light blue print and light blue batik—**cut from each:**

20 squares 4 7/8" x 4 7/8" ☐

Assorted blue prints/textures—**cut a total of:**

52 squares 2 1/2" x 2 1/2"

35 strips 1 1/2" x 20-22"

Assorted white/blue prints/textures—**cut a total of:**

52 squares 2 1/2" x 2 1/2"

35 strips 1 1/2" x 20-22"

#2 white print

*2 strips 2 1/2" x 52 1/2", pieced from 3 width of fabric (WOF) strips

*2 strips 1 1/2" x 46 1/2", pieced from 3 WOF strips

**4 strips 2 1/2" x 62", pieced from 8 WOF strips

Blue-on-blue print

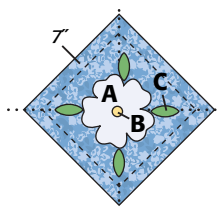
7 strips 2 1/2" x WOF (binding)

*Border strips are cut to exact length.

**Border strips include extra length for trimming.

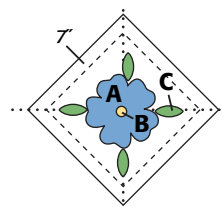
Making the Blocks

1 Note: Appliqué background squares are cut oversized to allow for shrinkage during appliqué. Finger-press medium blue texture 7" square in half diagonally twice; use folds as placement guide. Referring to **Diagram I-A**, position A-C in alphabetical order, keeping in mind that square will be trimmed to 6 1/8" x 6 1/8" (finished size is 5 5/8" square). Appliqué in place. **Trim** to 6 1/8" square. Make 10. In same manner, make and trim 10 with white/blue print background squares (**Diagram I-B**).



Make 10; trim to 6 1/8" square

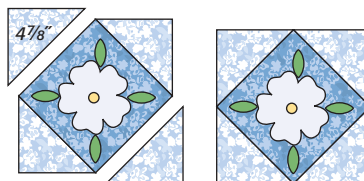
Diagram I-A



Make 10; trim to 6 1/8" square

Diagram I-B

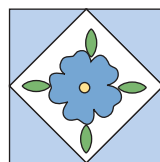
2 Stitch 4 light blue print half-square triangles to trimmed medium blue appliqué square to make Flower Block (**Diagram II-A**). Make 10.



Make 10

Diagram II-A

In same manner, sew light blue batik triangles to white/blue appliqué squares to make remaining 10 blocks (**Diagram II-B**).

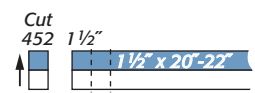


Make 10

Diagram II-B

Piecing the Sashing Units

3 Referring to **Diagram III-A**, sew together 1 each assorted blue and assorted white/blue 20-22" strips to make strip set. Make 35 total. Press in direction of arrow. Cut into 452 segments 1 1/2" wide.



Make 35 total
Diagram III-A

4 Sew 2 assorted segments together to make sashing post (**Diagram III-B**). Make 30 total.



Make 30 total

Diagram III-B

Sew 8 segments together to make sashing strip (**Diagram III-C**). Make 24 total. Make 25 total sashing strips of second arrangement (**Diagram III-D**).



Make 24 total
Diagram III-C



Make 25 total
Diagram III-D

Assembling the Quilt Top

Note: Refer to **Assembly Diagram** for following steps.

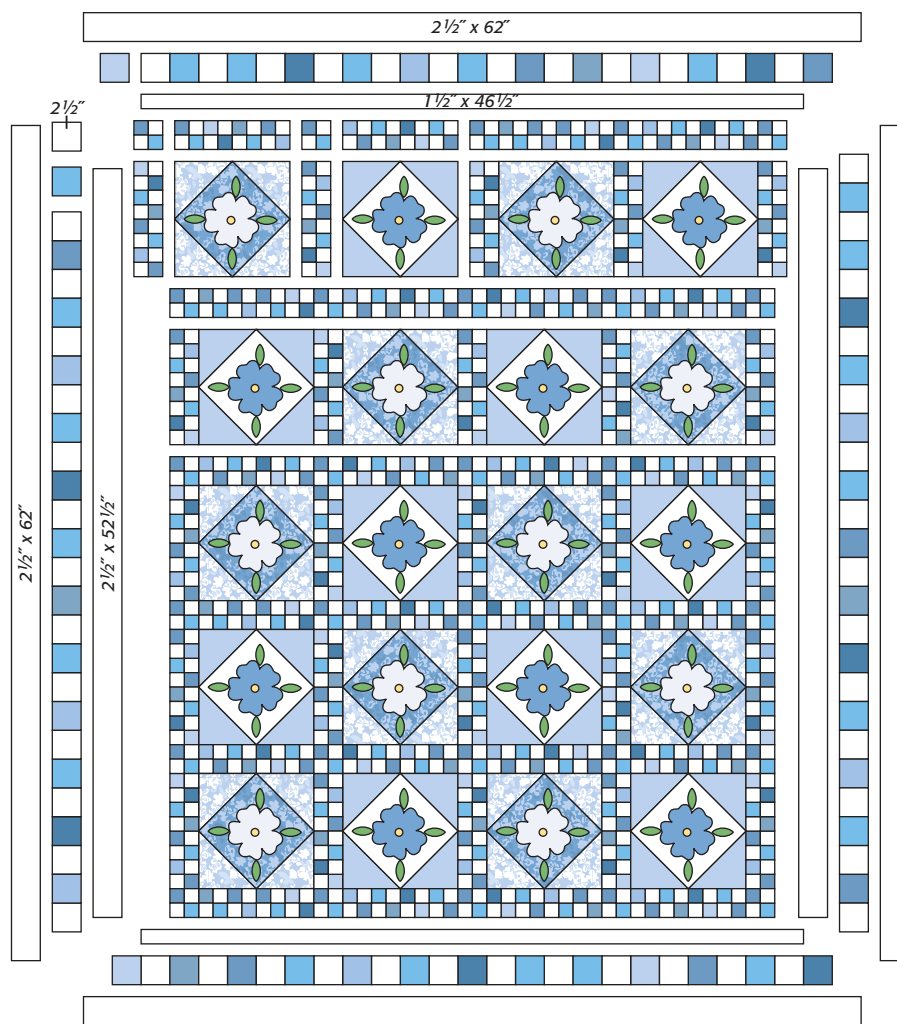
- 5 Watching placement of blue squares, stitch 6 sashing rows using 5 sashing posts and 4 sashing strips A each. Sew 5 block rows using 5 sashing strips B and 4 blocks each. Stitch rows together.
- 6 Sew #2 white print 52½" strips to sides of quilt center. Sew #2 white 46½" strips to top and bottom.
- 7 To make side pieced border strip, stitch together 14 assorted white/blue and 13 assorted blue 2½" squares, alternating. Make 2 total. Sew to sides of quilt. To make top/bottom strip, stitch together 13 assorted blue and 12 assorted white squares. Make 2 total. Sew to top and bottom.
- 8 Sew #2 white 62" strips to sides; trim even with top/bottom. Sew 62" strips to top/bottom; trim even with sides.

Quilting and Finishing

- 9 Layer, baste, and quilt. Bind with blue-on-blue print.

Designer Information

To see more of Cheryl's designs, visit her website at atimetosewquilts.com.



Assembly Diagram

WEB BONUS LAP SIZE: BLUE DELFT TEMPLATES

