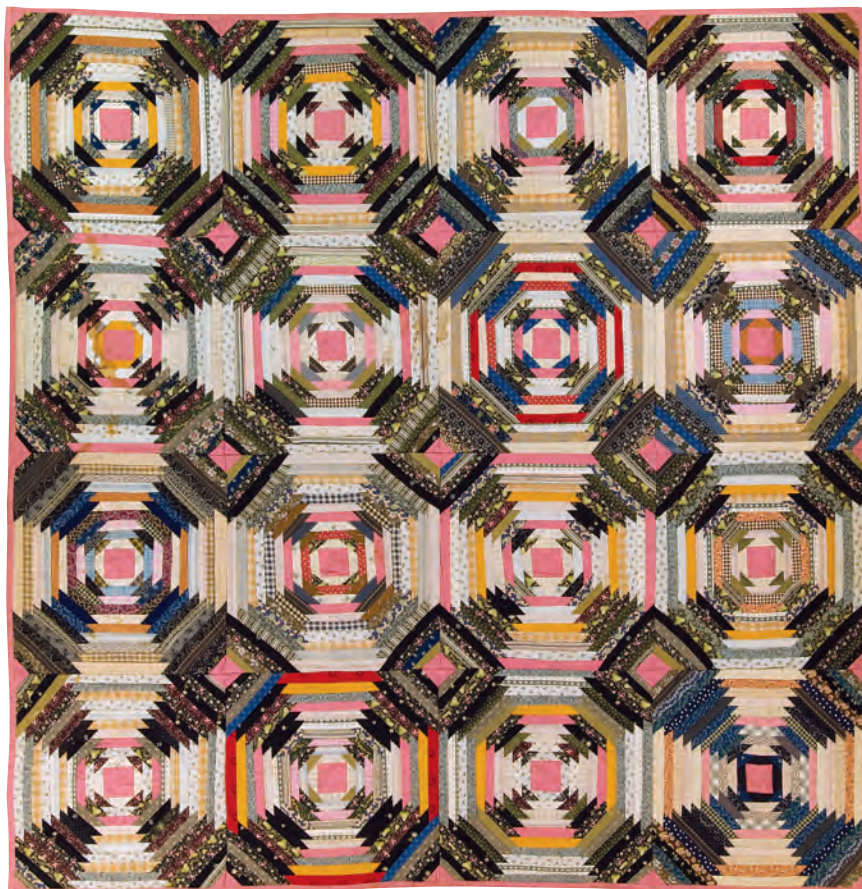


# Pineapple Log Cabin

The Pineapple block is one of the most interesting traditional patterns. A strong contrast between fabrics is key to developing its various emerging designs.



**Finished Size:**

71" × 71"

**Finished Blocks:**

16 (17<sup>3</sup>/<sub>4</sub>" blocks)

---

## MATERIALS

Approximately 5 yards total assorted light print scraps in white, beige, pink, tan, gold, and gray

Approximately 5½ yards total assorted dark print scraps in black, brown, beige, and blue

1 yard pink print for blocks and binding

Paper for foundation piecing

4½ yards backing fabric

Full-size quilt batting

Quilt from the collection of **INTERNATIONAL QUILT STUDY CENTER & MUSEUM**  
**2008.040.0085.**



International Quilt Study Center & Museum

## CUTTING

Measurements include ¼" seam allowances. Patterns for foundation are on pages 3–8. Pieces and strips for foundation piecing are cut oversize.

### FROM LIGHT PRINTS, CUT:

- 1½"-wide strips for foundation piecing.

### FROM DARK PRINTS, CUT:

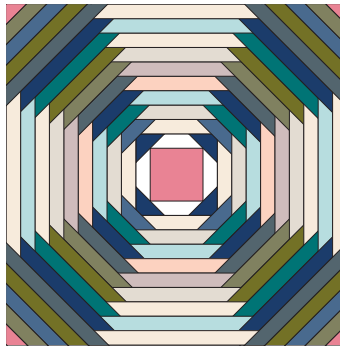
- 1½"-wide strips for foundation piecing.

### FROM PINK PRINT, CUT:

- 2 (3½"-wide) strips. From strips, cut 16 (3½") center squares for foundation piecing.
- 2 (2½"-wide) strips. From strips, cut 32 (2½") squares. Cut squares in half diagonally to make 64 half-square triangles for foundation piecing.
- 8 (2¼"-wide) strips for binding.

## BLOCK ASSEMBLY

1. Trace or photocopy 16 of each Block foundation from patterns on pages 3–8.
2. Referring to Block Foundation on pages 3–8 and *Block Diagram*, foundation piece blocks in numerical order. Make 16 blocks.



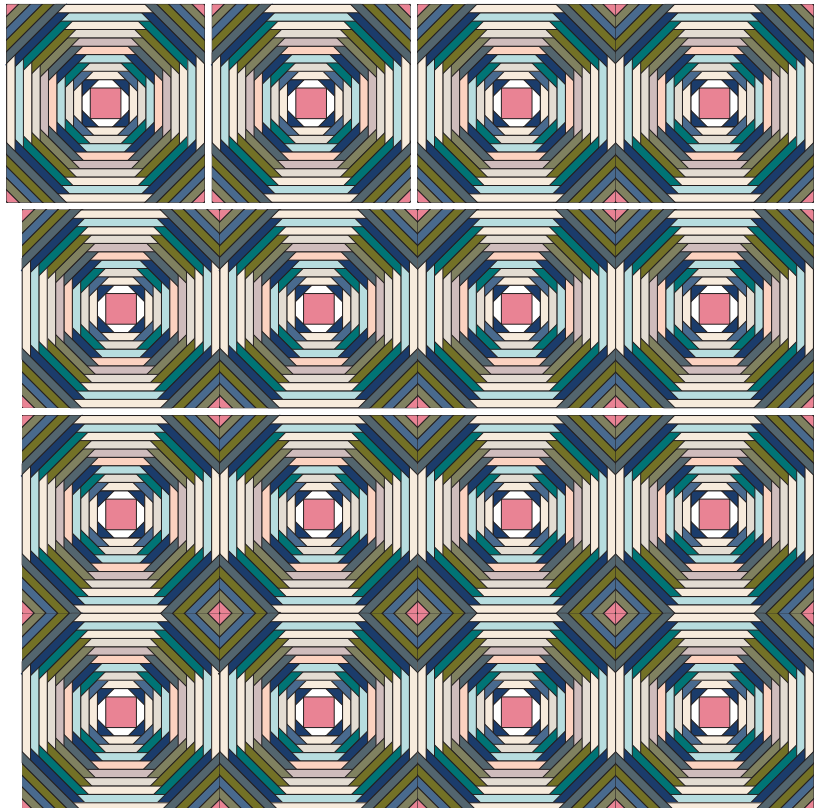
Block Diagram

## QUILT ASSEMBLY

1. Lay out blocks as shown in *Quilt Top Assembly Diagram*.
2. Join blocks into rows; join rows to complete quilt top.

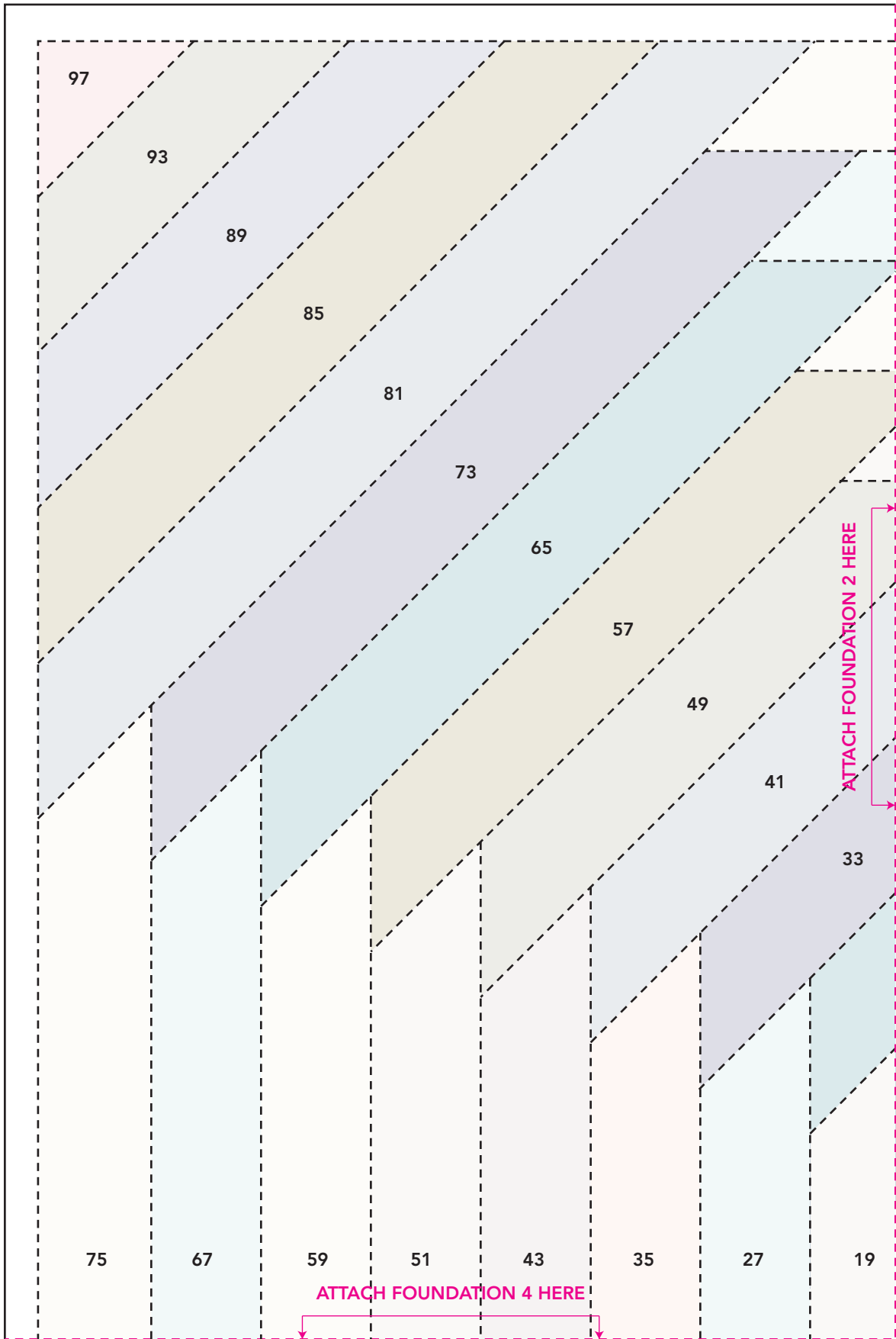
## FINISHING

1. Divide backing into 2 (2¼-yard) lengths. Cut 1 piece in half lengthwise to make 2 narrow panels. Join 1 narrow panel to each side of wider panel; press seam allowances toward narrow panels.
2. Layer backing, batting, and quilt top; baste. Quilt as desired.
3. Join 2¼"-wide pink print strips into 1 continuous piece for straight-grain French-fold binding. Add binding to quilt.

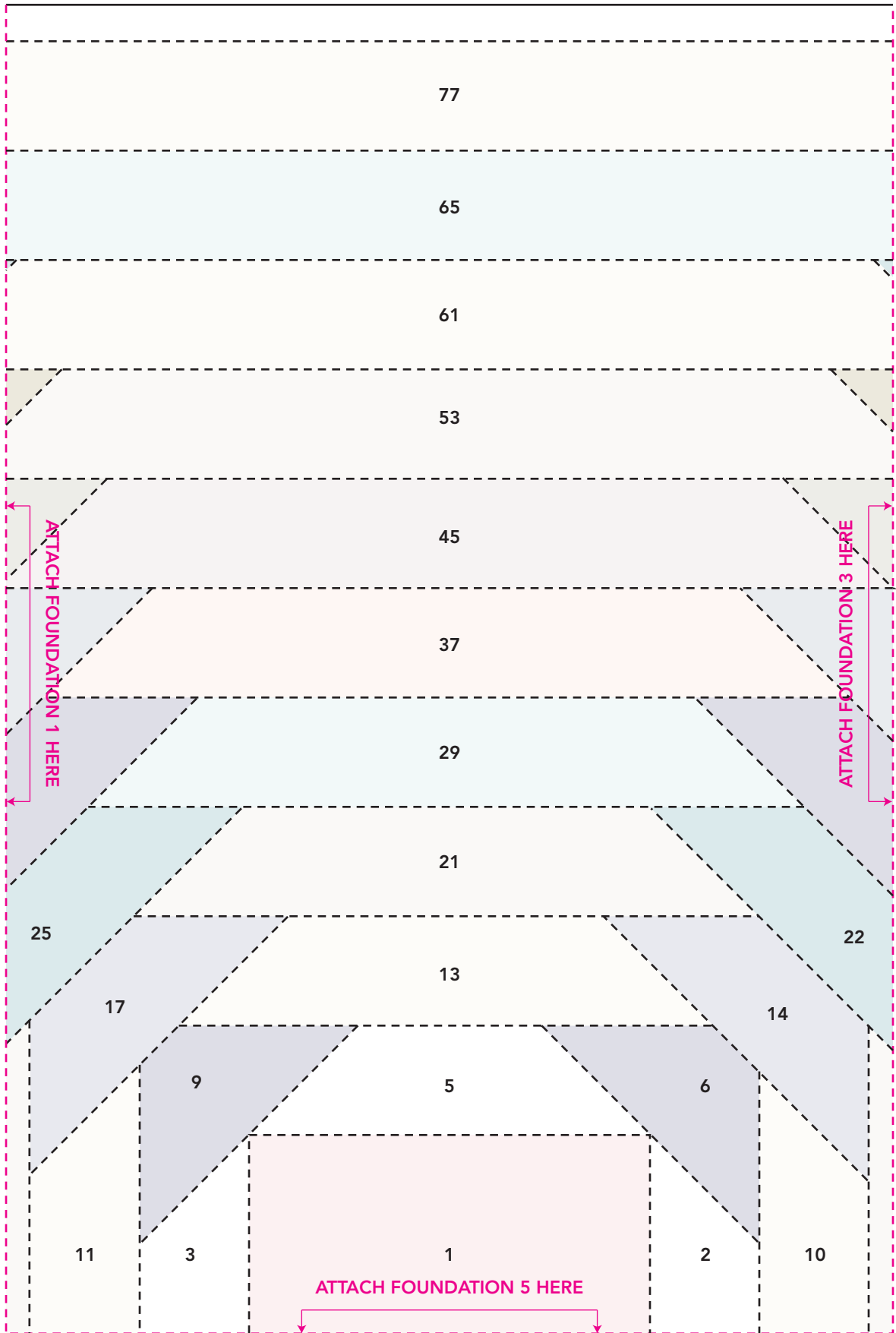


Quilt Top Assembly Diagram

FOUNDATION 1



FOUNDATION 2



FOUNDATION 3

