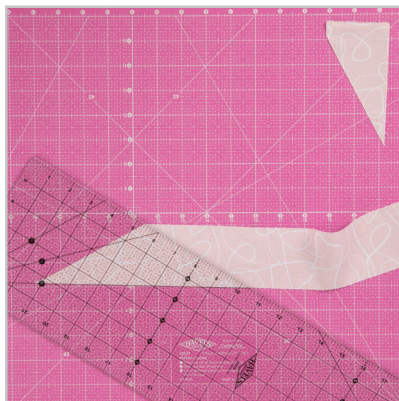


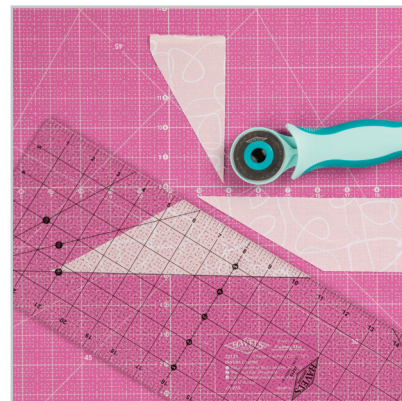
30° triangles are a common shape, used frequently for diamond rectangle units and setting triangles.



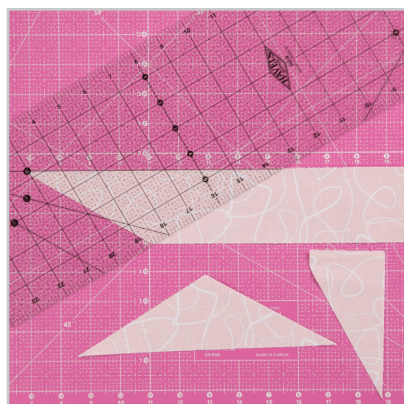
1. Begin with strip cut to desired height of triangle, plus $\frac{7}{8}$ " for seam allowance. Place ruler on strip, aligning 30° mark on ruler with one long edge of strip, and trim.



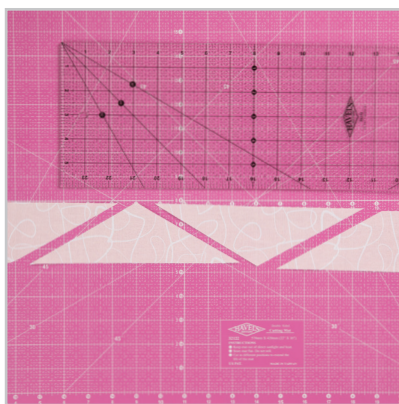
2. Re-position strip and align 30° mark on ruler with bottom edge of strip to create triangle.



3. Cut to make triangle.



4. Align 30° mark on ruler along top edge of strip.



5. Cut to make another triangle. Continue aligning 30° mark as described to cut remaining strip into triangles.

Products used: Havel's Self-Healing Cutting Mat, Havel's 45mm Rotary Cutter, and Havel's 6" x 24" Fabric Ruler.
Fabric from Abstract Collage collection by Ampersand for Paintbrush Studio Fabrics.



Watch this Sew Easy™ Lesson at [QuiltingCompany.com/Sew-Easy-Cutting-30-Degree-Triangles](https://www.QuiltingCompany.com/Sew-Easy-Cutting-30-Degree-Triangles)