

*My Doll
My Style*

SEWING FUN FASHIONS
FOR YOUR 18-INCH DOLL

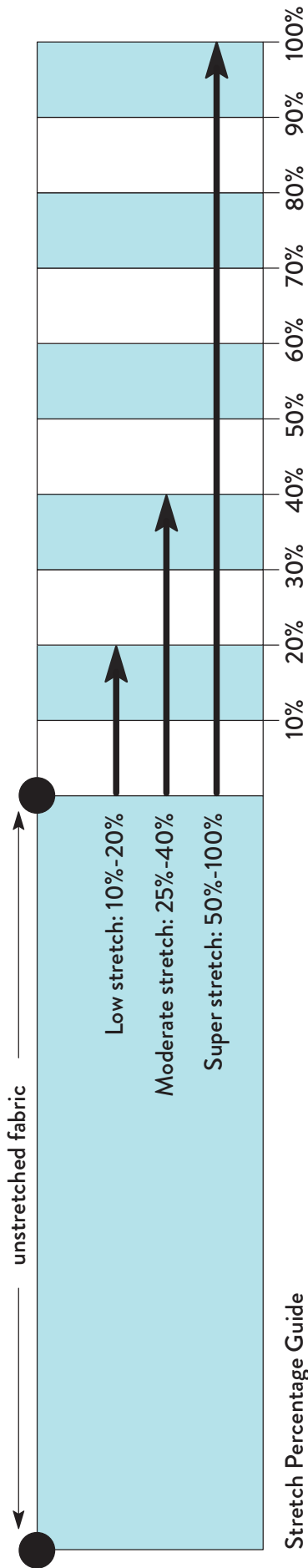
Anna Allen

TEMPLATES

Read Me!

- 1** Print all pattern pieces at 100% with no scaling unless otherwise indicated on an individual pattern.
- 2** Some pattern pieces have specific instructions. Read the templates carefully before you begin.
- 3** Some of the patterns are split into two sections that need to be joined together before you cut out the fabric. Line up the edges as indicated on the pattern and tape the pattern pieces together on the front and back edges.
- 4** For the best results and helpful details in working with the pattern pieces refer to *Cutting Accurately and Transferring Pattern Markings* in chapter 1 of the book.

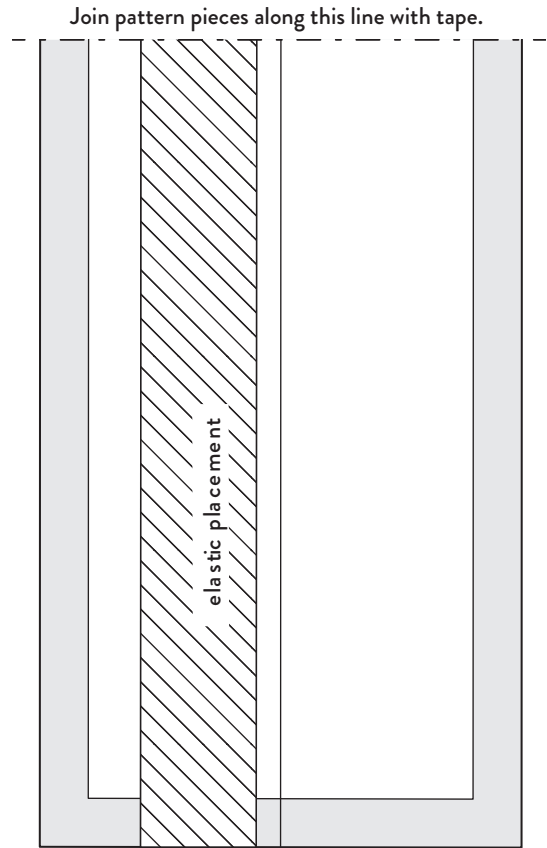
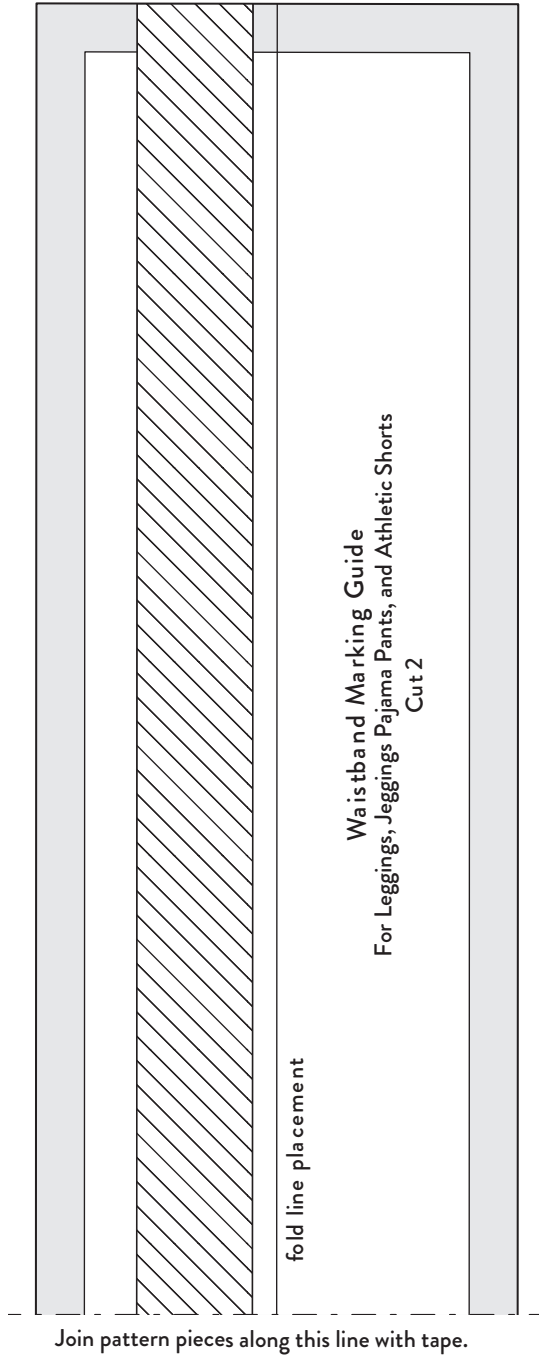
Have Fun!



Stretch Percentage Guide

Print at 100% with no scaling.
 This square should measure
 1" (2.5 cm) when printed.

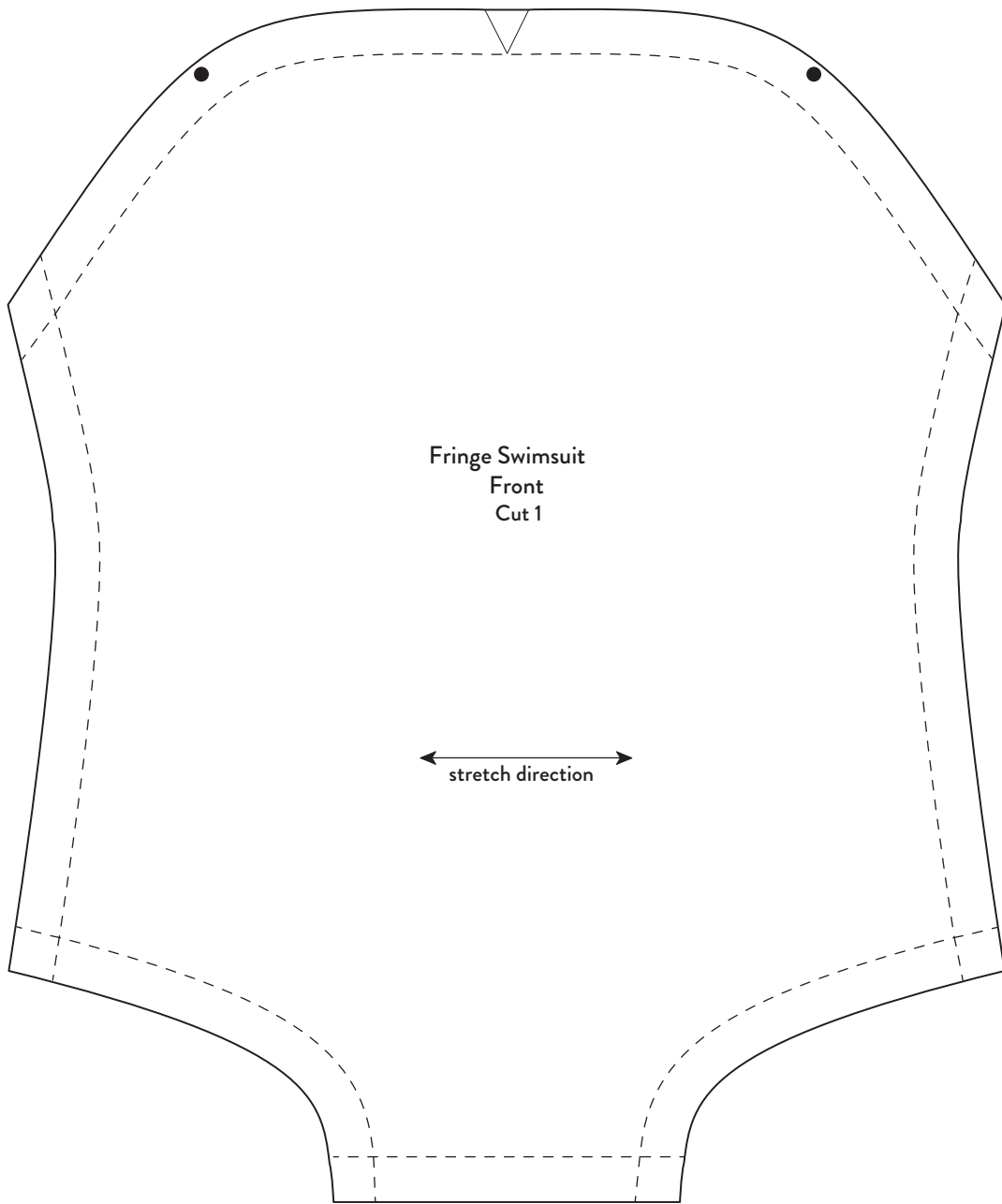




Print at 100% with no scaling.
This square should measure
1" (2.5 cm) when printed.

My Doll, My Style.
Copyright © 2018 by Anna Allen.



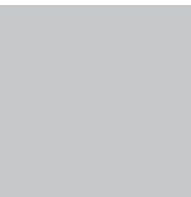


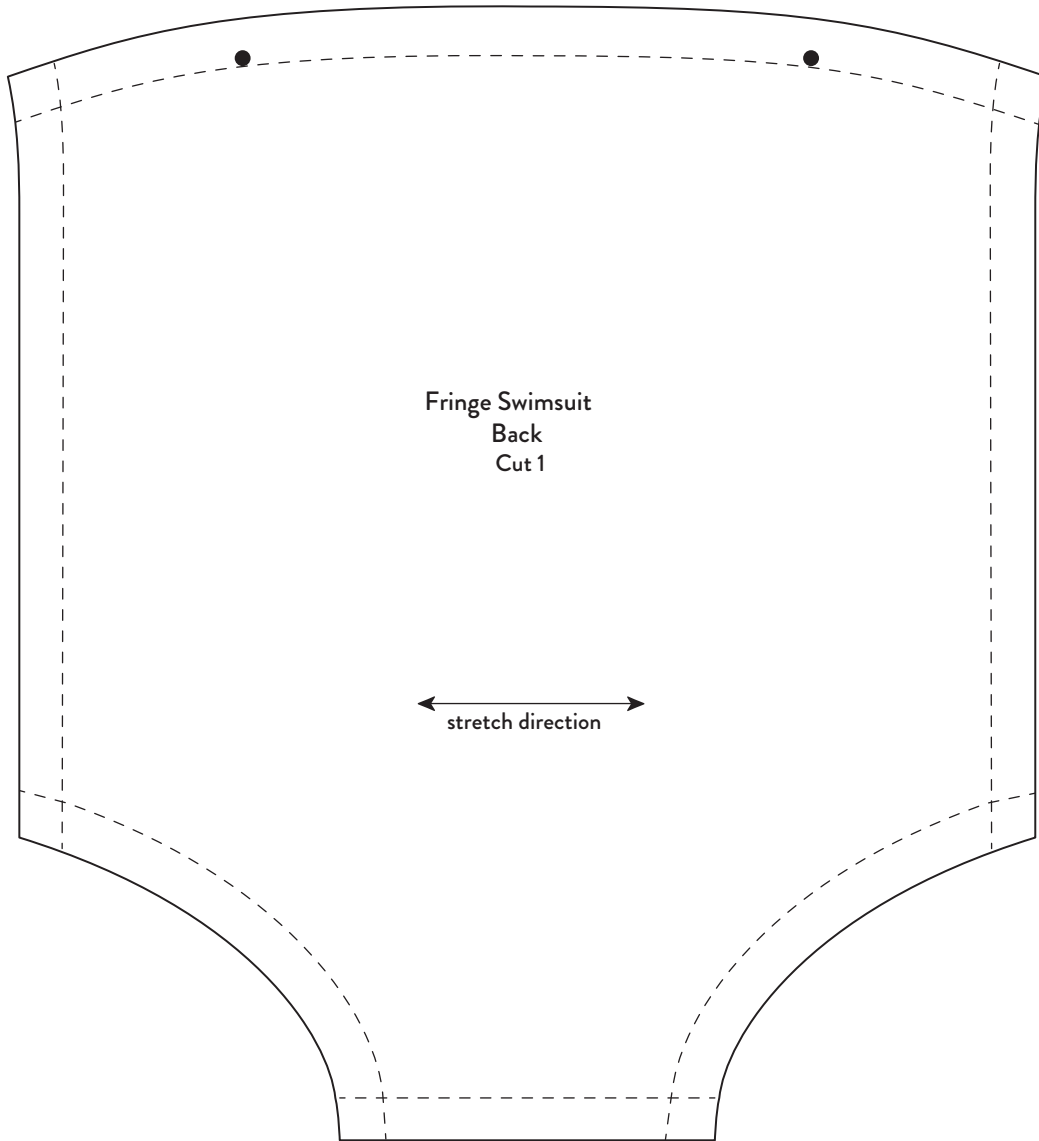
Fringe Swimsuit
Front
Cut 1

← stretch direction →

Print at 100% with no scaling.
This square should measure
1" (2.5 cm) when printed.

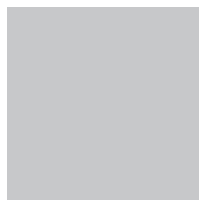
My Doll, My Style.
Copyright © 2018 by Anna Allen.

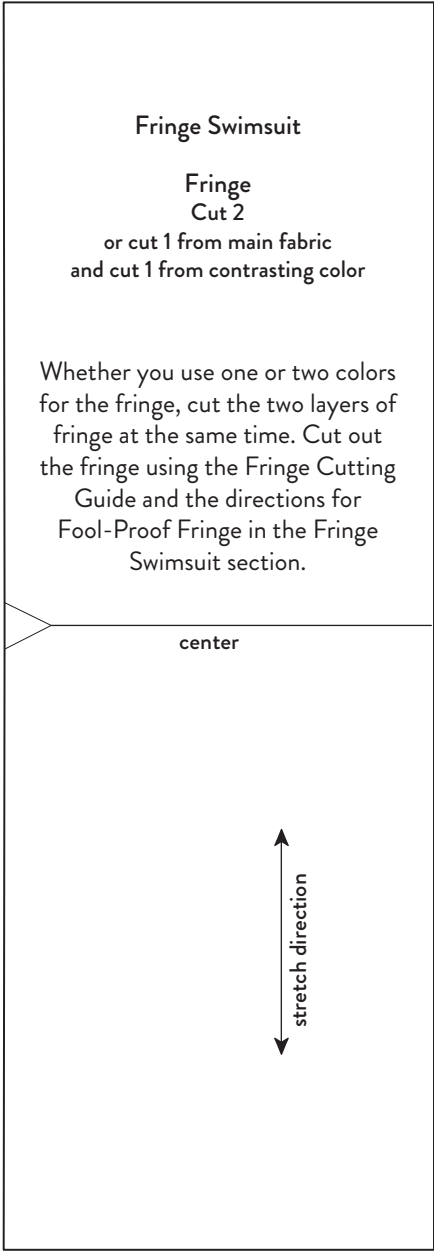
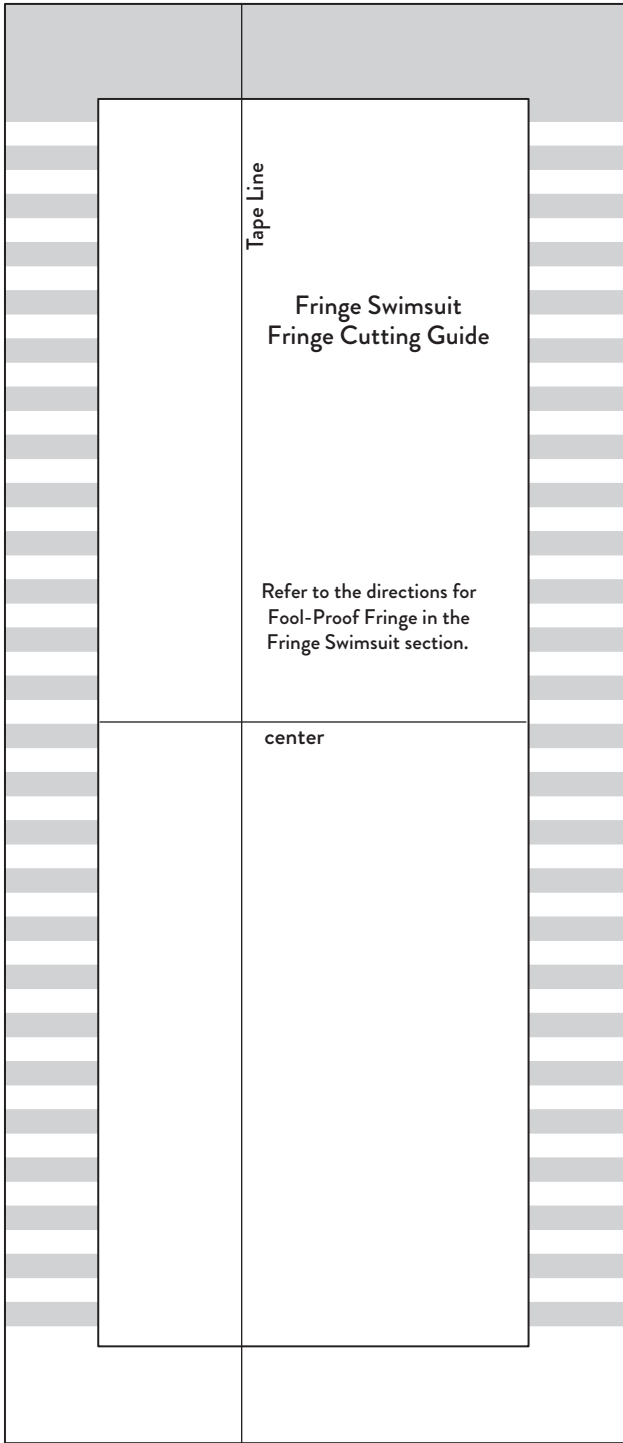




Print at 100% with no scaling.
This square should measure
1" (2.5 cm) when printed.

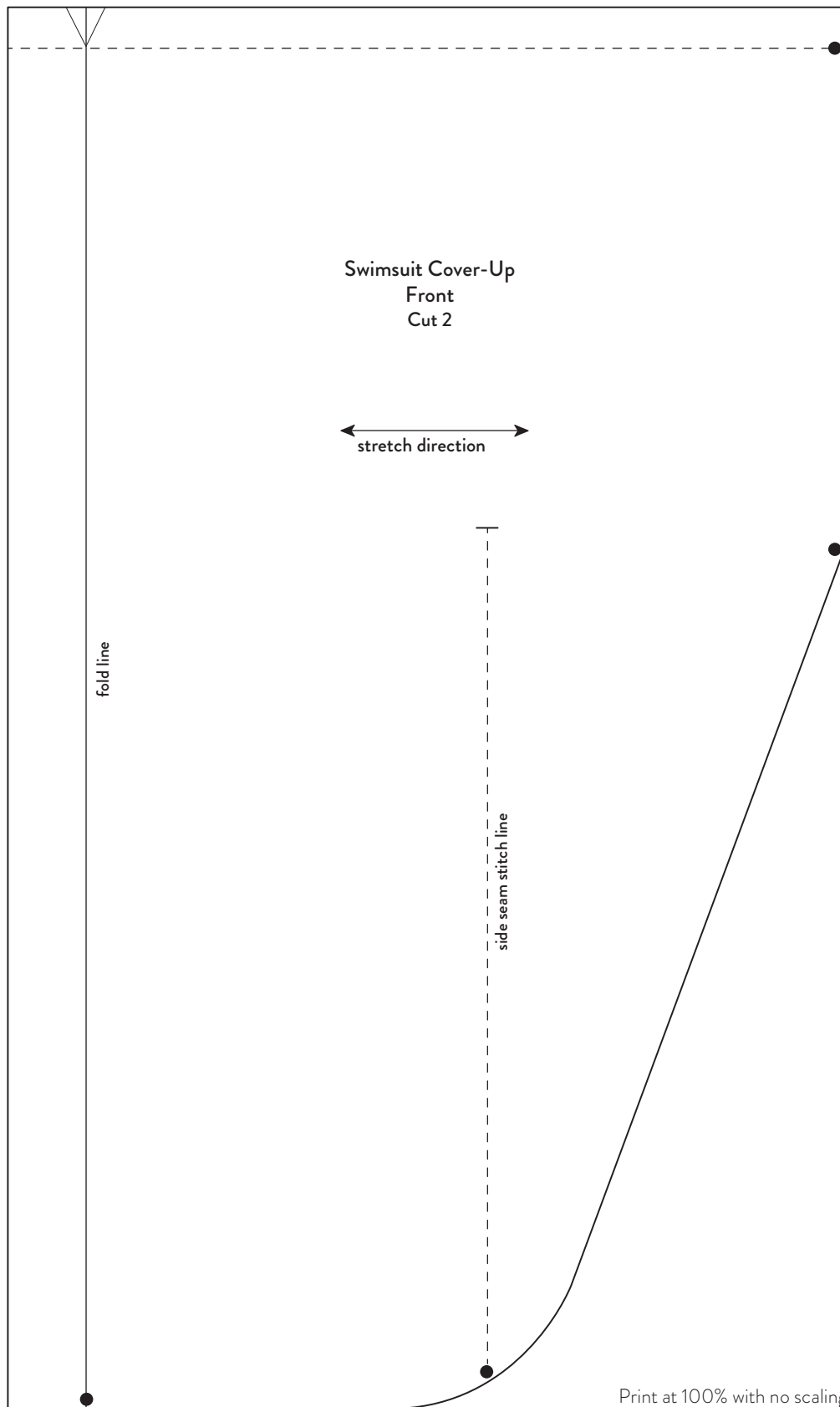
My Doll, My Style.
Copyright © 2018 by Anna Allen.





Print at 100% with no scaling.
This square should measure
1" (2.5 cm) when printed.





Swimsuit Cover-Up
Front
Cut 2

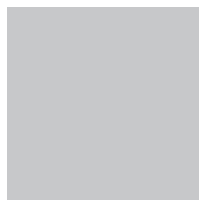
stretch direction

fold line

side seam stitch line

Print at 100% with no scaling.
This square should measure
1" (2.5 cm) when printed.

My Doll, My Style.
Copyright © 2018 by Anna Allen.





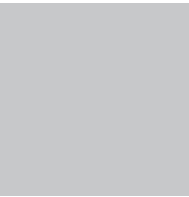
Swimsuit Cover-Up
Back
Cut 2

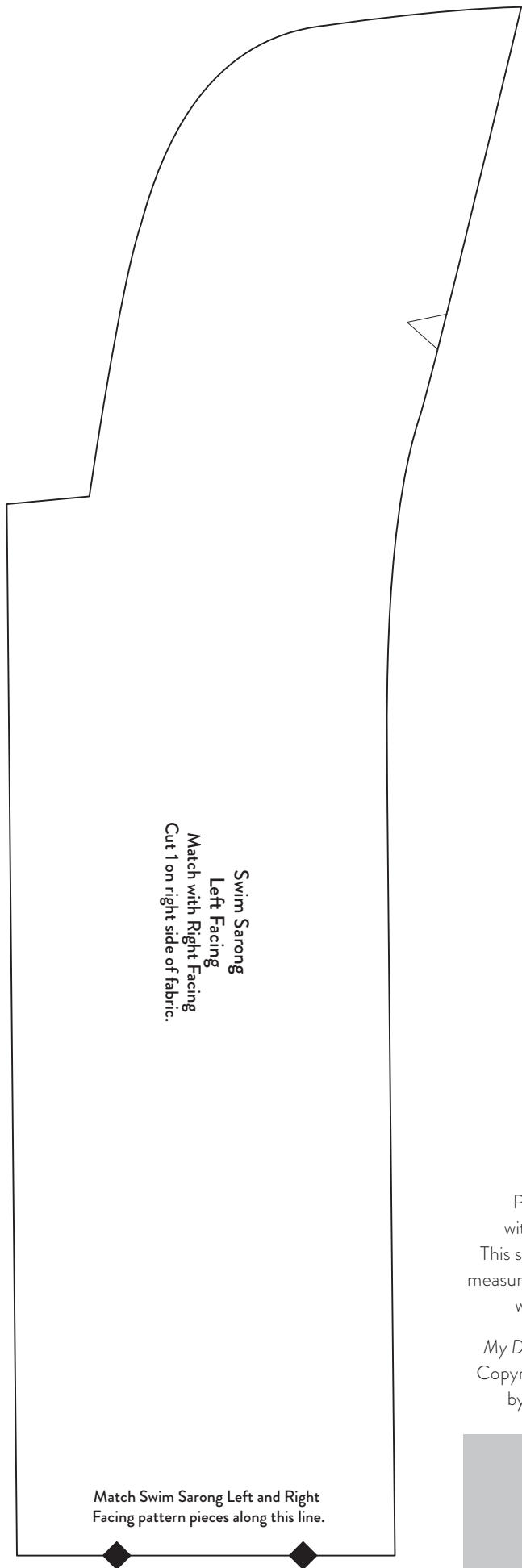
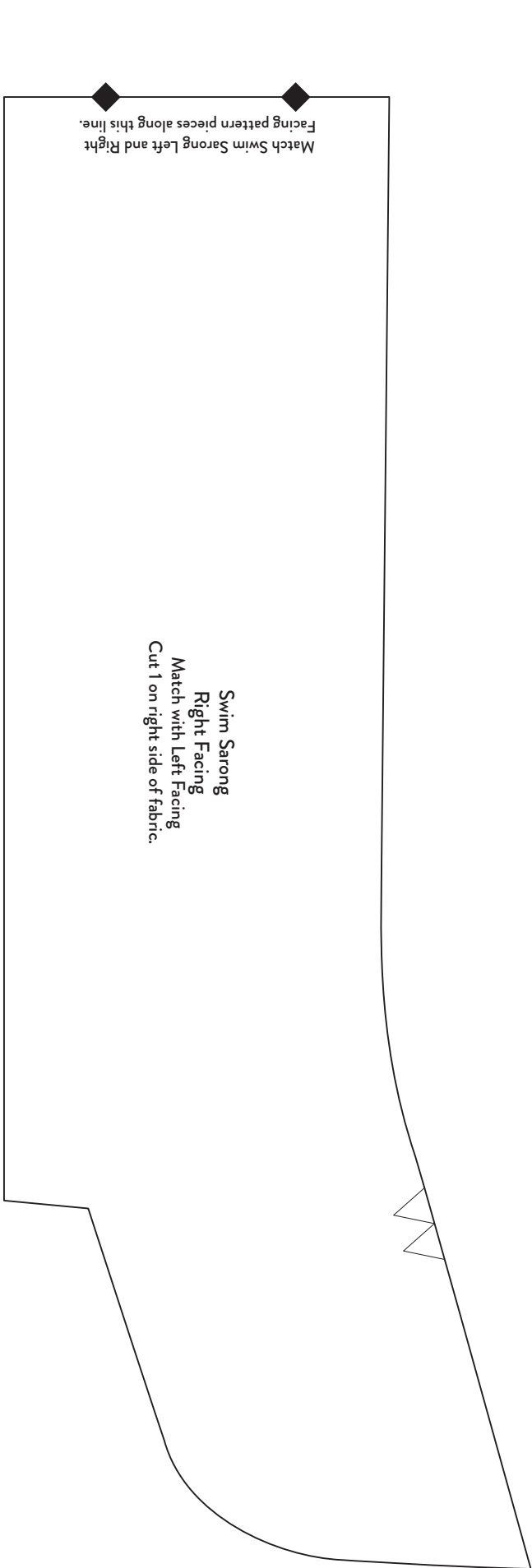
← stretch direction →

center back

Print at 100% with no scaling.
This square should measure
1" (2.5 cm) when printed.

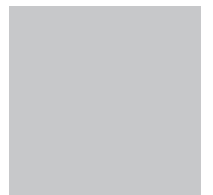
My Doll, My Style.
Copyright © 2018 by Anna Allen.





Print at 100%
with no scaling.
This square should
measure 1" (2.5 cm)
when printed.

My Doll, My Style.
Copyright © 2018
by Anna Allen.



Match Sarong Left and Right pattern pieces along this line and connect with tape.

Swim Sarong
Sarong Left
Match with Sarong Right
Cut 1 on wrong side of fabric.

Print at 100% with no scaling.
This square should measure
1" (2.5 cm) when printed.

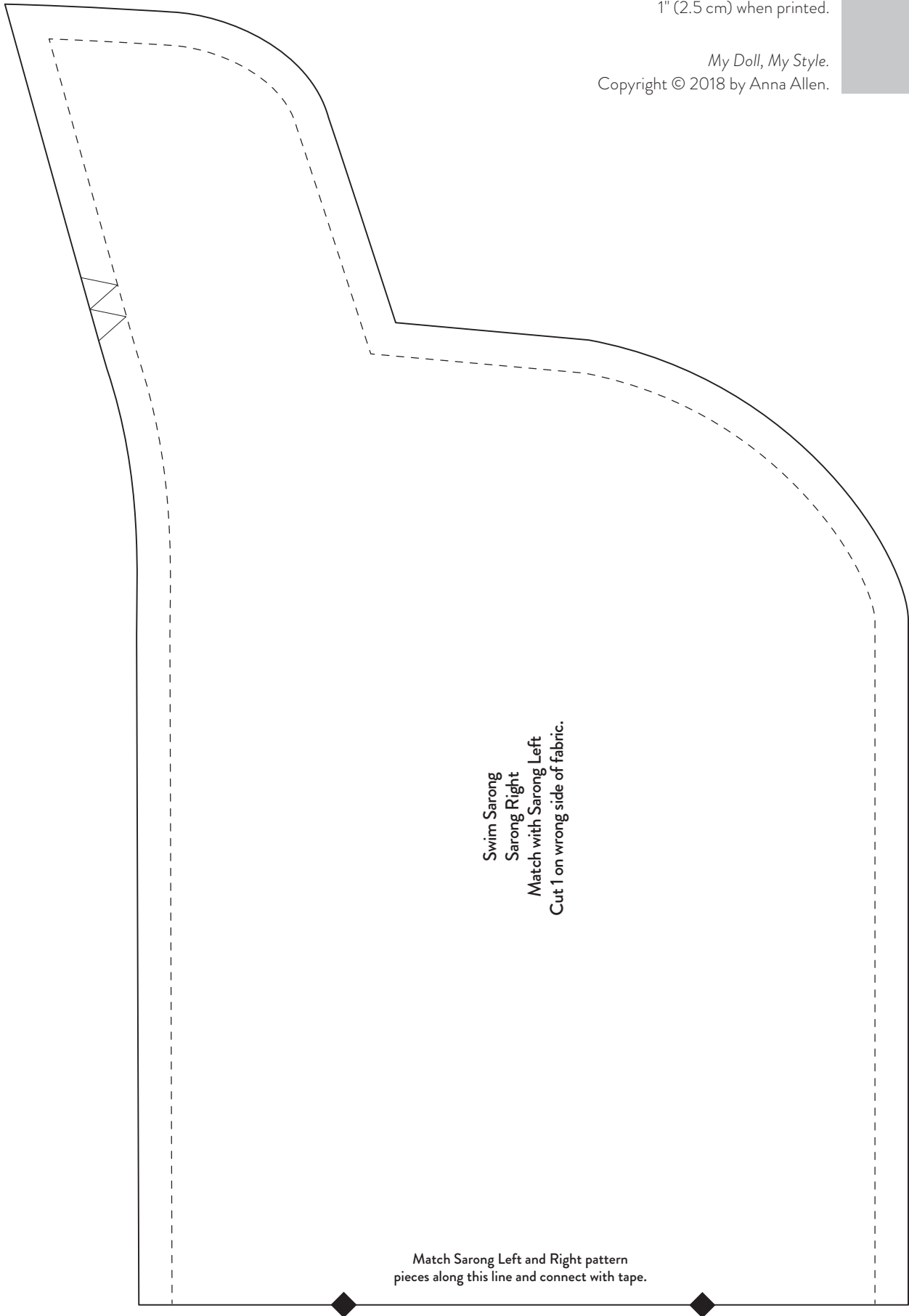
My Doll, My Style.
Copyright © 2018 by Anna Allen.



Print at 100% with no scaling.
This square should measure
1" (2.5 cm) when printed.

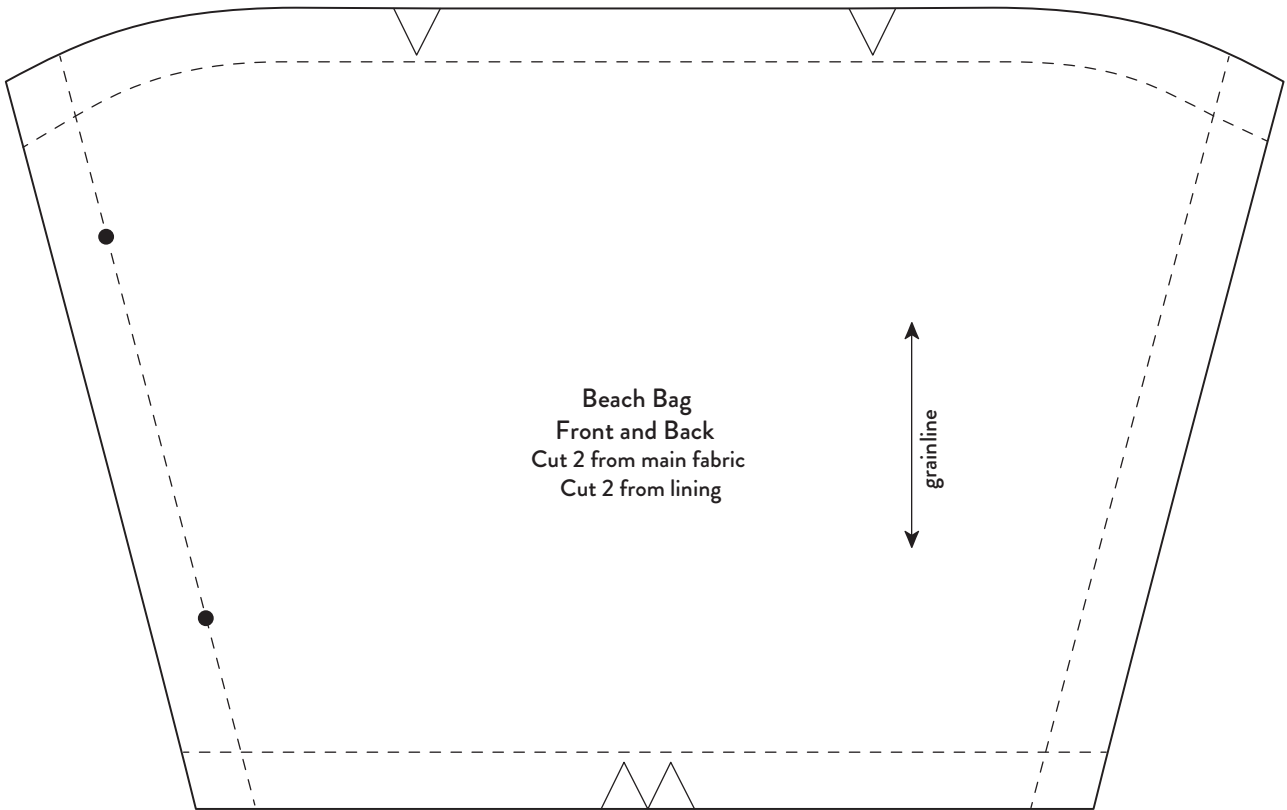
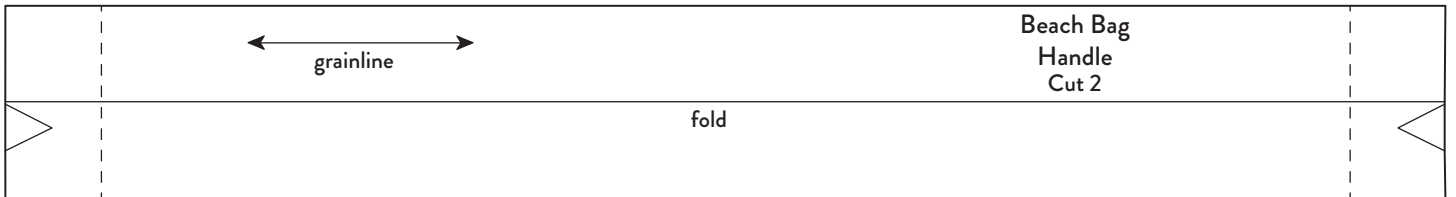
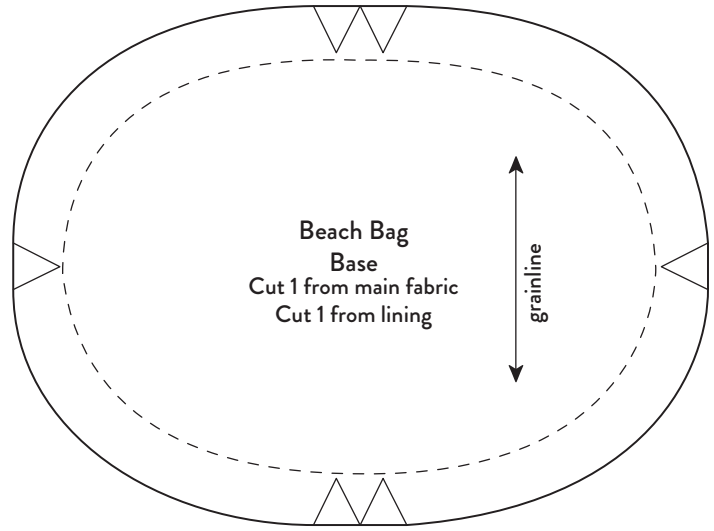


My Doll, My Style.
Copyright © 2018 by Anna Allen.



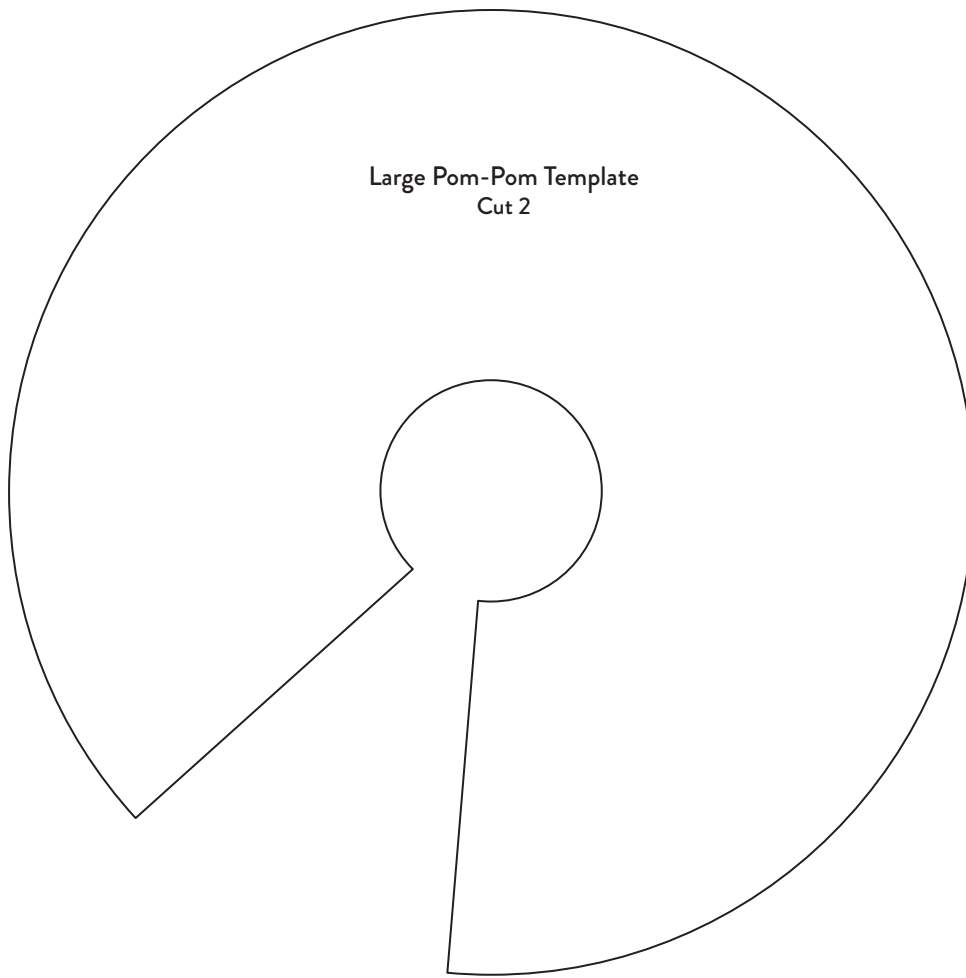
Swim Sarong
Sarong Right
Match with Sarong Left
Cut 1 on wrong side of fabric.

Match Sarong Left and Right pattern
pieces along this line and connect with tape.

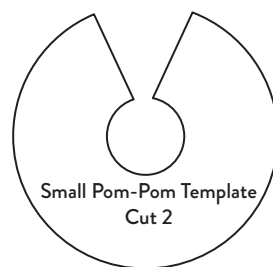


Print at 100% with no scaling.
 This square should measure
 1" (2.5 cm) when printed.



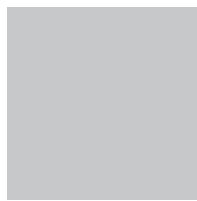


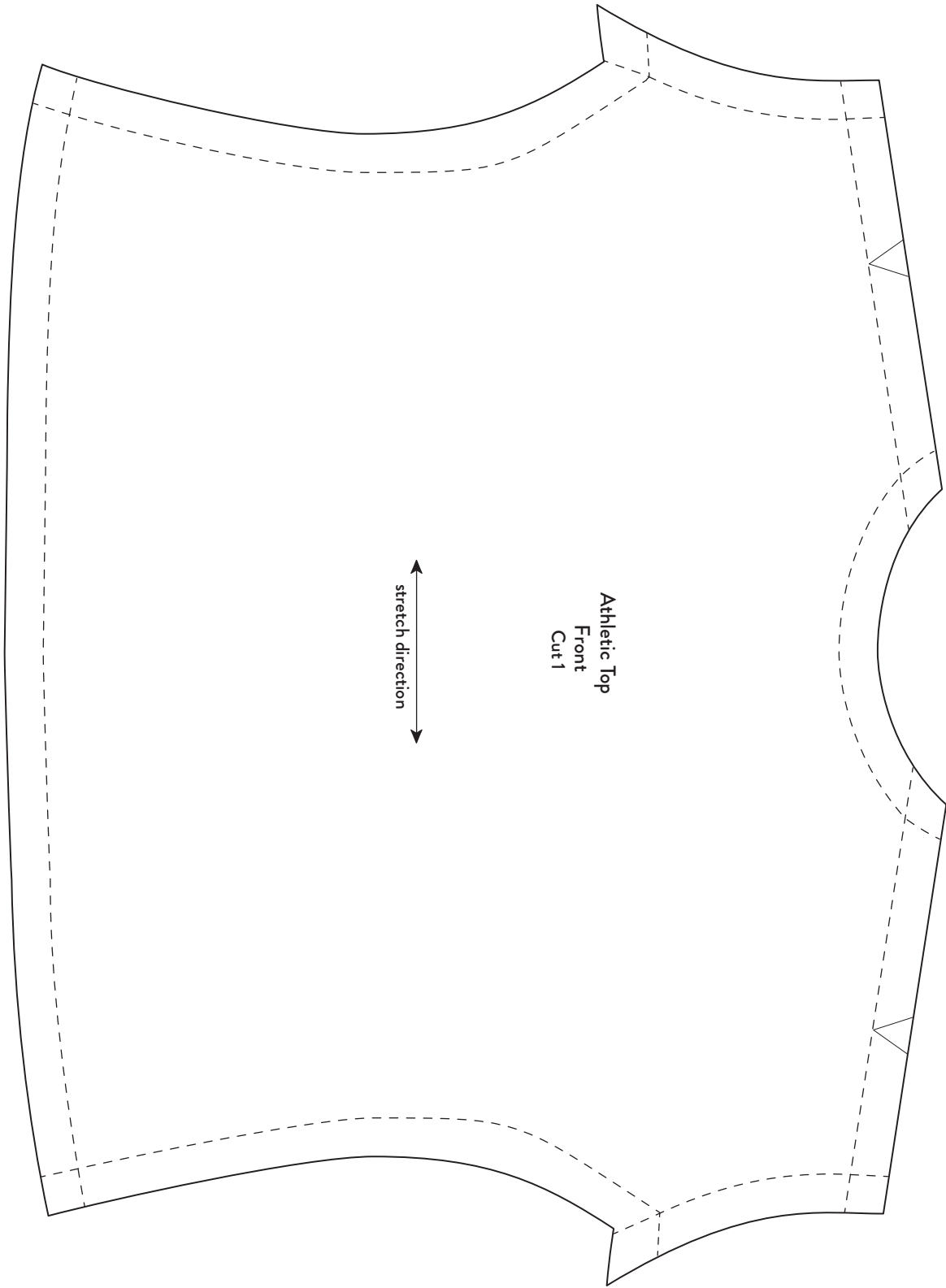
Large Pom-Pom Template
Cut 2



Small Pom-Pom Template
Cut 2

Print at 100% with no scaling.
This square should measure
1" (2.5 cm) when printed.





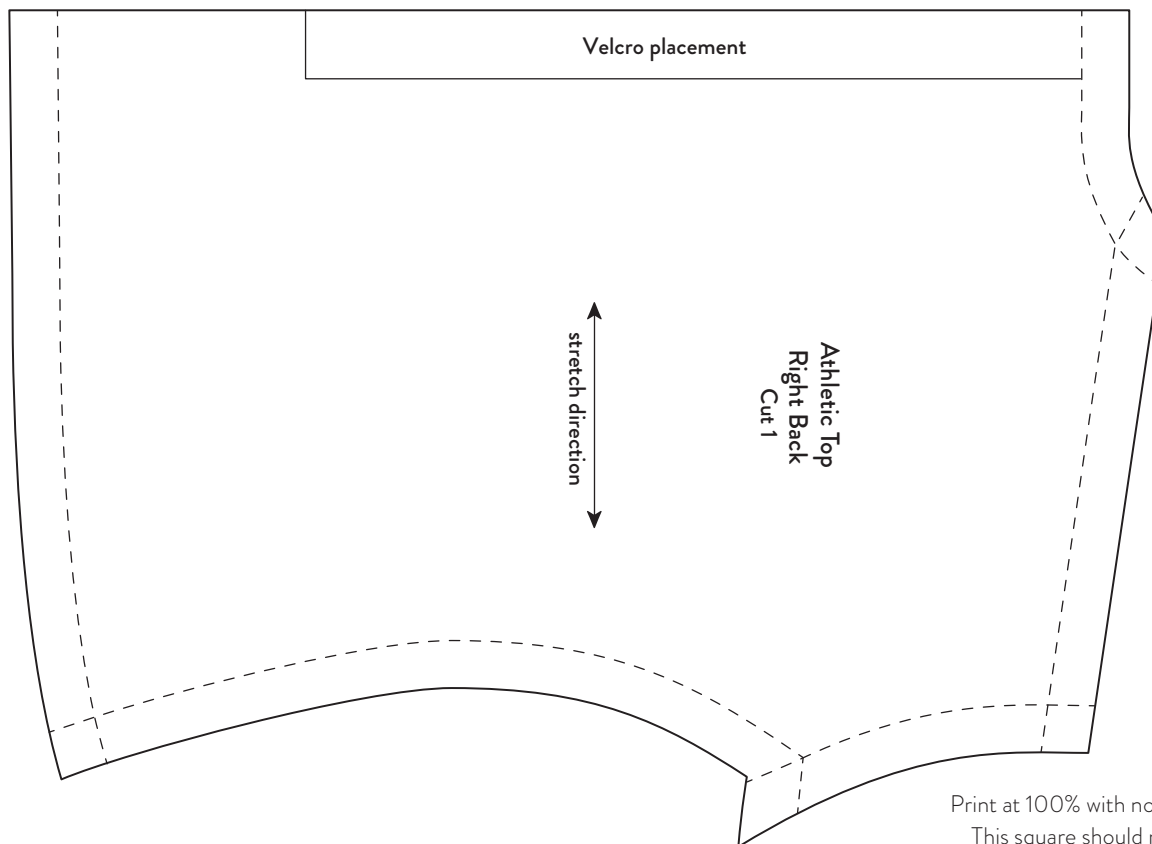
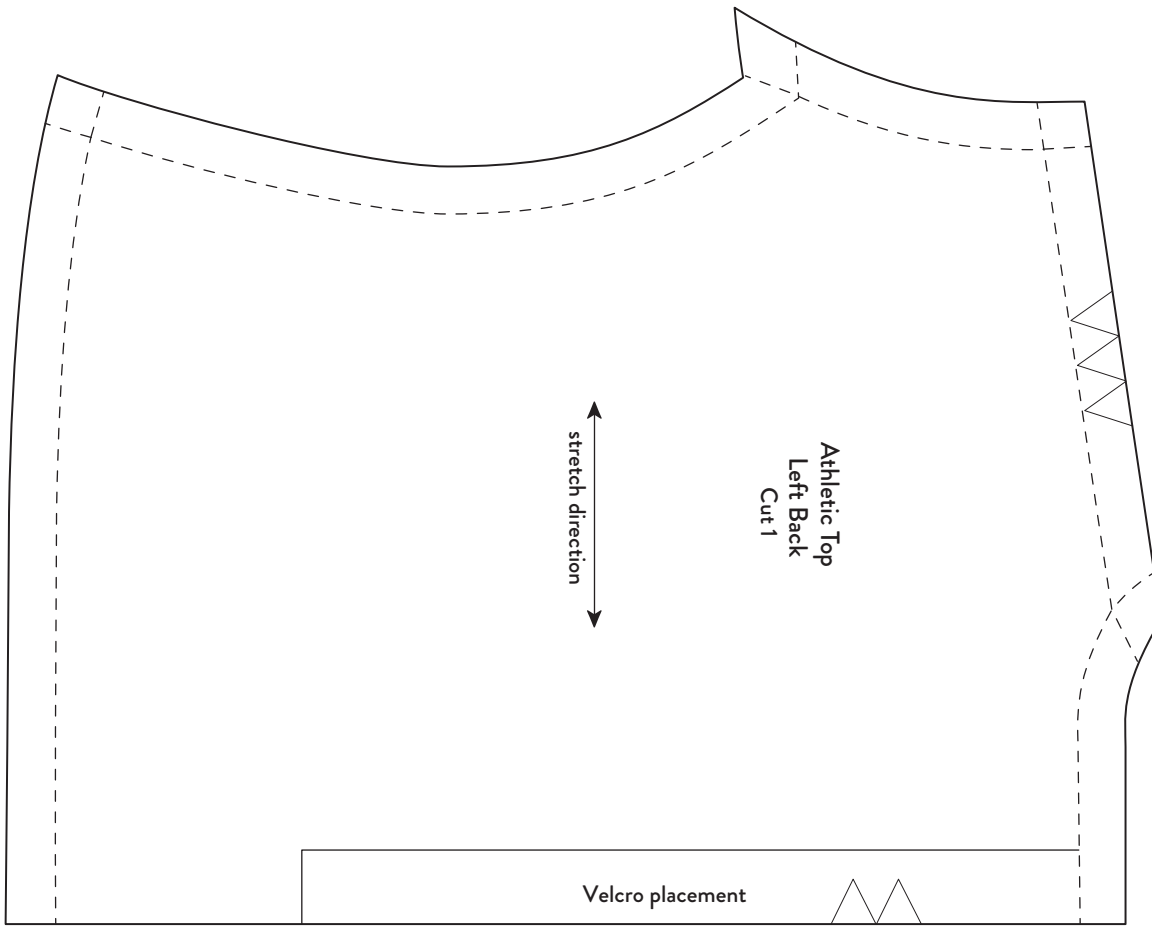
Athletic Top
Front
Cut 1

stretch direction

Print at 100% with no scaling.
This square should measure
1" (2.5 cm) when printed.

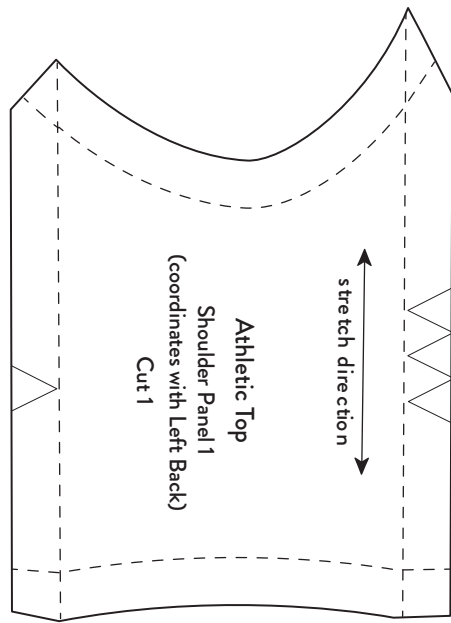
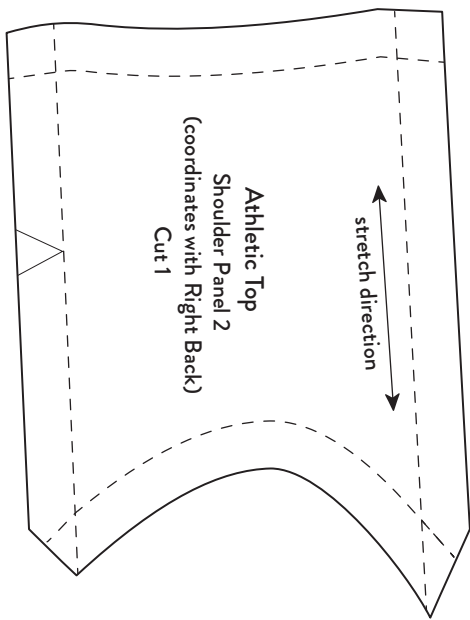
My Doll, My Style.
Copyright © 2018 by Anna Allen.





Print at 100% with no scaling.
This square should measure
1" (2.5 cm) when printed.



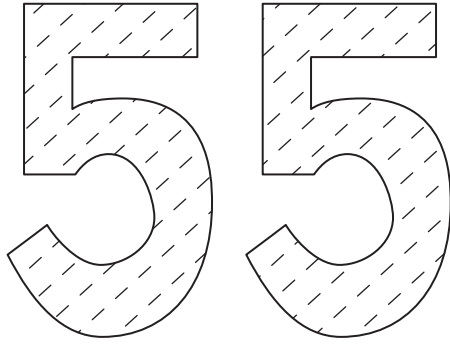


Print at 100% with no scaling.
This square should measure
1" (2.5 cm) when printed.

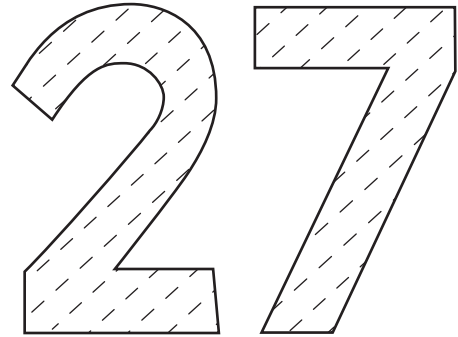
My Doll, My Style.
Copyright © 2018 by Anna Allen.



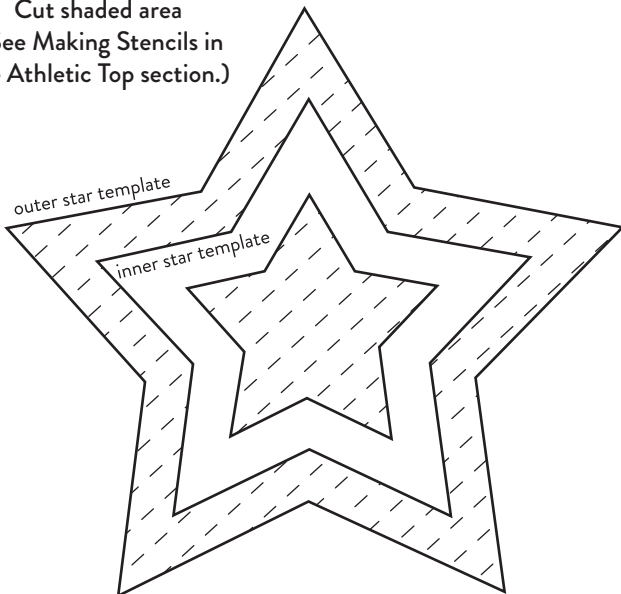
Athletic Top
Stencil Template 55
Cut shaded area
(See Making Stencils in the Athletic Top section.)



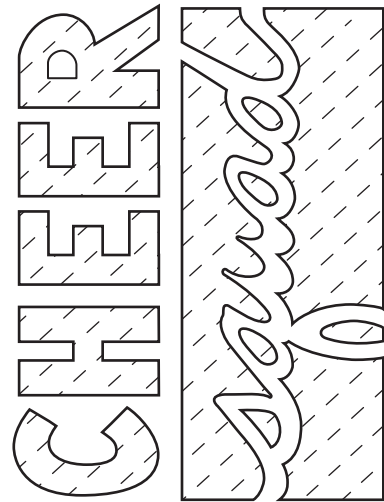
Athletic Top
Stencil Template 27
Cut shaded area
(See Making Stencils in the Athletic Top section.)



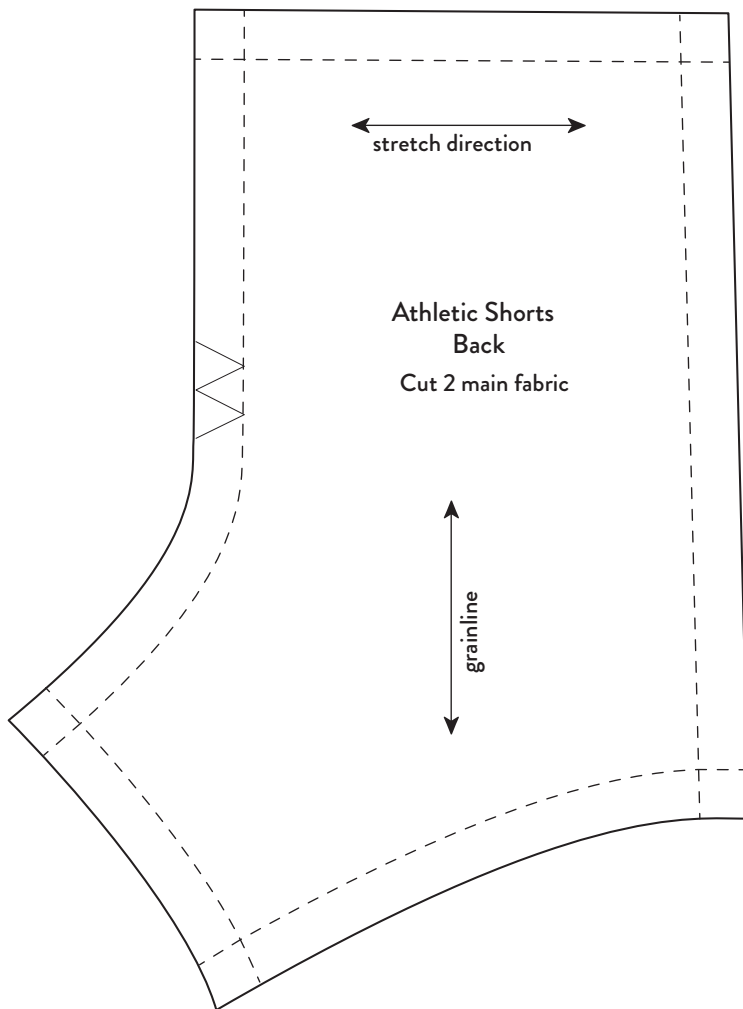
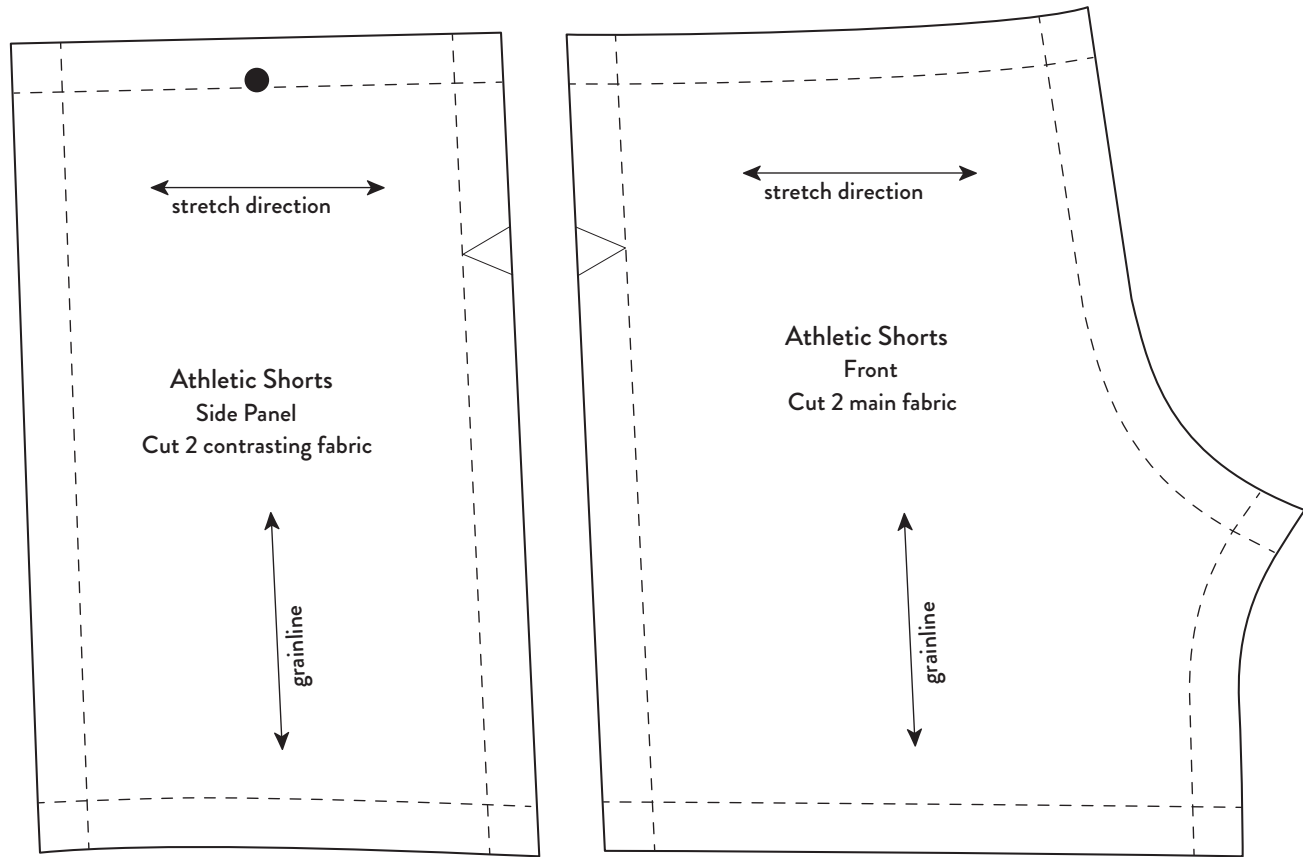
Athletic Top
Stencil Template Star
Cut shaded area
(See Making Stencils in the Athletic Top section.)



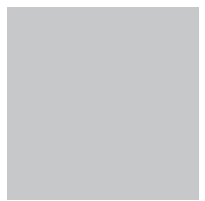
Athletic Top
Stencil Template Cheer Squad
Cut the shaded area
(See Making Stencils in the Athletic Top section.)



Print at 100% with no scaling.
This square should measure
1" (2.5 cm) when printed.



Print at 100% with no scaling.
This square should measure
1" (2.5 cm) when printed.



Waistband
For Leggings, Jeggings, Pajama Pants, and Athletic Shorts

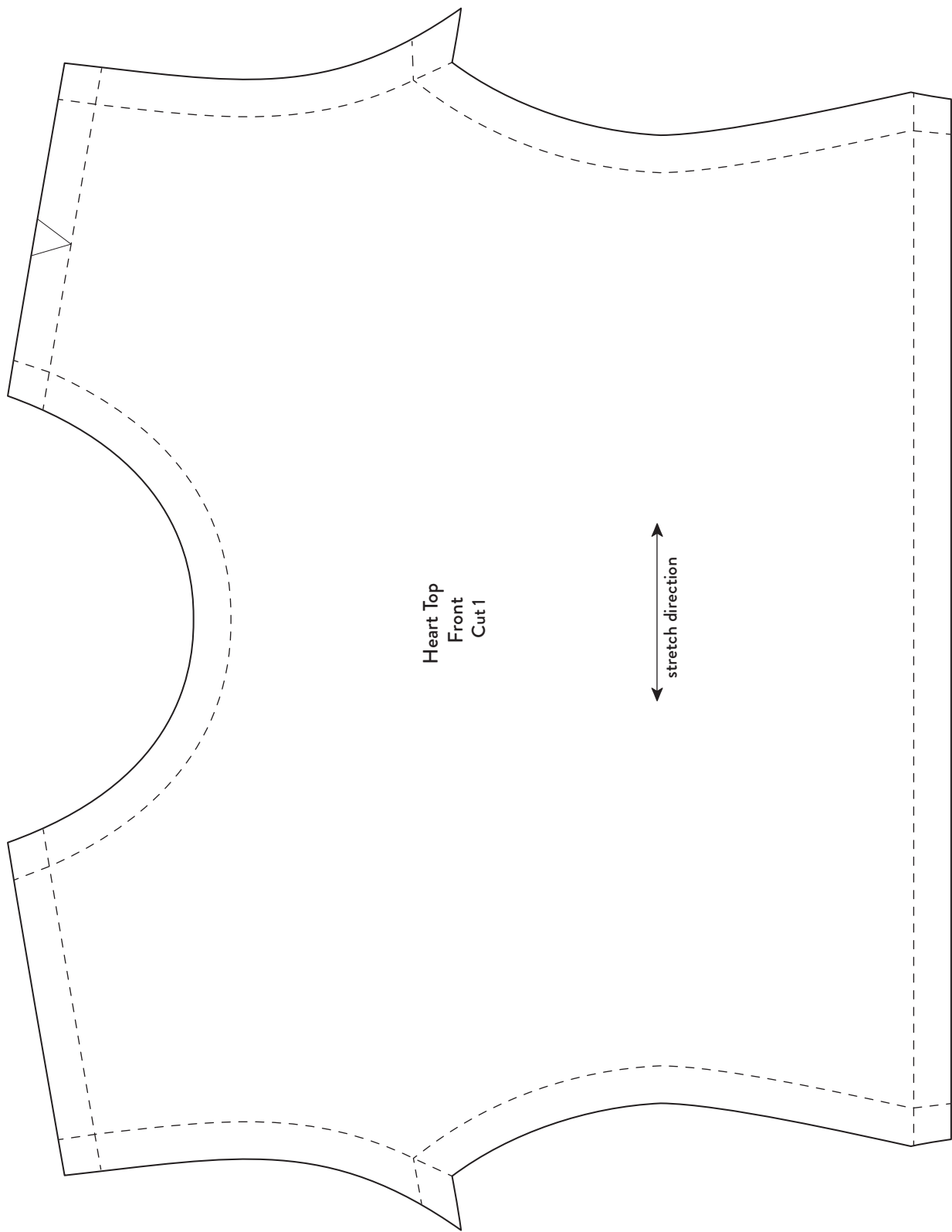
fold



Print at 100% with no scaling.
This square should measure
1" (2.5 cm) when printed.

My Doll, My Style.
Copyright © 2018 by Anna Allen.



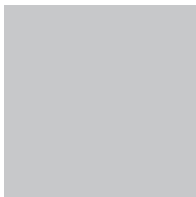


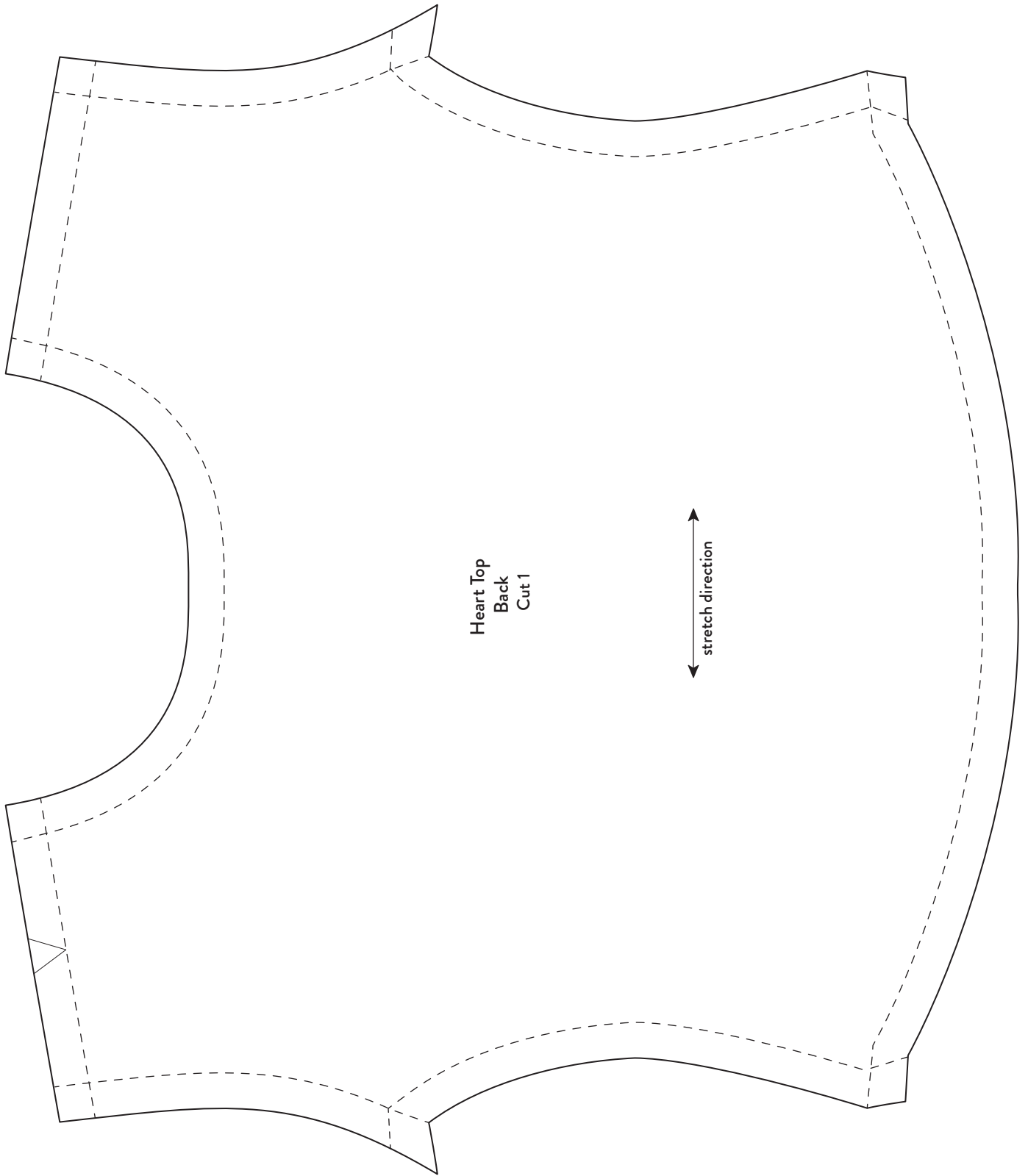
Heart Top
Front
Cut 1

stretch direction

Print at 100% with no scaling.
This square should measure
1" (2.5 cm) when printed.

My Doll, My Style.
Copyright © 2018 by Anna Allen.





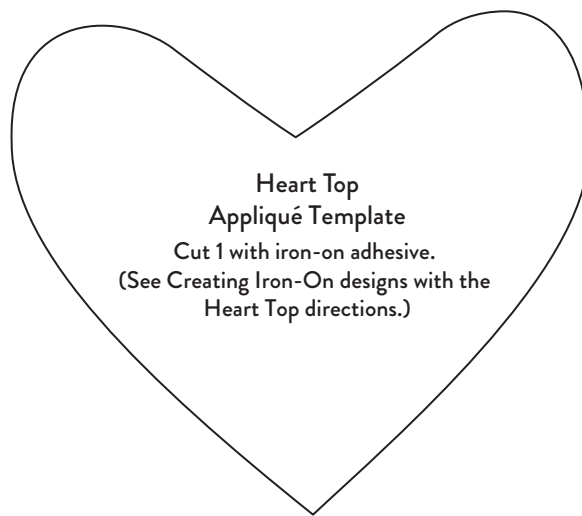
Heart Top
Back
Cut 1



Print at 100% with no scaling.
This square should measure
1" (2.5 cm) when printed.

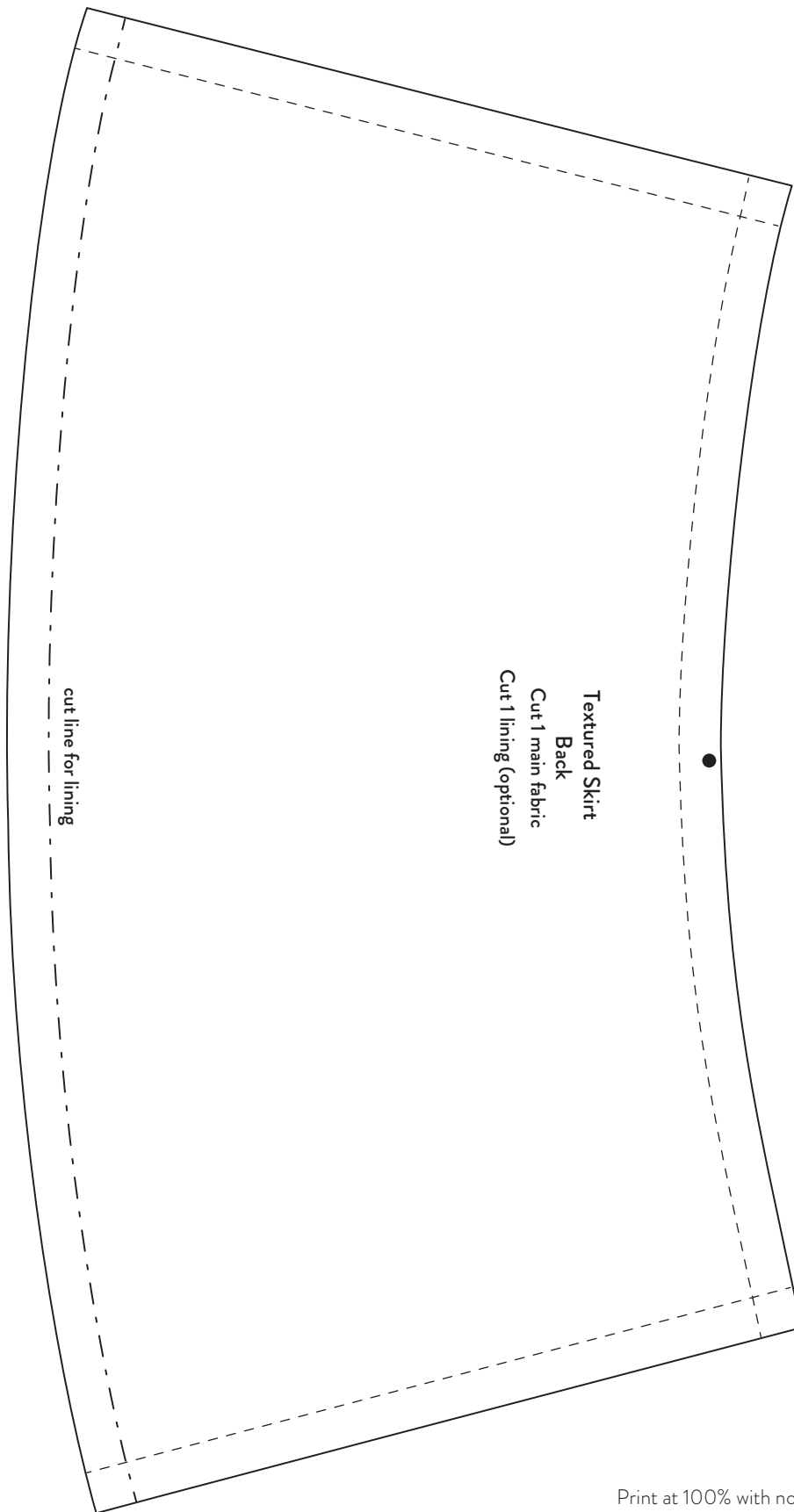
My Doll, My Style.
Copyright © 2018 by Anna Allen.





Print at 100% with no scaling.
This square should measure
1" (2.5 cm) when printed.

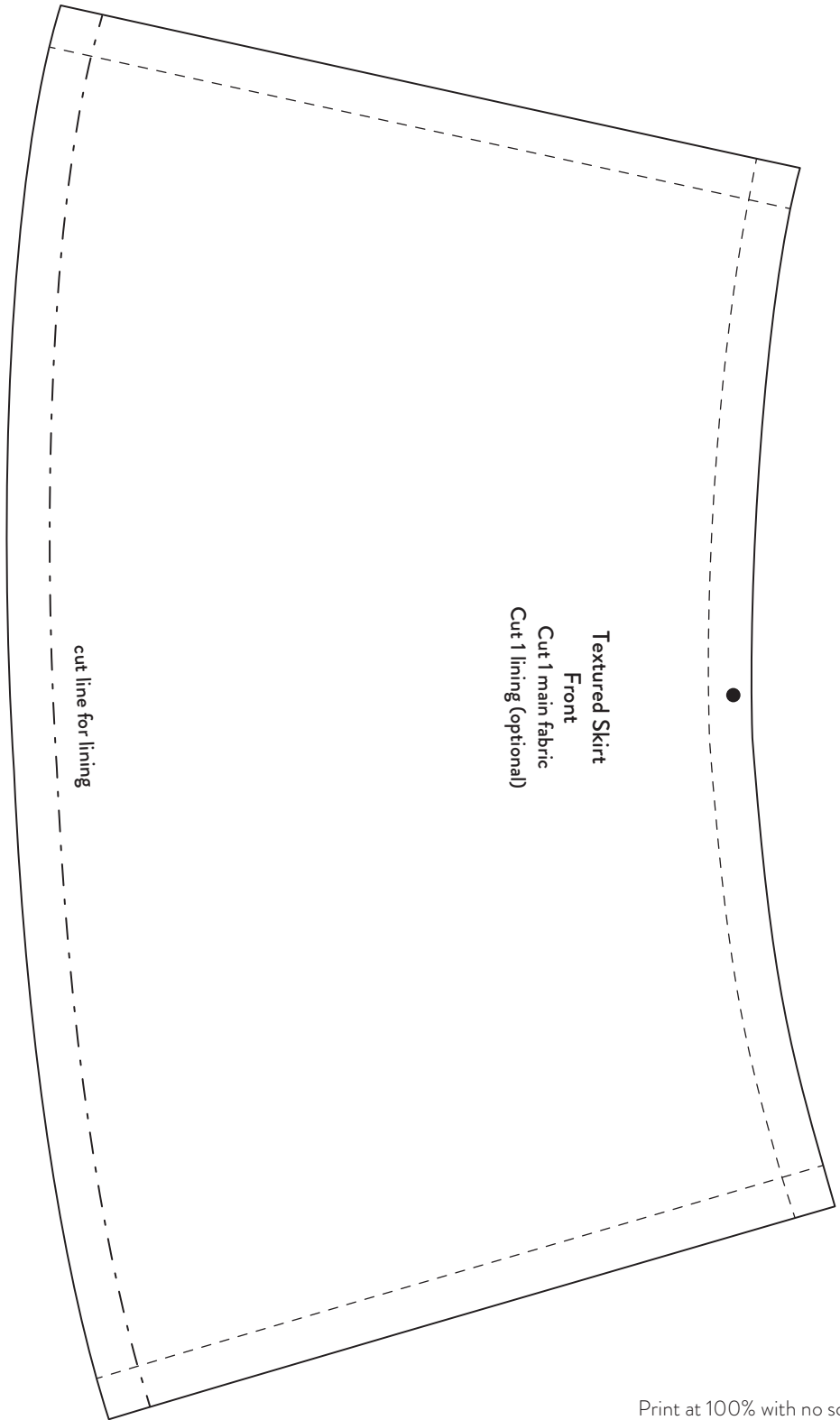




Print at 100% with no scaling.
This square should measure
1" (2.5 cm) when printed.

My Doll, My Style.
Copyright © 2018 by Anna Allen.



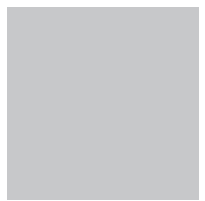


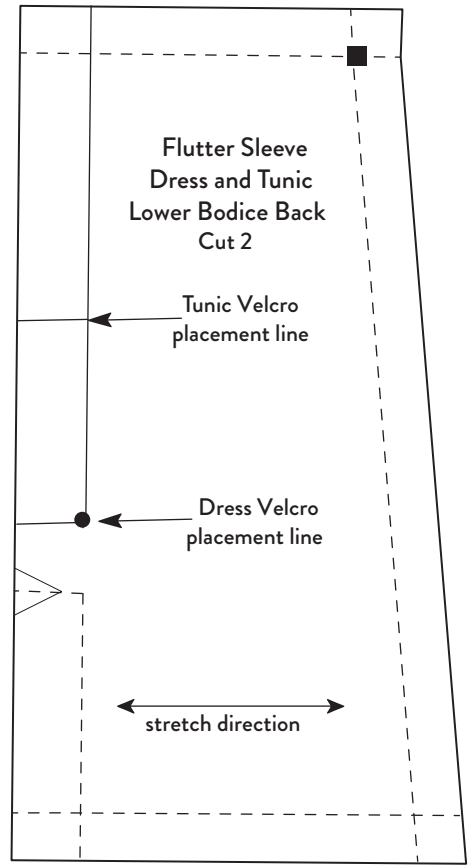
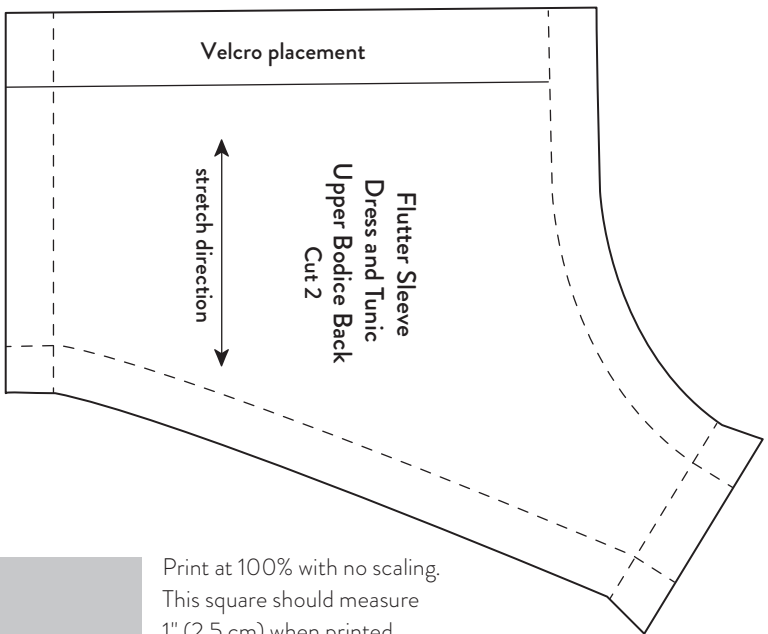
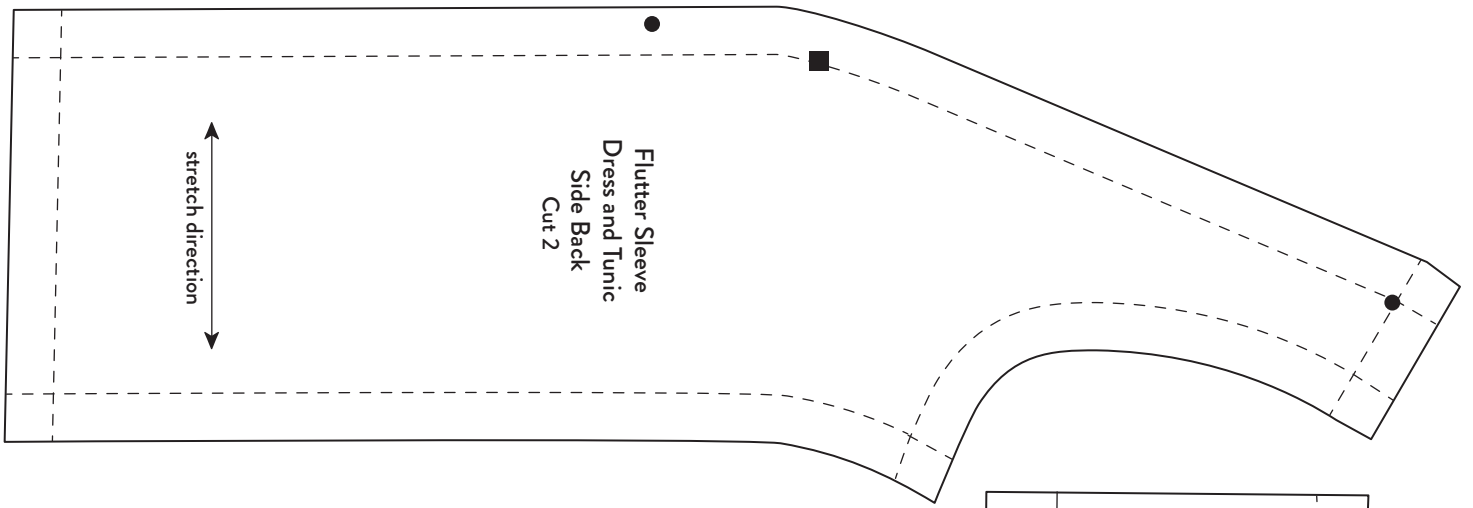
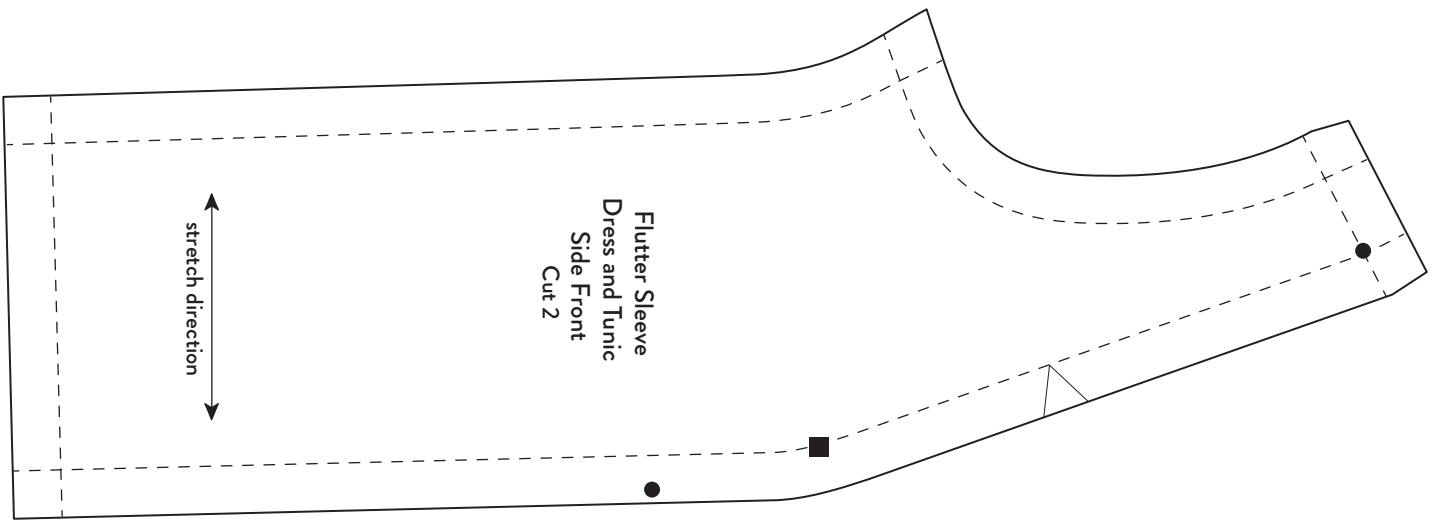
Textured Skirt
Front
Cut 1 main fabric
Cut 1 lining (optional)

cut line for lining

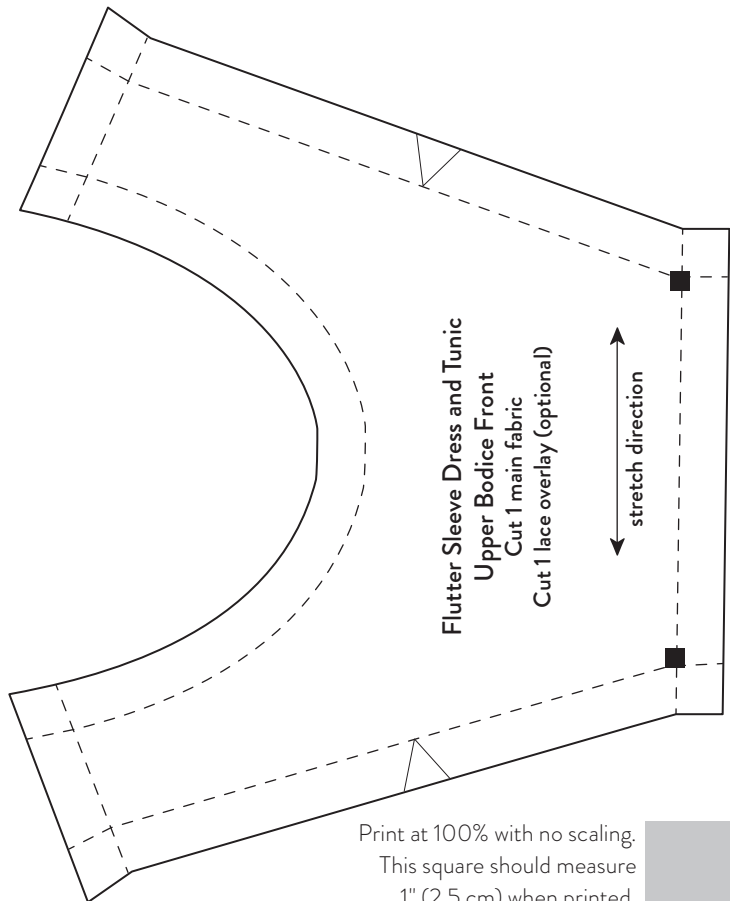
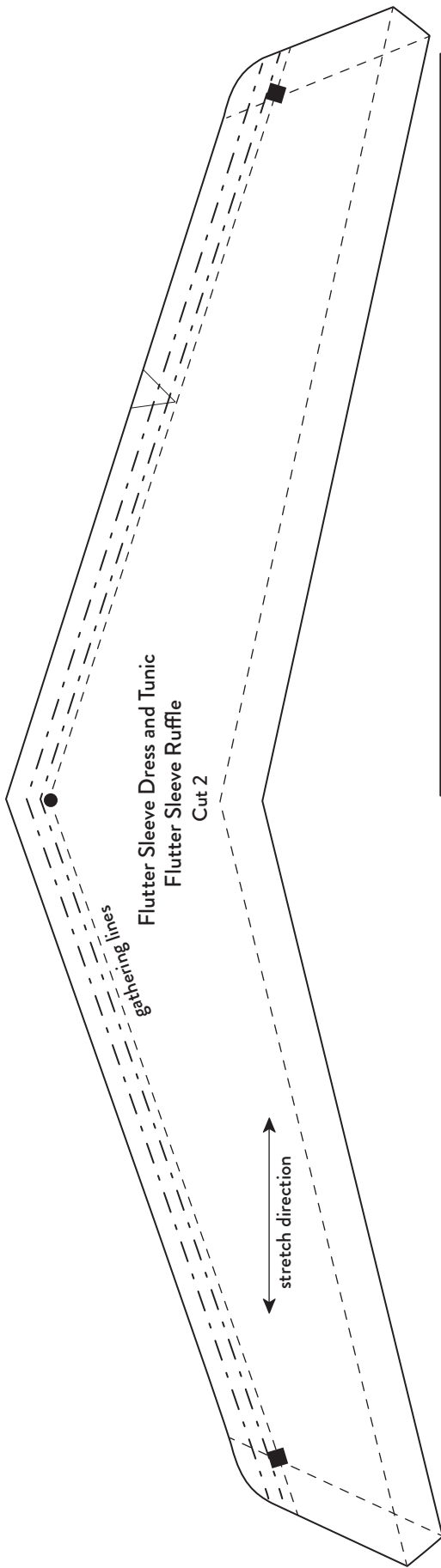
Print at 100% with no scaling.
This square should measure
1" (2.5 cm) when printed.

My Doll, My Style.
Copyright © 2018 by Anna Allen.

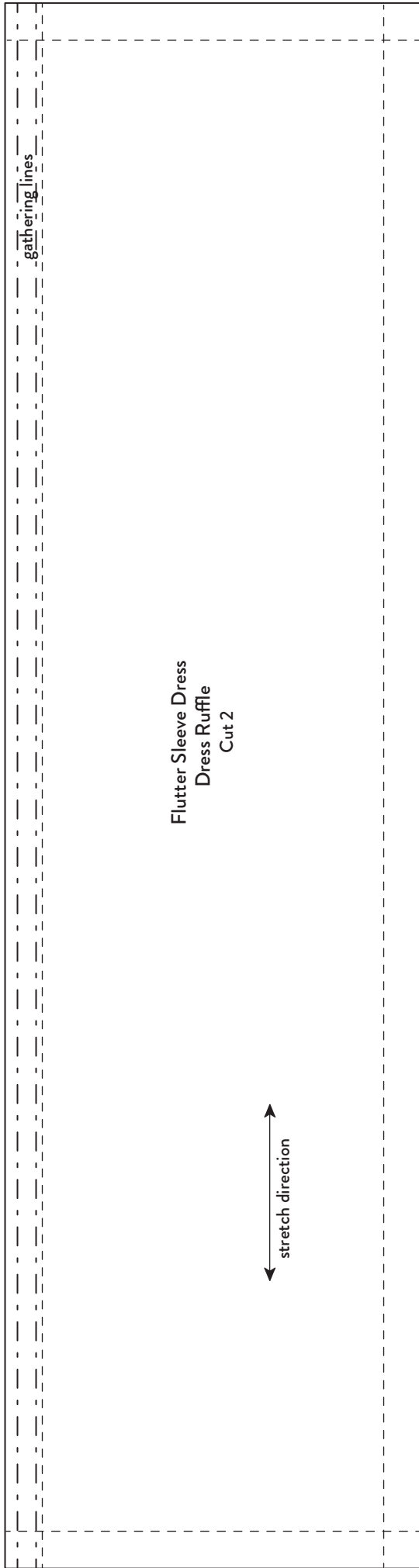




Print at 100% with no scaling.
This square should measure
1" (2.5 cm) when printed.



Print at 100% with no scaling.
This square should measure
1" (2.5 cm) when printed.



Flutter Sleeve Dress
Dress Ruffle
Cut 2



Print at 100% with no scaling.
This square should measure
1" (2.5 cm) when printed.

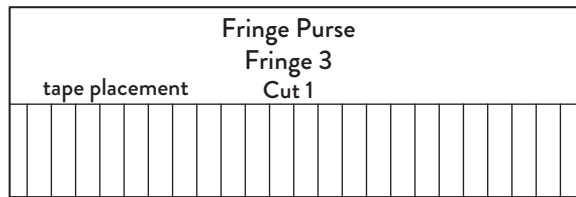
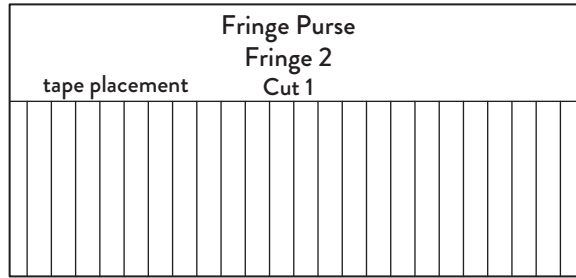
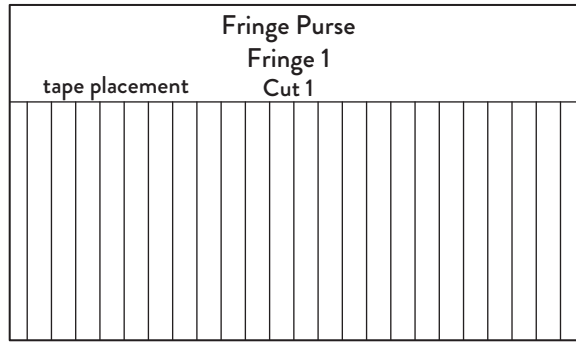
My Doll, My Style.
Copyright © 2018 by Anna Allen.



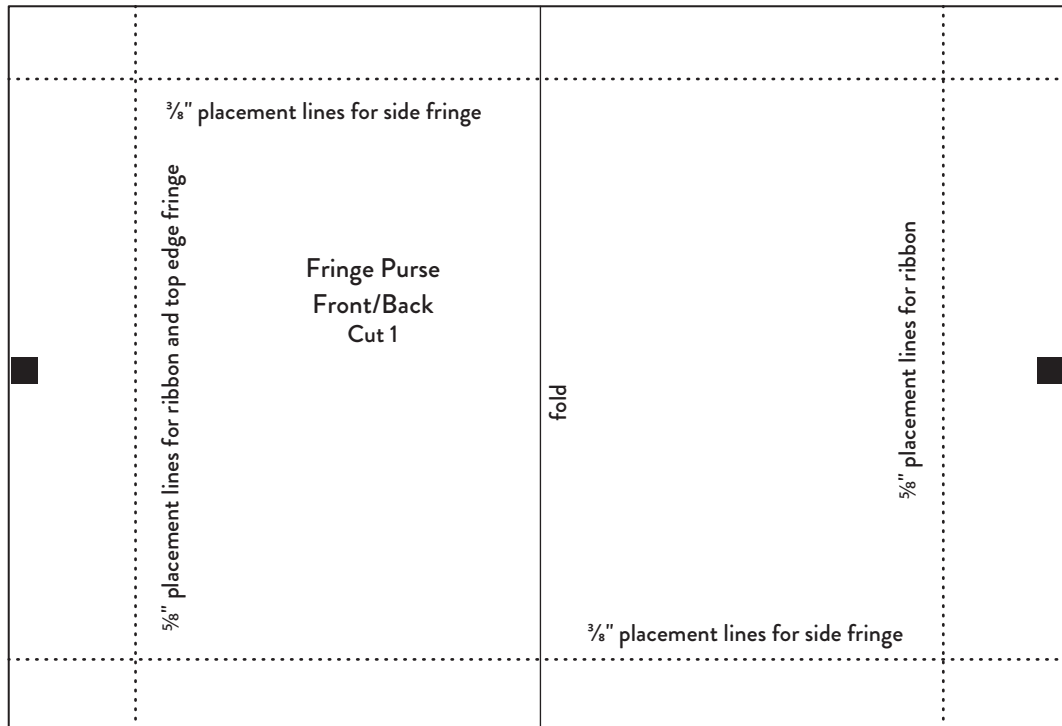
Fringe Purse
Handle 1
Cut 1

Match Handle 1 and Handle 2 pattern pieces along this line and connect with tape.

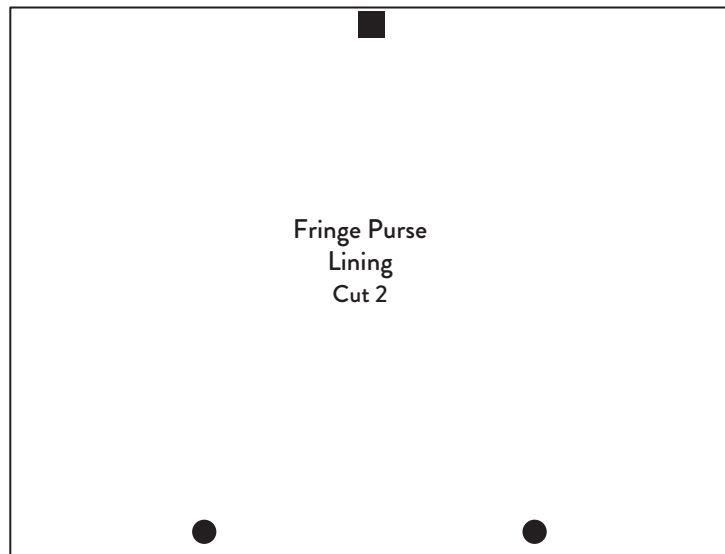
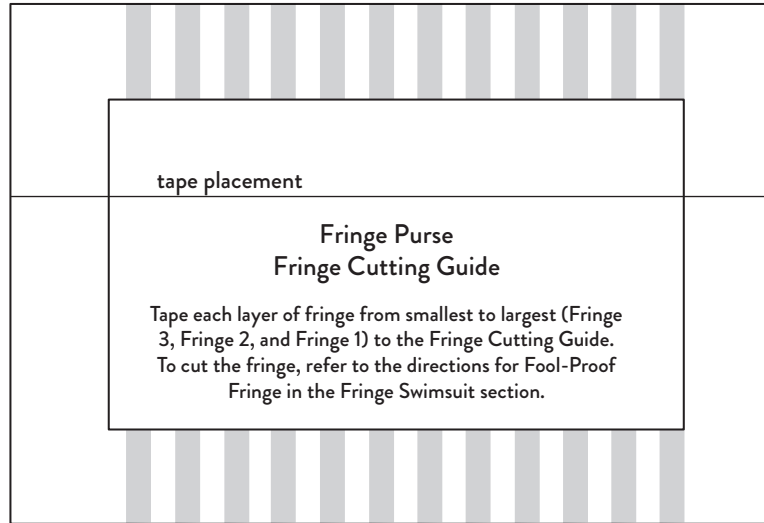
Fringe Purse
Handle 2
Cut 1



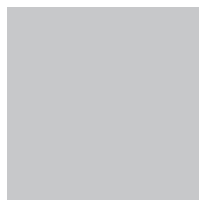
Match Handle 1 and Handle 2 pattern pieces along this line and connect with tape.

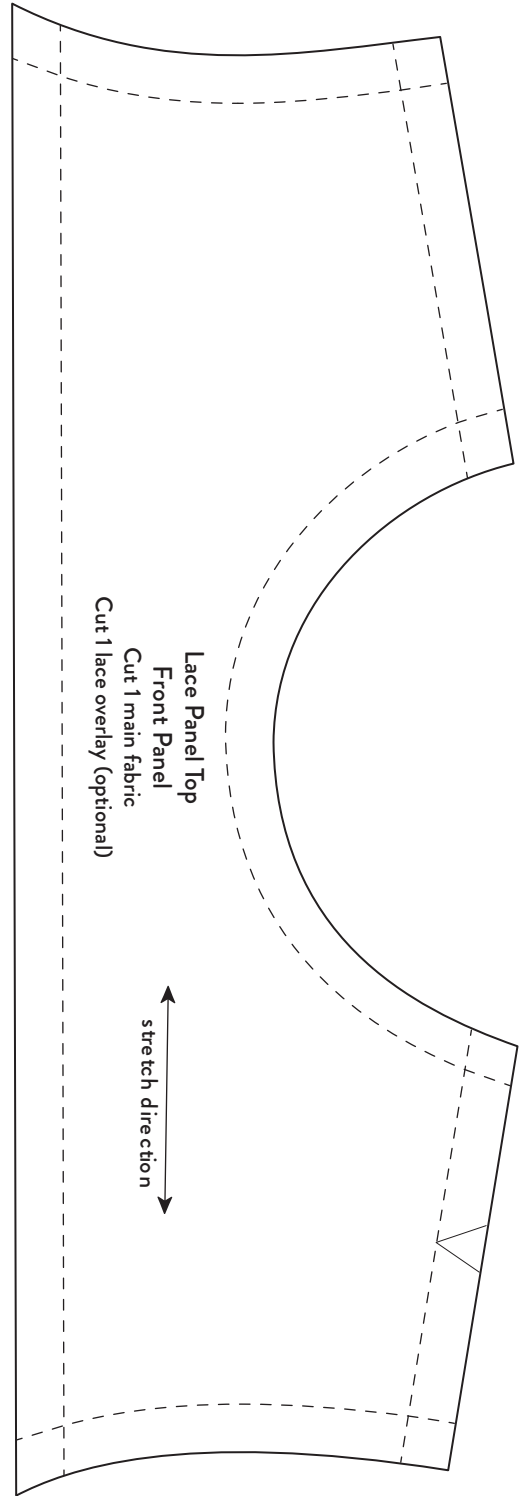
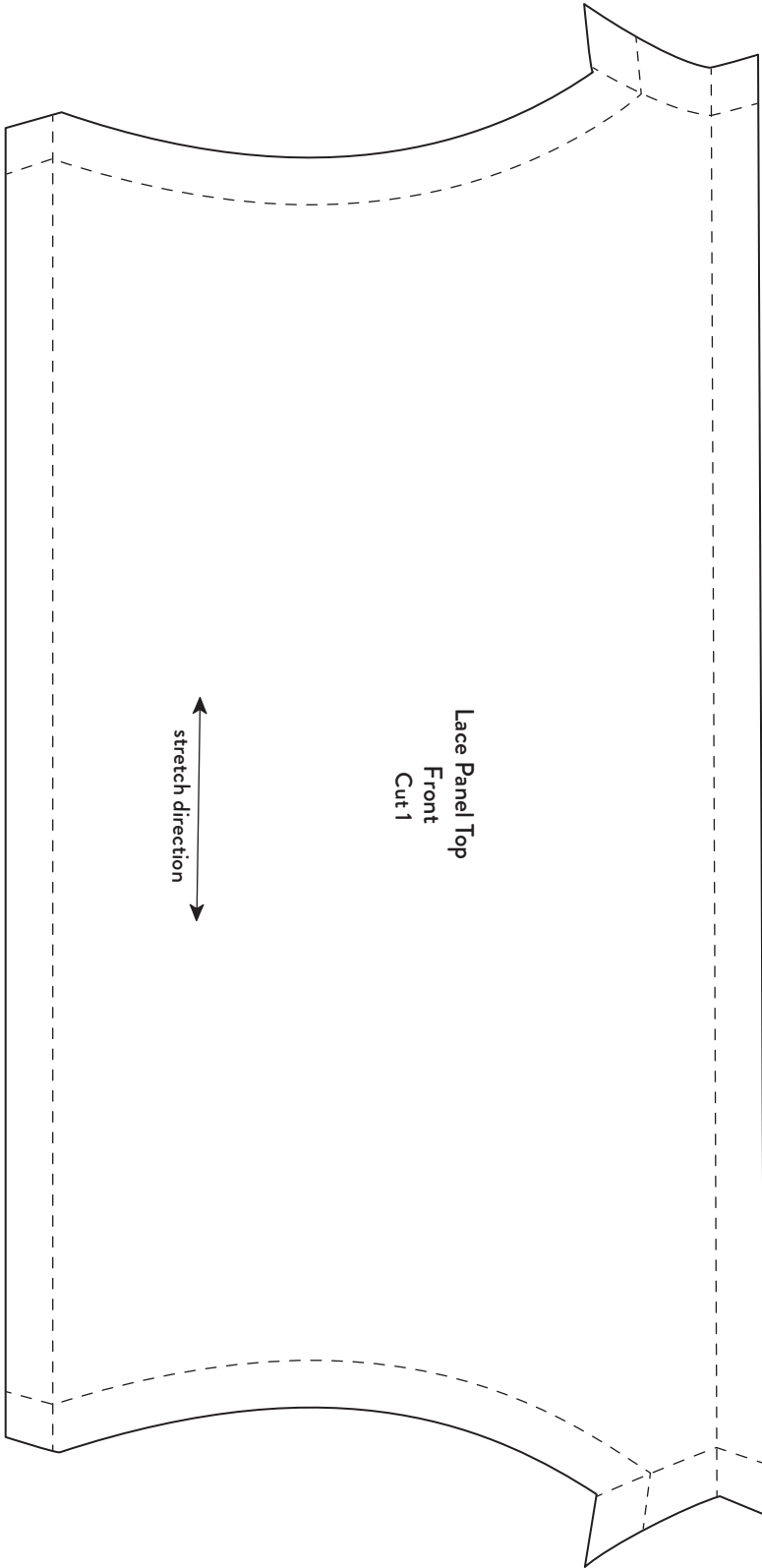


Print at 100% with no scaling.
This square should measure
1" (2.5 cm) when printed.



Print at 100% with no scaling.
This square should measure
1" (2.5 cm) when printed.

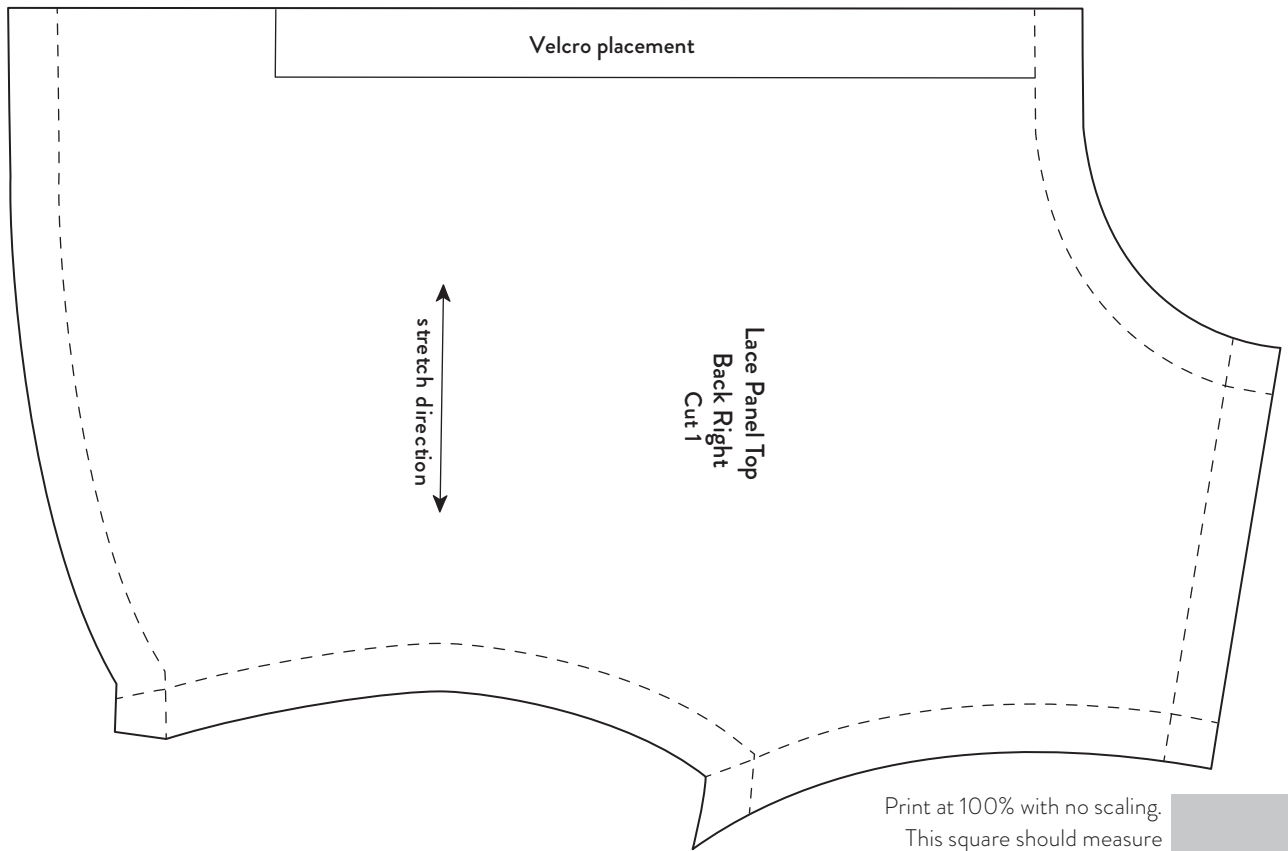
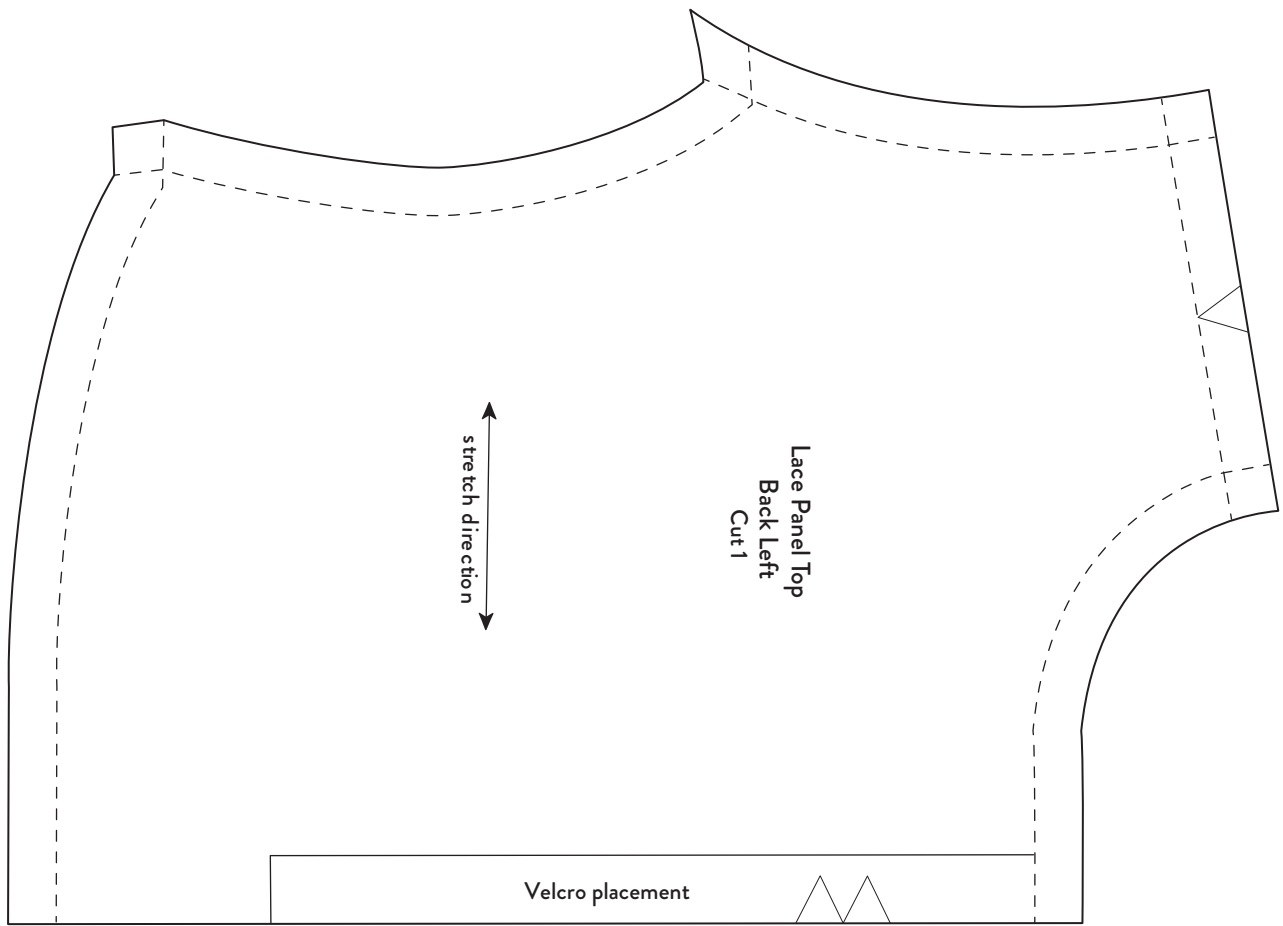




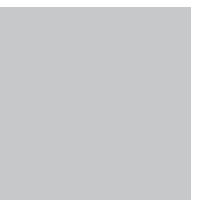
Print at 100% with no scaling.
This square should measure
1" (2.5 cm) when printed.

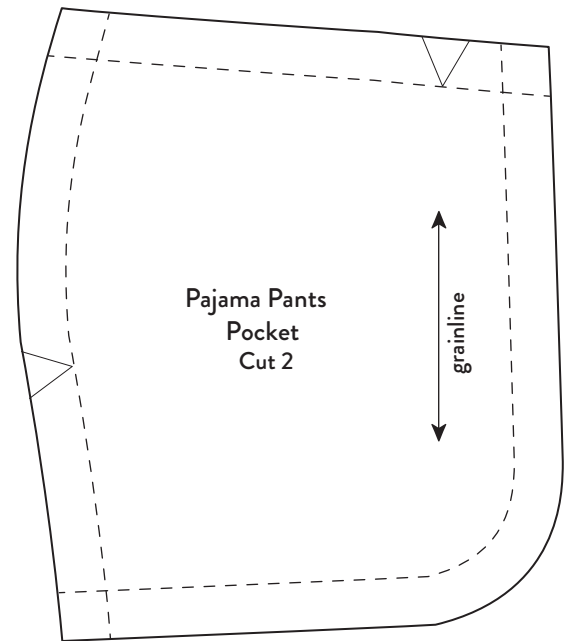
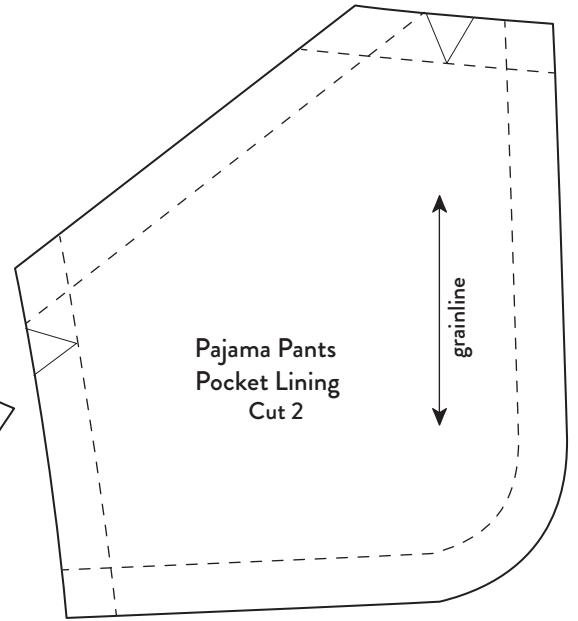
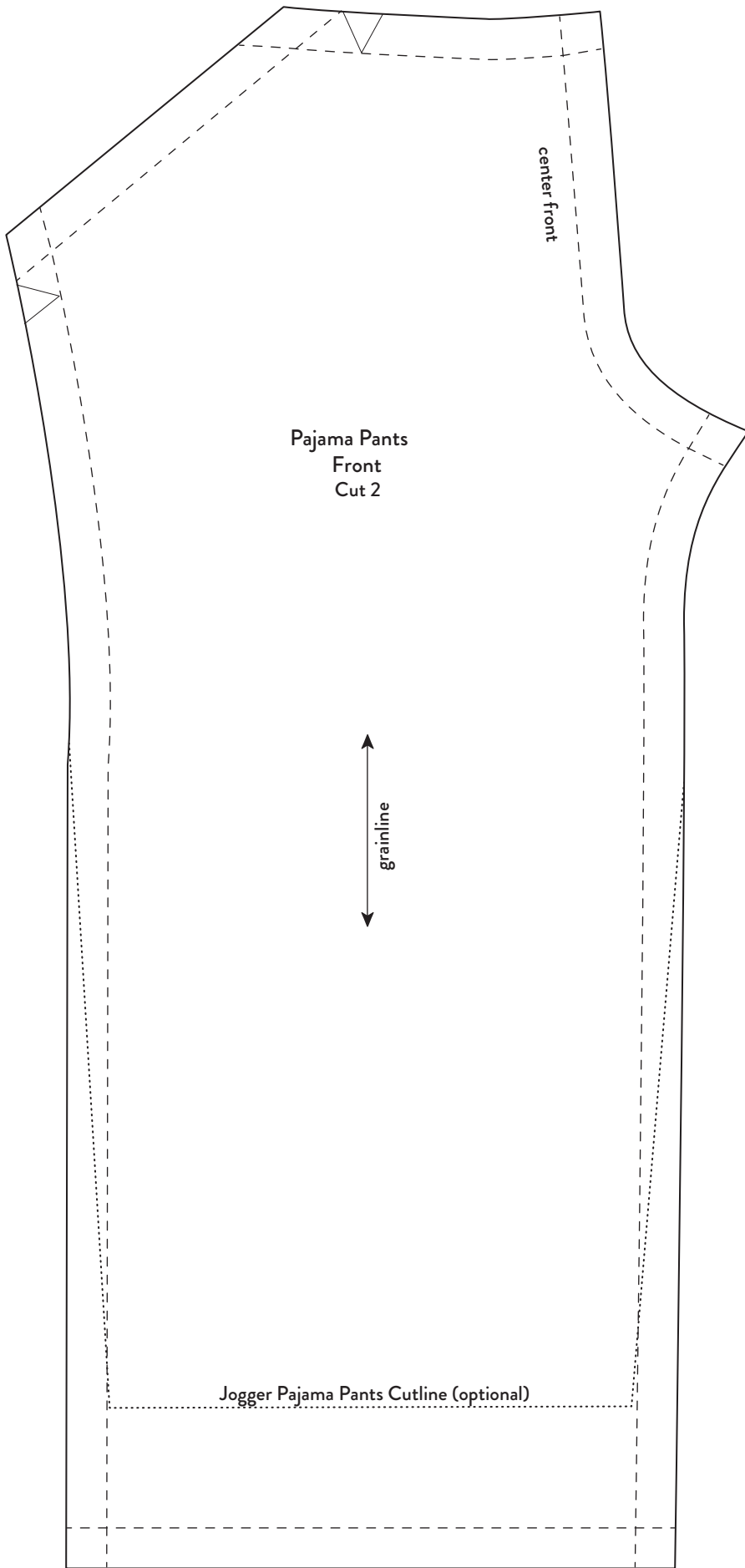
My Doll, My Style.
Copyright © 2018 by Anna Allen.





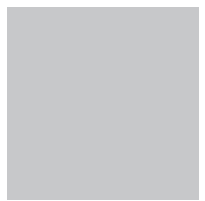
Print at 100% with no scaling.
This square should measure
1" (2.5 cm) when printed.

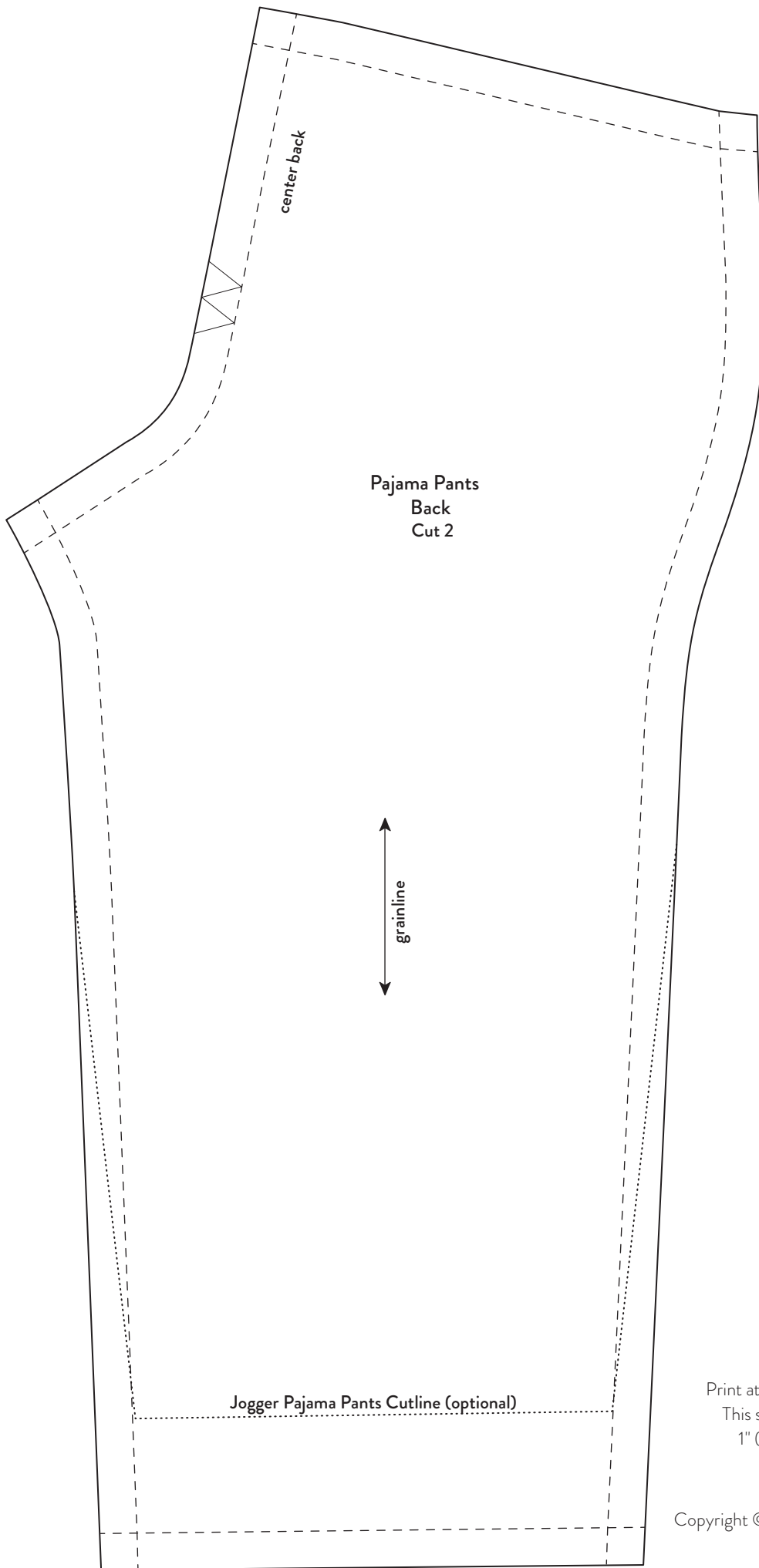




Print at 100% with no scaling.
This square should measure
1" (2.5 cm) when printed.

My Doll, My Style.
Copyright © 2018 by Anna Allen.





Pajama Pants
Back
Cut 2

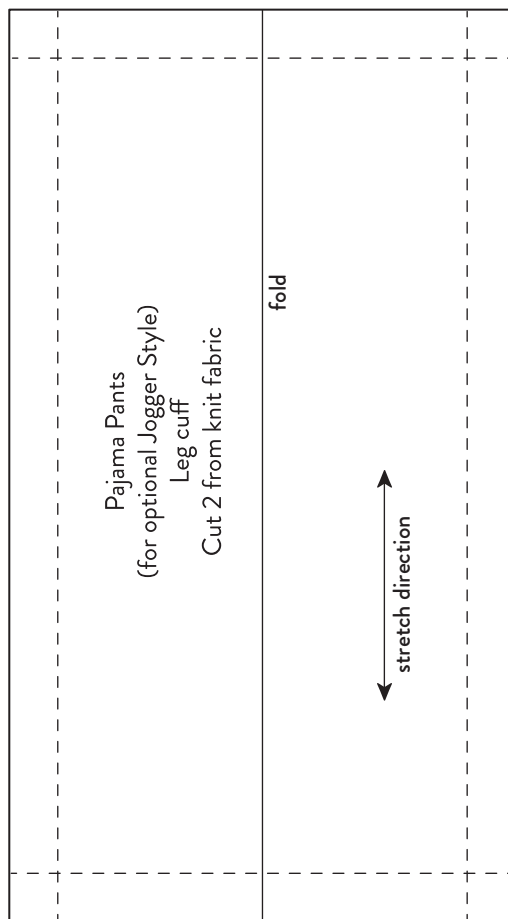
grainline

Jogger Pajama Pants Cutline (optional)

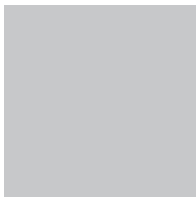
Print at 100% with no scaling.
This square should measure
1" (2.5 cm) when printed.

My Doll, My Style.
Copyright © 2018 by Anna Allen.



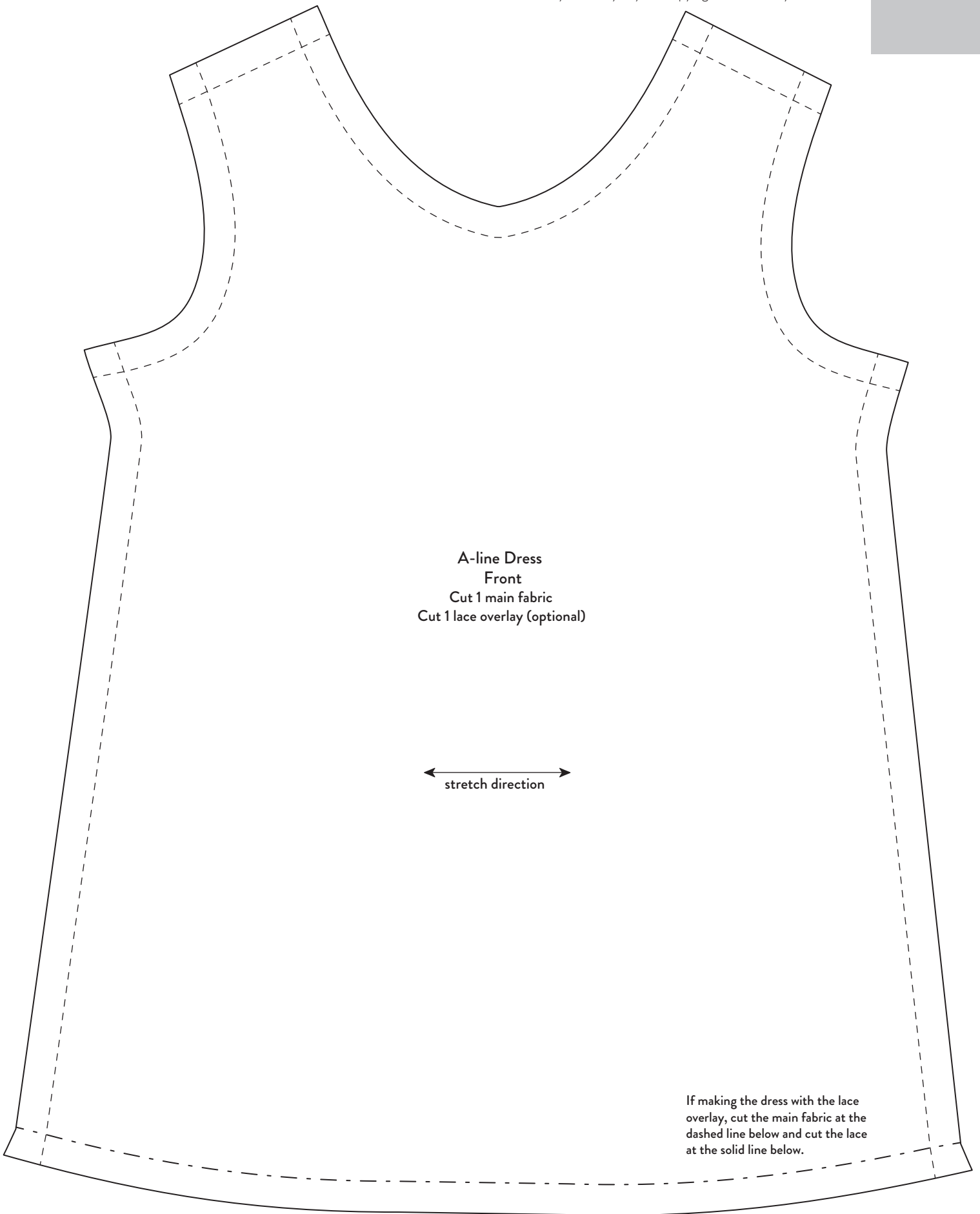


Print at 100% with no scaling.
This square should measure
1" (2.5 cm) when printed.



Print at 100% with no scaling.
This square should measure 1" (2.5 cm) when printed.

My Doll, My Style. Copyright © 2018 by Anna Allen.

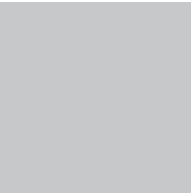


A-line Dress
Front
Cut 1 main fabric
Cut 1 lace overlay (optional)

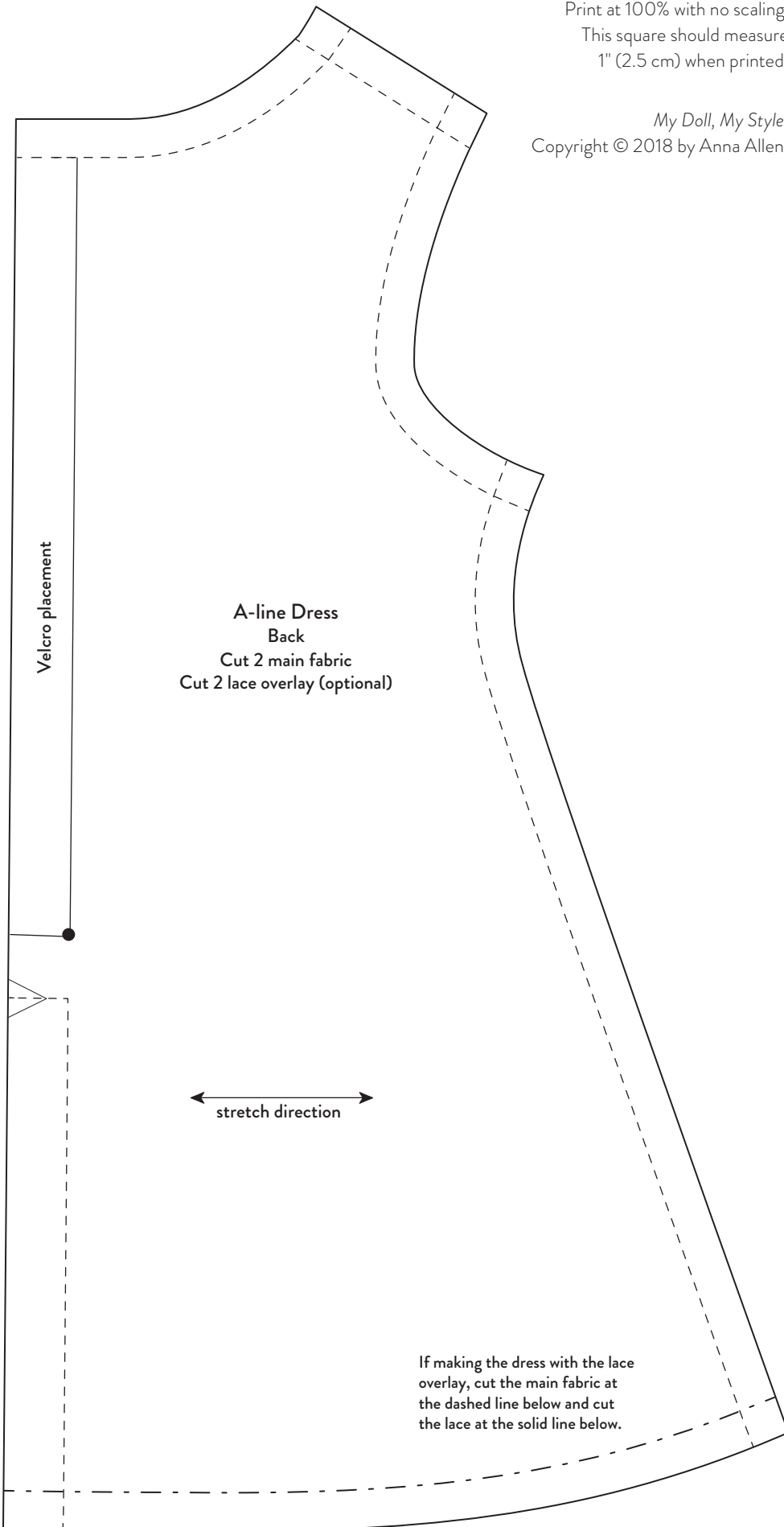
← stretch direction →

If making the dress with the lace overlay, cut the main fabric at the dashed line below and cut the lace at the solid line below.

Print at 100% with no scaling.
This square should measure
1" (2.5 cm) when printed.

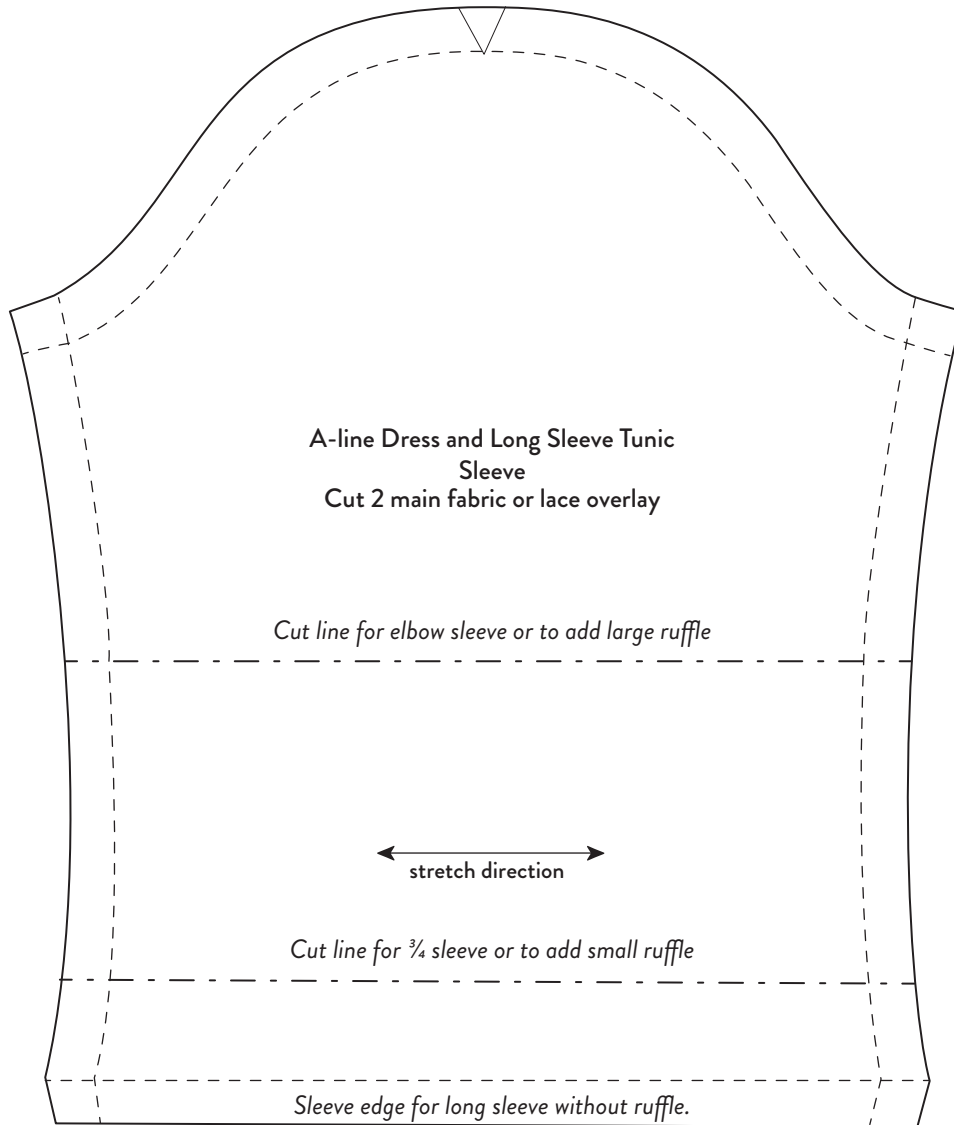


My Doll, My Style.
Copyright © 2018 by Anna Allen.



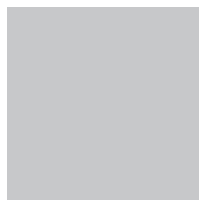
A-line Dress
Back
Cut 2 main fabric
Cut 2 lace overlay (optional)

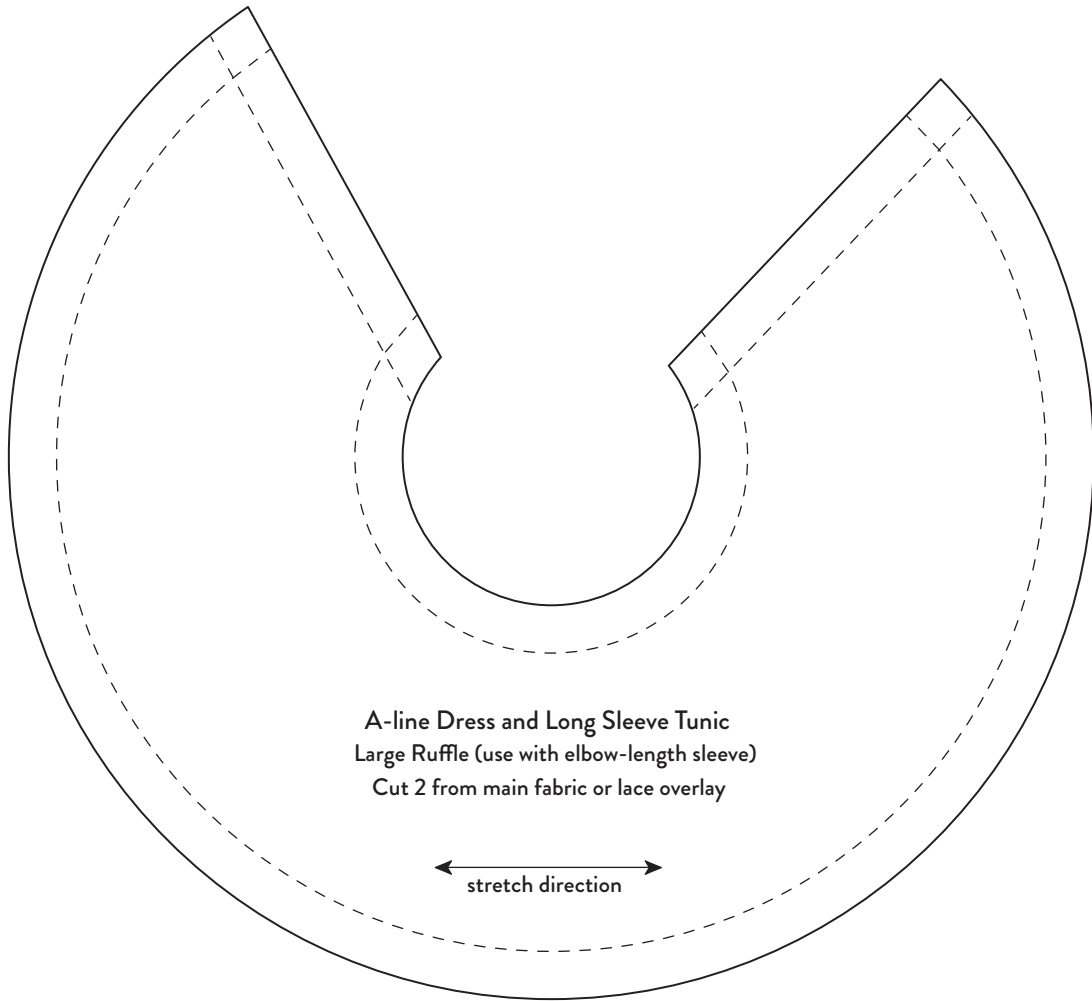
If making the dress with the lace overlay, cut the main fabric at the dashed line below and cut the lace at the solid line below.



Print at 100% with no scaling.
This square should measure
1" (2.5 cm) when printed.

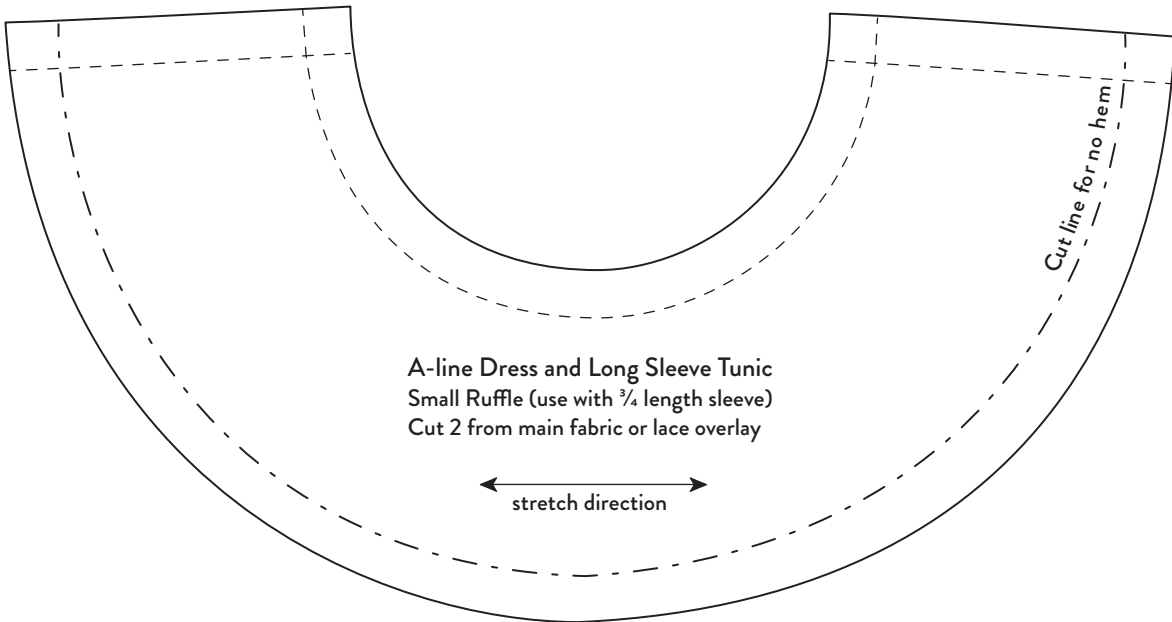
My Doll, My Style.
Copyright © 2018 by Anna Allen.





A-line Dress and Long Sleeve Tunic
Large Ruffle (use with elbow-length sleeve)
Cut 2 from main fabric or lace overlay

stretch direction



A-line Dress and Long Sleeve Tunic
Small Ruffle (use with $\frac{3}{4}$ length sleeve)
Cut 2 from main fabric or lace overlay

stretch direction

Cut line for no hem!

Print at 100% with no scaling.
This square should measure
1" (2.5 cm) when printed.

My Doll, My Style.
Copyright © 2018 by Anna Allen.





Long Sleeve Tunic
Front
Cut 1 main fabric
Cut 1 lace overlay (optional)

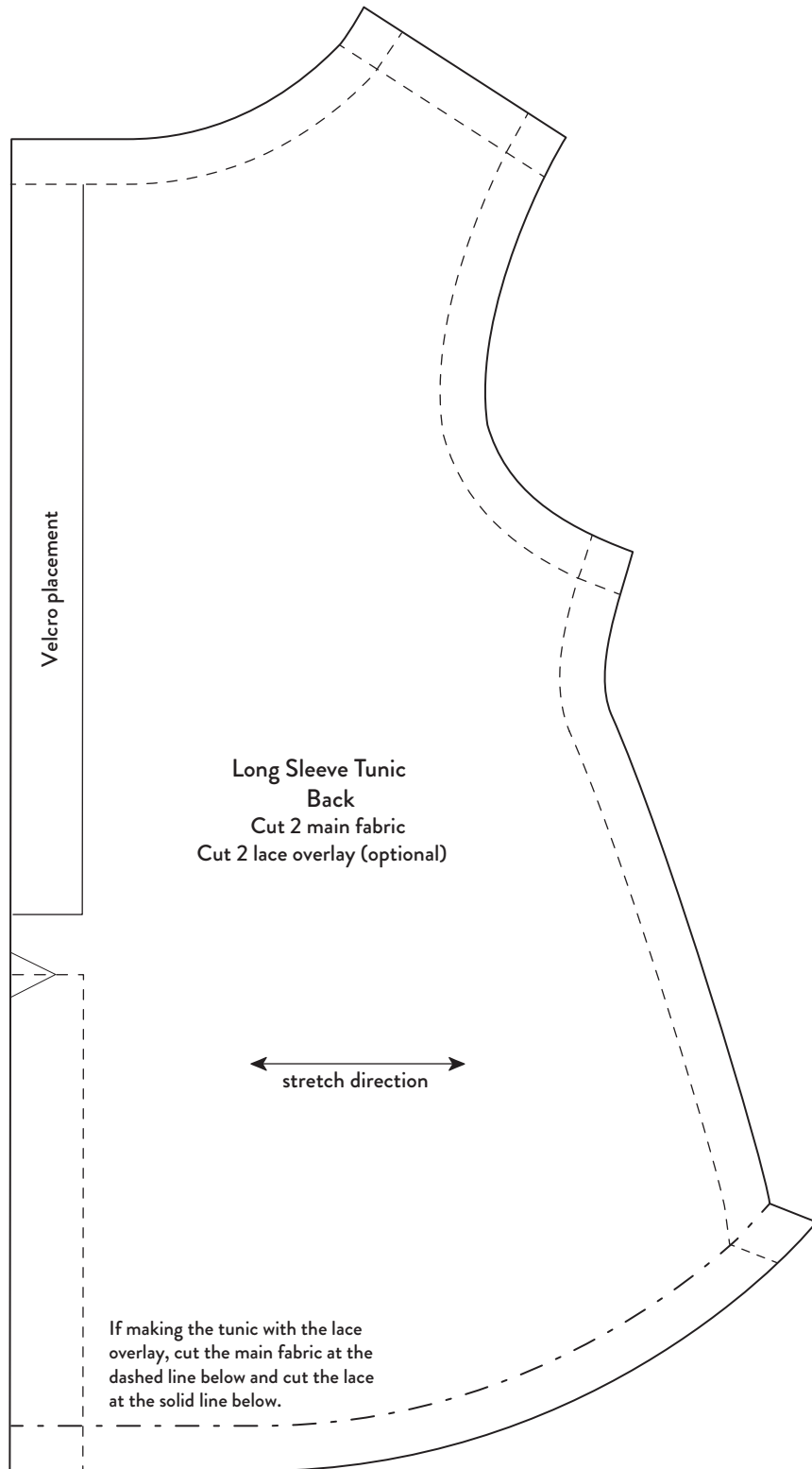
← stretch direction →

If making the tunic with the lace overlay, cut the main fabric at the dashed line below and cut the lace at the solid line below.

Print at 100% with no scaling.
This square should measure
1" (2.5 cm) when printed.

My Doll, My Style.
Copyright © 2018 by Anna Allen.

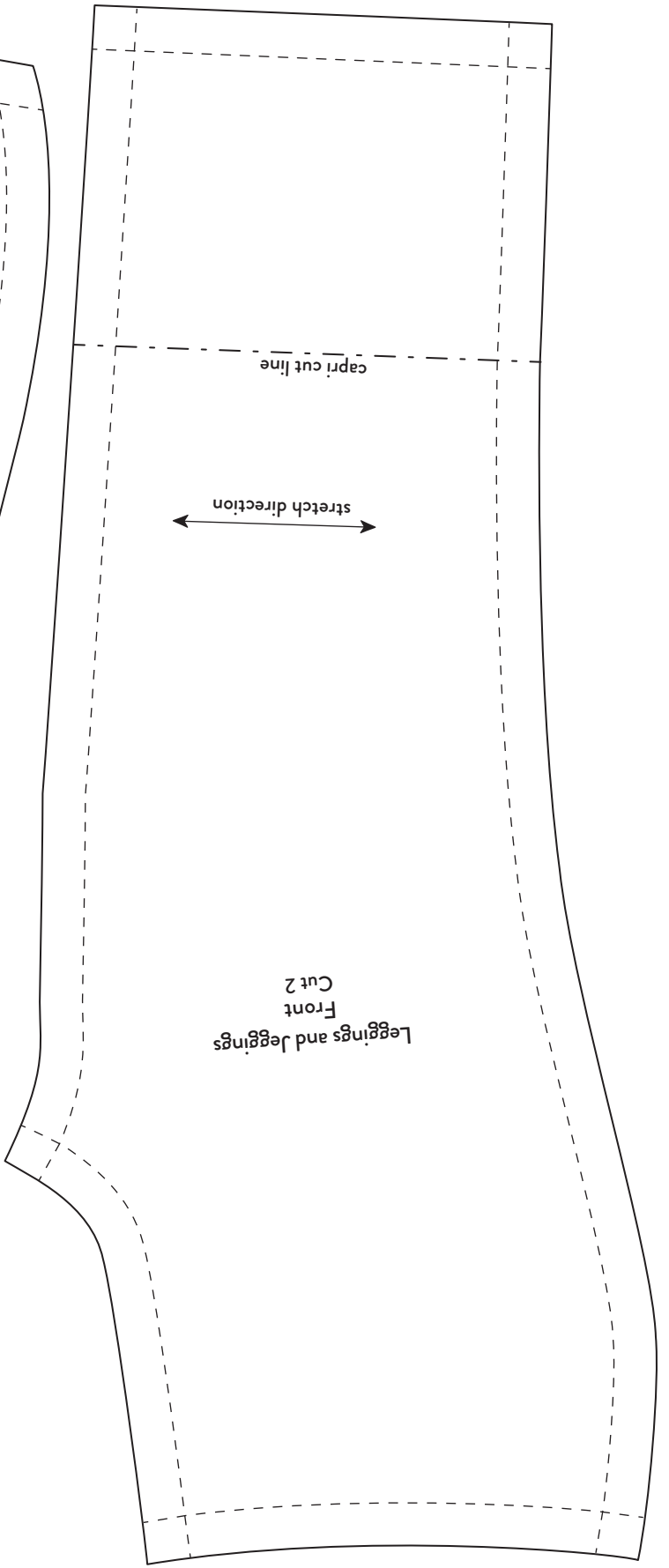
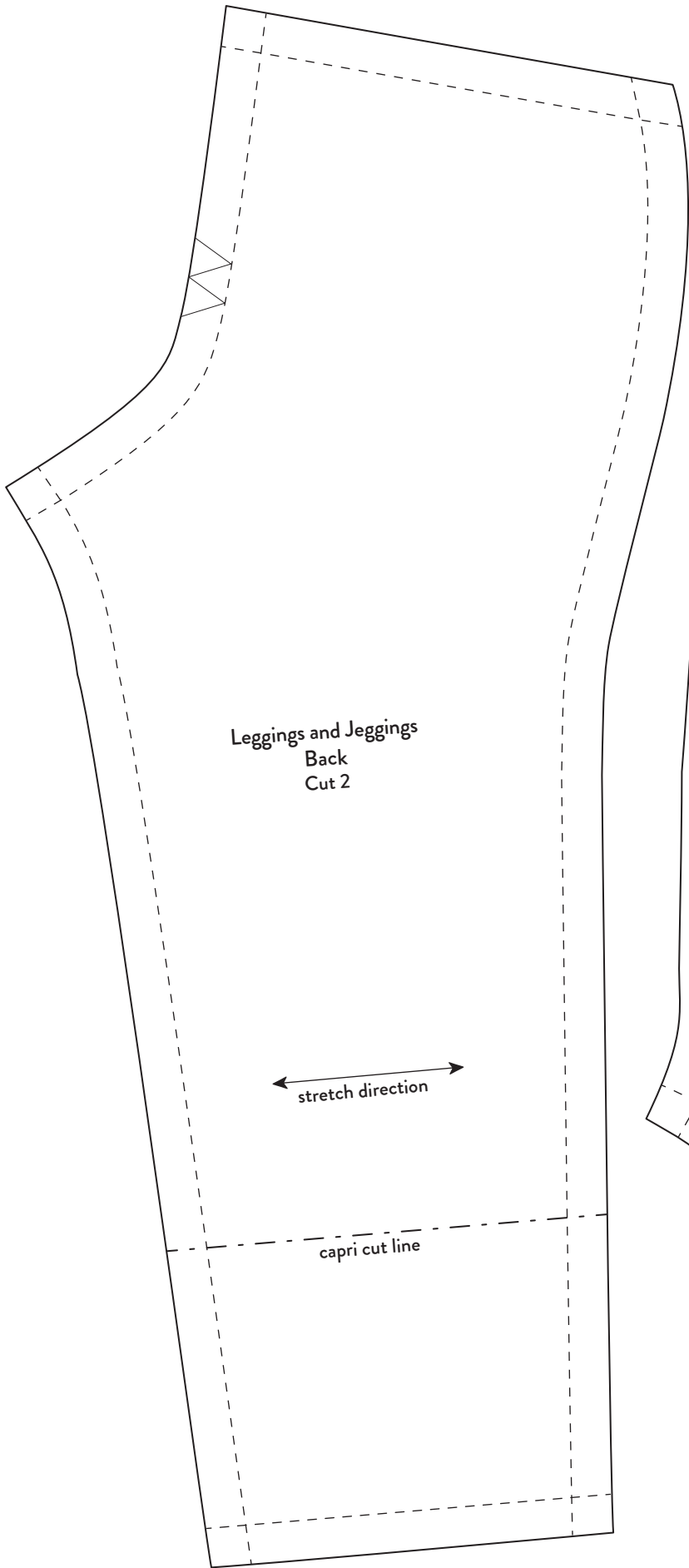




Print at 100% with no scaling.
This square should measure
1" (2.5 cm) when printed.

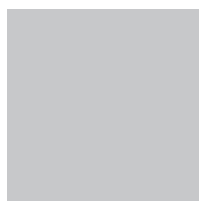
My Doll, My Style.
Copyright © 2018 by Anna Allen.

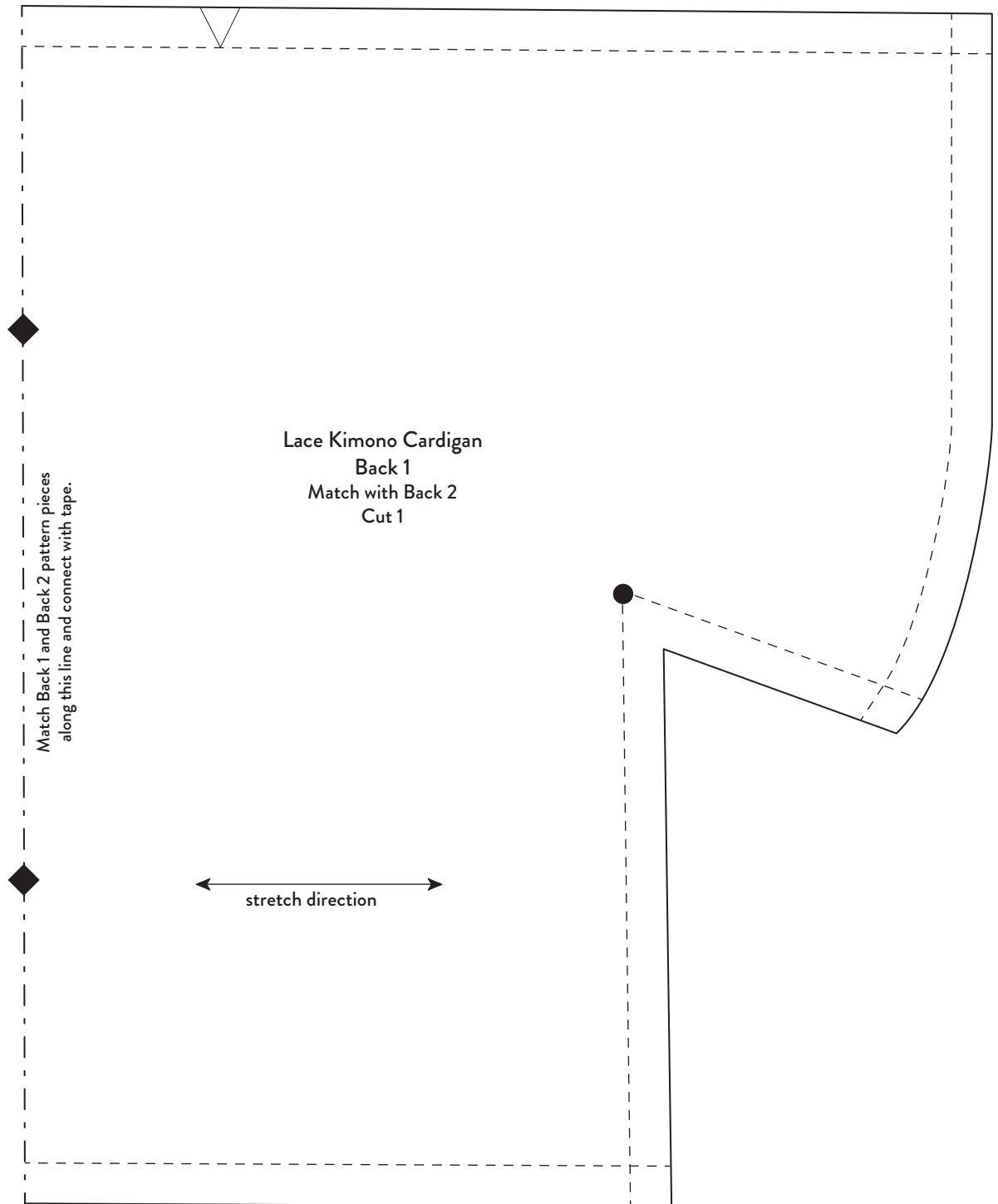




Print at 100% with no scaling.
This square should measure 1" (2.5 cm) when printed.

My Doll, My Style. Copyright © 2018 by Anna Allen.





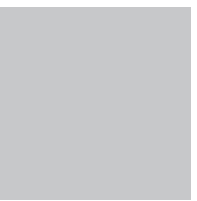
Lace Kimono Cardigan
Back 1
Match with Back 2
Cut 1

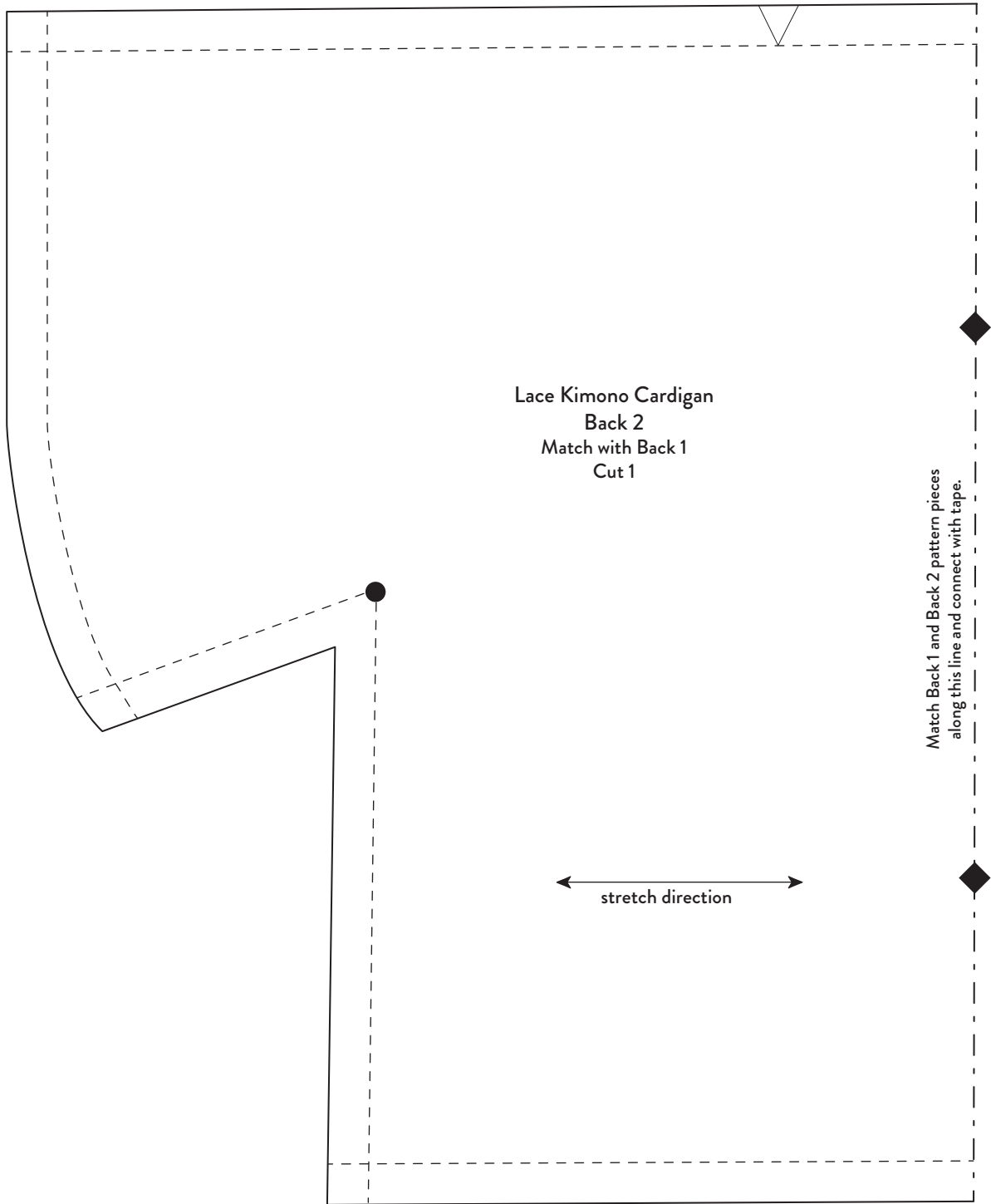
Match Back 1 and Back 2 pattern pieces
along this line and connect with tape.

stretch direction

Print at 100% with no scaling.
This square should measure
1" (2.5 cm) when printed.

My Doll, My Style.
Copyright © 2018 by Anna Allen.

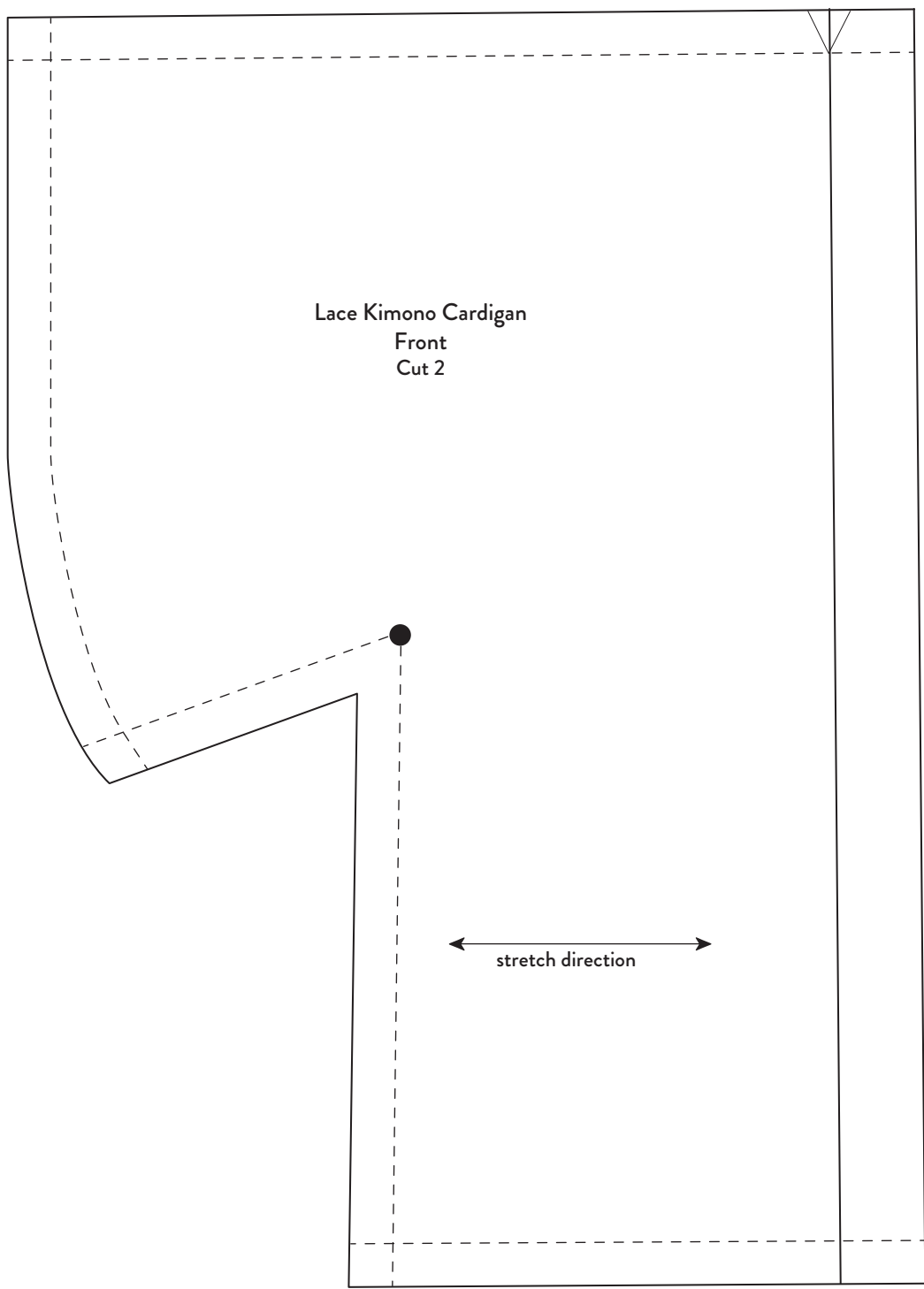




Print at 100% with no scaling.
This square should measure
1" (2.5 cm) when printed.

My Doll, My Style.
Copyright © 2018 by Anna Allen.



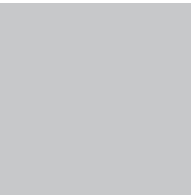


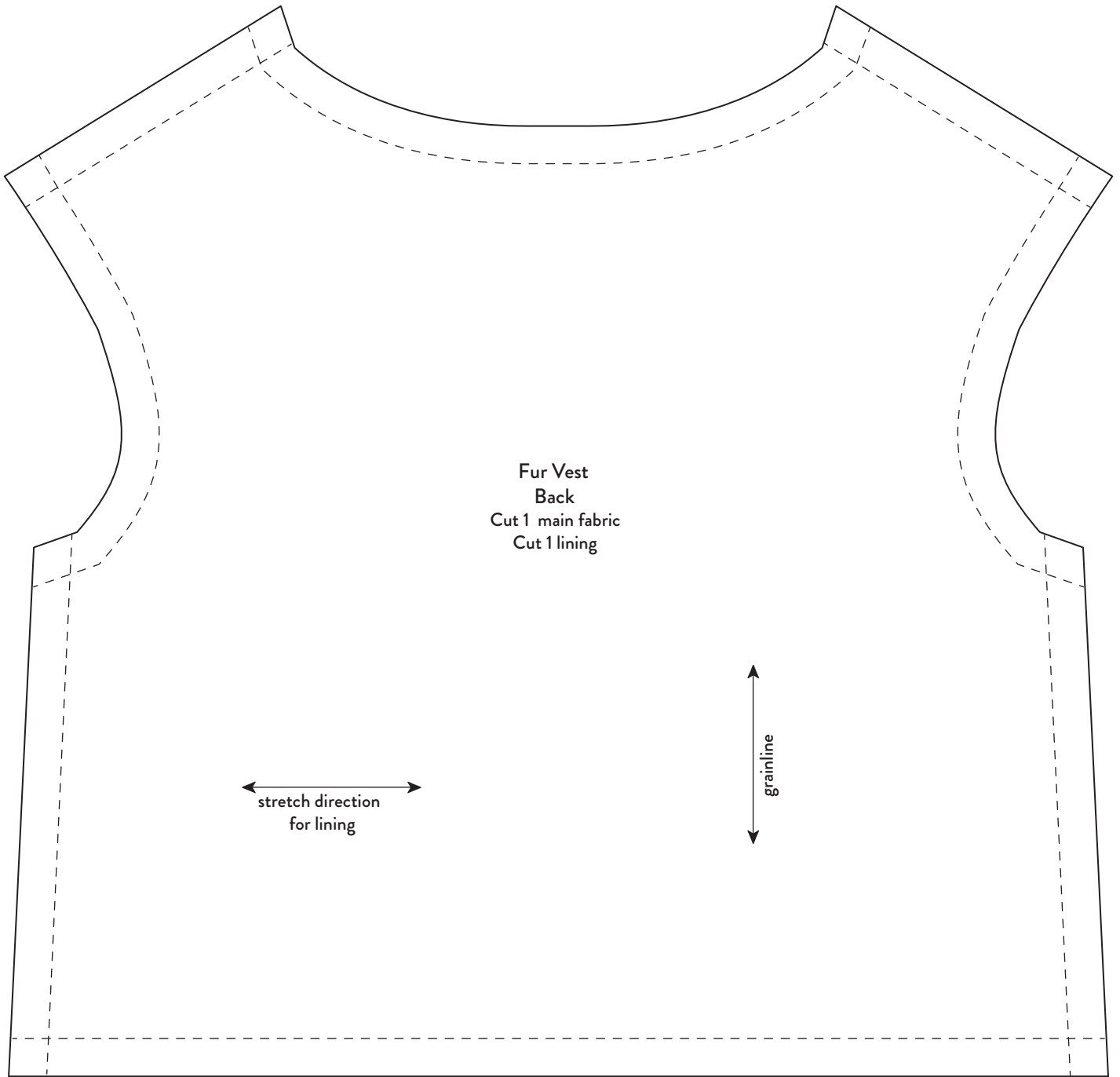
Lace Kimono Cardigan
Front
Cut 2

← stretch direction →

Print at 100% with no scaling.
This square should measure
1" (2.5 cm) when printed.

My Doll, My Style.
Copyright © 2018 by Anna Allen.





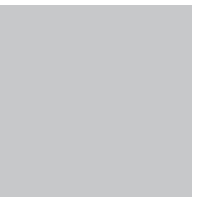
Fur Vest
Back
Cut 1 main fabric
Cut 1 lining

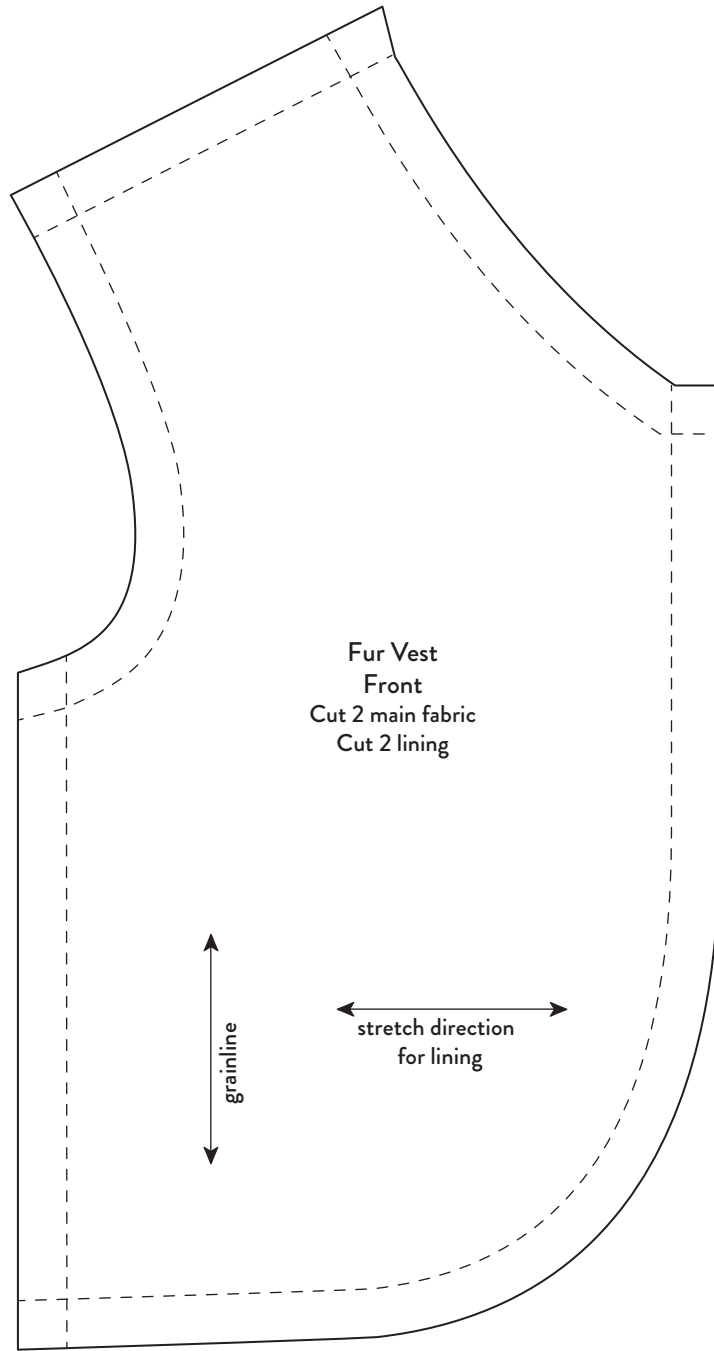
stretch direction
for lining

grainline

Print at 100% with no scaling.
This square should measure
1" (2.5 cm) when printed.

My Doll, My Style.
Copyright © 2018 by Anna Allen.





Fur Vest
Front
Cut 2 main fabric
Cut 2 lining

grainline

stretch direction
for lining

Print at 100% with no scaling.
This square should measure
1" (2.5 cm) when printed.

My Doll, My Style.
Copyright © 2018 by Anna Allen.

