

SKILL LEVEL ♦♦



Fabrics by Andover



Fabrics by
Maywood Studio



Once you have tried
the basic 3 color
pattern version,
allow yourself some
creative fun as Leslie
has done with these.

Fabrics by P&B Textiles

A New Twist on Tumbling Blocks

One simple technique, so many great looks...

open a world of design possibilities with Leslie Tallaksen's new take on an old favorite.

Designed by
LESLIE TALLAKSEN

Machine Quilted by
LORRE FLEMING

Finished Quilt Size
45½" x 50"

Note: See Pattern Pull-Out Section for template and foundation masters. Foundations are meant to be traced or photocopied.

Number of Foundation Pieced Units & Finished Size

65 Unit A 3" x 6" • 5 Unit B 3" x 3"
5 Unit C 3" x 3" • 7 Unit D 1½" x 6"

Fabric Requirements

Blue texture (pieced units, border, binding)	2½ yds.
Orange texture and cream texture (pieced units, filler strips, border)	2 yds. each
Backing (piece widthwise)	3½ yds.
Batting	Twin size

Other Materials

Sewing thread
Machine quilting thread

Planning, Cutting, and Marking

Leslie's innovative technique for constructing the traditional Tumbling Blocks pattern eliminates set-in seams by using foundation (paper) piecing. See Leslie's Step-By-Step Foundation Piecing Tips on pages 69 & 70.



Cutting Instructions

Blue texture

- *2 strips $1\frac{3}{4}$ " x width of fabric (WOF)
- *1 strip $2\frac{1}{2}$ " x WOF
- 65 rectangles $3\frac{1}{2}$ " x $6\frac{1}{2}$ "
- 10 squares $3\frac{1}{2}$ " x $3\frac{1}{2}$ "
- 7 strips 2 " x $6\frac{1}{2}$ "

Cream texture

- *4 strips 4 " x WOF
- *2 strips $1\frac{3}{4}$ " x WOF
- *1 strip $2\frac{1}{2}$ " x WOF
- 147 Template A
- 5 rectangles $2\frac{1}{4}$ " x 4 "

Orange texture

- *4 strips 4 " x WOF
- *2 strips $1\frac{3}{4}$ " x WOF
- *1 strip $2\frac{1}{2}$ " x WOF
- 147 Template A reverse (AR)
- 5 rectangles $2\frac{1}{4}$ " x 4 "

*Cut first.

Piecing the Units and Borders

1 Read Leslie's Step-By-Step Foundation Piecing Tips (this page) in preparation for making foundation pieced units. Make 65 copies of Foundation Master A, 5 copies **each** of Foundation Masters B and C, and 7 copies of Foundation Master D. Foundation piece all units (see Diagram I for color placement).

2 Sew cream and orange 4 " x WOF strips together (Diagram II-A). Make 4. Press seams open. Cut into 65 segments $2\frac{1}{4}$ " wide. Sew segment to bottom of foundation pieced unit A (Diagram II-B). Press open; trim sides even with trimmed sides of unit A, and trim bottom to measure $1\frac{3}{4}$ " from seam to raw edge. Repeat for each unit A.

3 Referring to Diagram III, sew orange $2\frac{1}{4}$ " x 4 " rectangle to bottom of each unit B, press open, and trim as in Step 2. Sew cream $2\frac{1}{4}$ " x 4 " rectangle to bottom of each unit C, press and trim.

4 Remove all foundation papers.

5 Referring to Diagram IV, stitch cream, orange and blue $1\frac{3}{4}$ " x WOF strips together. Make 2. Press seams in direction of arrow. Cut 38 segments 2 " wide. Repeat process using cream, orange and blue $2\frac{1}{2}$ " x WOF strips. Cut 18 segments 2 " wide.

6 Randomly arranging narrow strip segments and wide strip segments, sew strip segments together end to end to make 2 " x 52 " pieced border strip. Make 4.



Unit A-Make 65

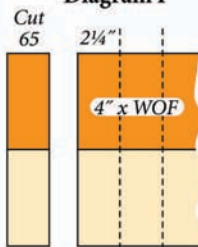


Unit B-Make 5 Unit C-Make 5



Unit D-Make 7

Diagram I



Make 4

Diagram II-A

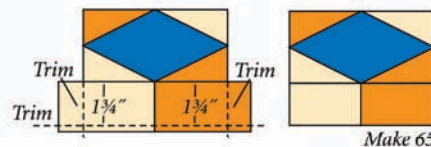


Diagram II-B



Make 5 Make 5

Diagram III

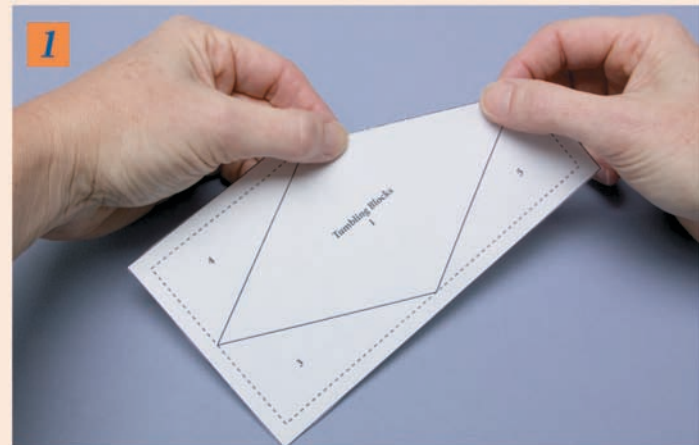
Leslie's Step-By-Step Foundation Piecing Tips

1. Copy Foundation Masters in quantities indicated. Cut out foundations and fold corners back on diagonal lines (photo 1). **Refold** on diagonal line with corner to the **front**.

2. Pin #1 fabric to non-printed side of foundation, right side out, keeping pins away from folds. Line up ruler $\frac{1}{4}$ " beyond fold (photo 2); cut, leaving $\frac{1}{4}$ " seam allowance. Trim all diagonal corners of fabric.

3. Place #2 fabric (Template A) on trimmed edge of #1 fabric, right sides together (photo 3).

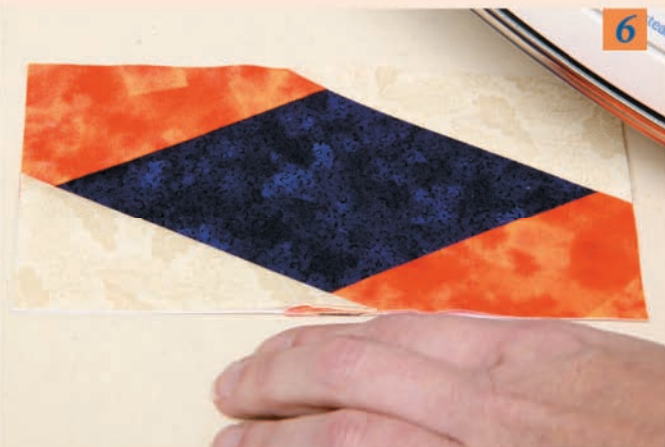
(Continued on next page)



Leslie's Step-By-Step Foundation Piecing Tips

(continued)

4. Turn foundation corner back up to printed side and sew on the line (photo 4). Open fabric layer and press with dry iron (photo 5). Repeat for all diagonal lines, using fabric colors indicated. **Note:** Remember the fabric will reverse positions when template is flipped over. Be sure to pin and flip to check for correct placement of fabric. Trim edges even with foundation outer solid line and press (photo 6).



Quilt Top Assembly

Note: Refer to Assembly Diagram for following steps.

- 7** Arrange and sew 11 rows, carefully following layout of pieced units. Sew rows together.
- 8** Sew pieced border strips to sides of quilt; trim even with top and bottom. Sew remaining pieced border strips to top and bottom of quilt; trim even with sides.

Quilting and Finishing

9 Layer and baste quilt top for quilting method of your choice (see Basic Quiltmaking Instructions). Lorre machine quilted in copper metallic thread, creating an intersecting pattern of ovals across the quilt center which emphasizes the Tumbling Block pattern and distracts the eye from the foundation piecing seams. She filled the border with a continuous loop design.

10 Bind quilt with blue texture fabric (see Basic Quiltmaking Instructions).

Further Information

Leslie Tallaksen will be offering patterns for additional original tumbling blocks designs on her website, www.countryneedleworks.com, beginning in April, 2005.

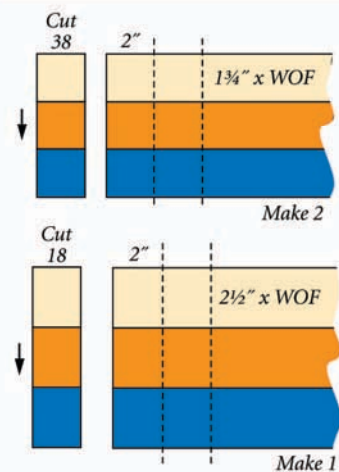
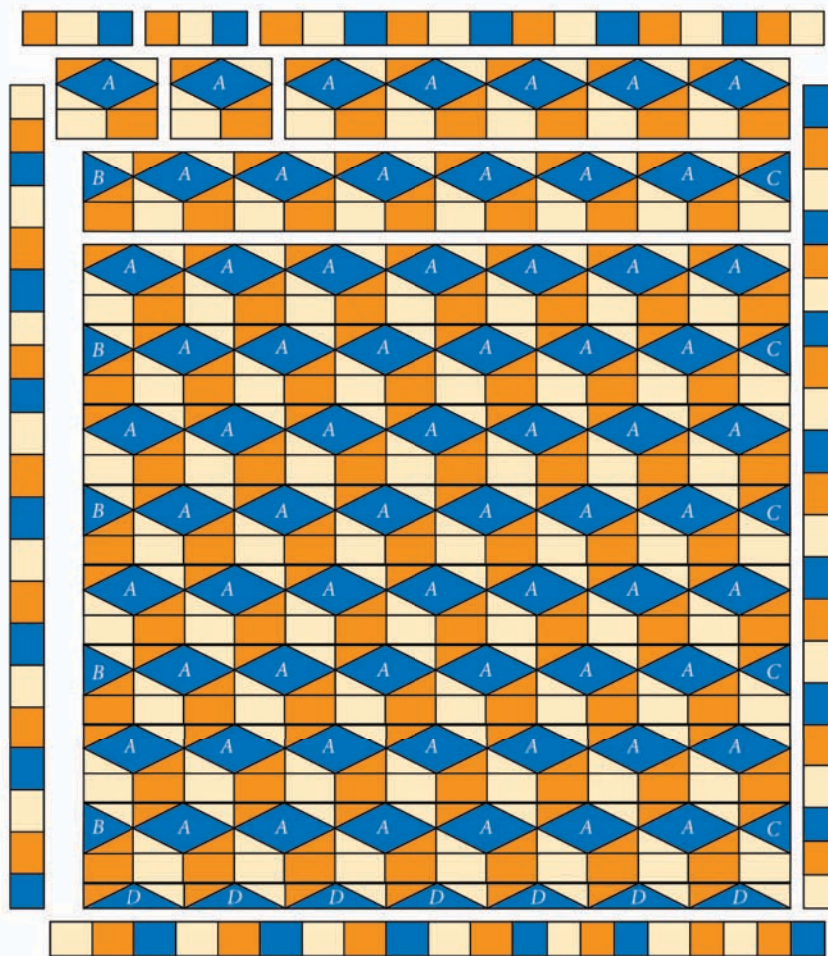
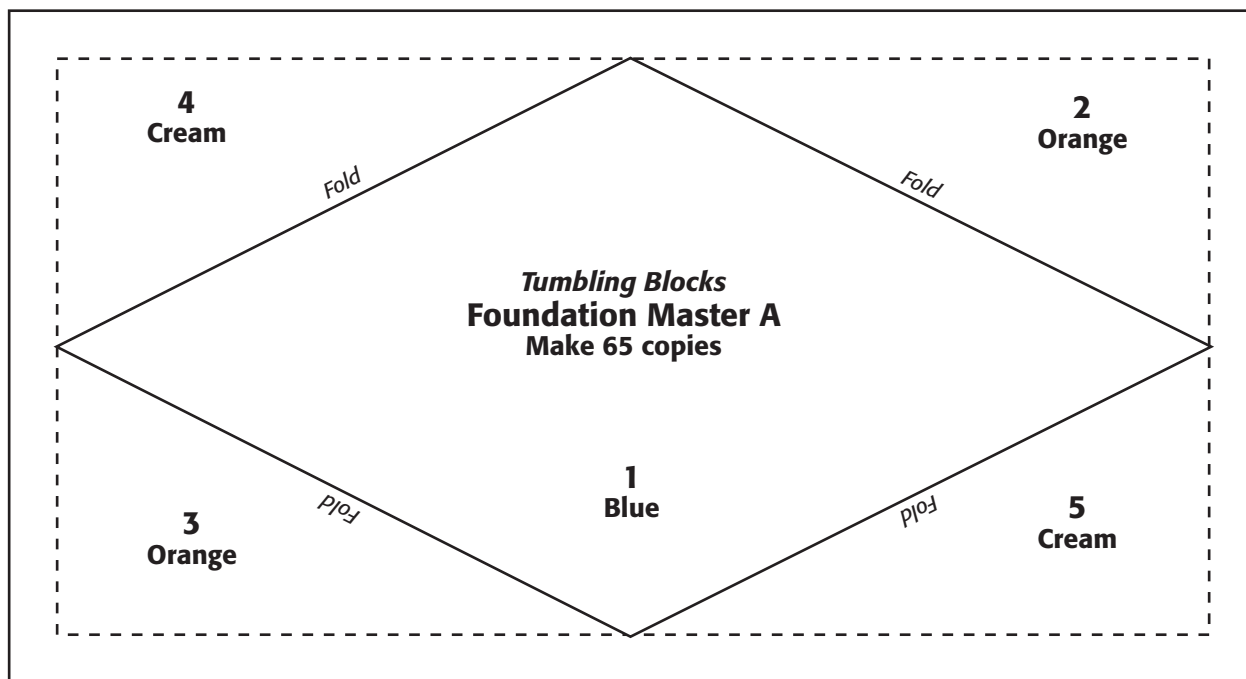


Diagram IV



Assembly Diagram

A NEW TWIST ON TUMBLING BLOCKS



Reader has permission to photocopy these foundations for personal use

