

# Start Quilting

## Cutting and assembly diagrams

Cutting instructions and the assembly diagram for the blocks in *Start Quilting* are provided here.

Read about using quilting motifs as a springboard for improvising your quilting in *Start Quilting* Mar/Apr '14 (No. 156). If you cannot find this issue at your local quilt shop, order back issues at [shopquiltmaker.com](http://shopquiltmaker.com).

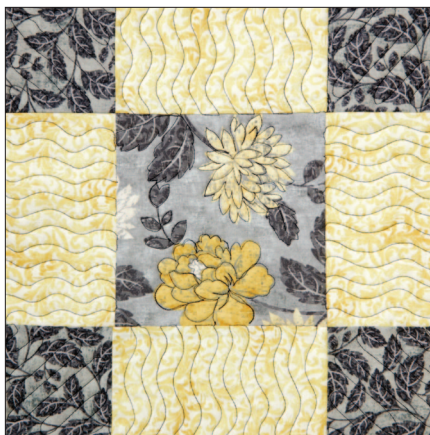
Follow the instructions here to make each block.

**Nine Patch variation:** Sew the patches together as shown to make the block.

**Turnabout Variation:** Sew the patches together as shown to make unit 1's–4's. Refer to the trimming diagram to trim the units.

Sew the units together as shown to make the block.

**Patience Corners:** Sew the patches together as shown to make the block.



12" x 12"

Fabric: *Ophelia* from *Timeless Treasures*.

For *each* block:

**Gray Print #1**

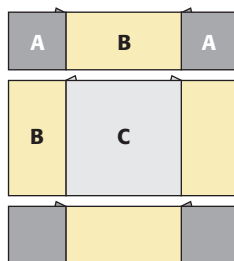
4 squares (A)  $3\frac{1}{2}$ " x  $3\frac{1}{2}$ "

**Yellow Print**

4 rectangles (B)  $3\frac{1}{2}$ " x  $6\frac{1}{2}$ "

**Gray Print #2**

1 square (C)  $6\frac{1}{2}$ " x  $6\frac{1}{2}$ "



Block Assembly



12" x 12"

Fabric: *Textura*, *Scratch Texture* and *Always Blooming* by Susy Pilgrim Waters, all from P&B Textiles.

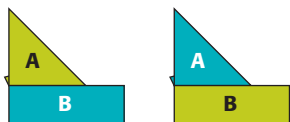
For *each* block:

**Green Tone-on-Tone, Teal Tone-on-Tone #’s 1, 2 and 3**

from *each*:

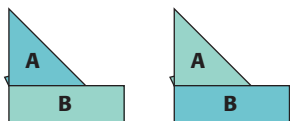
1 square  $4\frac{7}{8}" \times 4\frac{7}{8}"$  cut diagonally  
to yield 2 triangles (A)

2 rectangles (B)  $2\frac{1}{2}" \times 6\frac{1}{2}"$



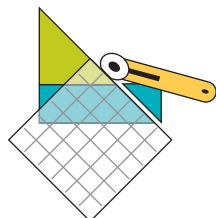
**Unit 1**  
Make 2

**Unit 2**  
Make 2

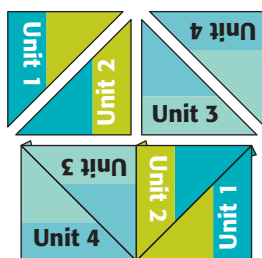


**Unit 3**  
Make 2

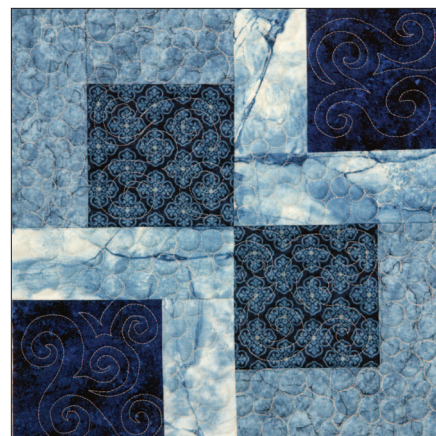
**Unit 4**  
Make 2



**Trimming Diagram**



**Block Assembly**



12" x 12"

Fabric: *Stonehenge* by Linda Ludovico and *Stonehenge Aphrodite* by Deborah Edwards, both for Northcott.

For *each* block:

**Dark Blue Tone-on-Tone #’s 1 and 2**  
from *each*:

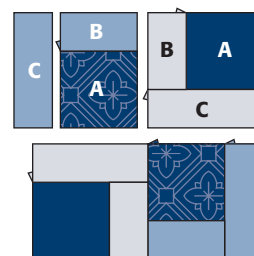
2 squares (A)  $4\frac{1}{2}" \times 4\frac{1}{2}"$

**Medium Blue Tone-on-Tone #’s 1 and 2**

from *each*:

2 rectangles (B)  $2\frac{1}{2}" \times 4\frac{1}{2}"$

2 rectangles (C)  $2\frac{1}{2}" \times 6\frac{1}{2}"$



**Block Assembly**